

Supplement 2: supplementary figures

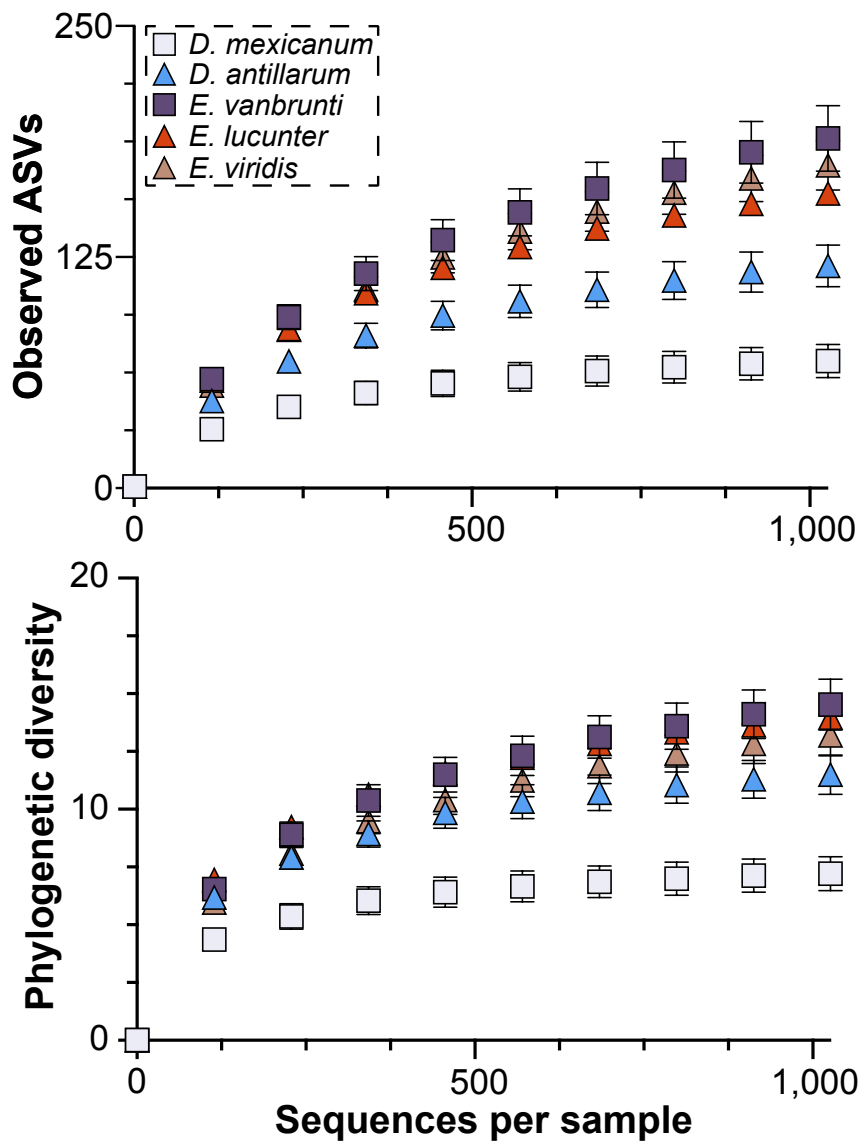


Fig. S1: Alpha rarefaction curve for *Diadema* and *Echinometra* species. Alpha rarefaction curve for the bacterial community associated with *D. mexicanum*, *D. antillarum*, *E. vanbrunti*, *E. lucunter*, and *E. viridis* eggs. This was based on a rarefaction depth of 1,027 sequences and was used for all analyses.

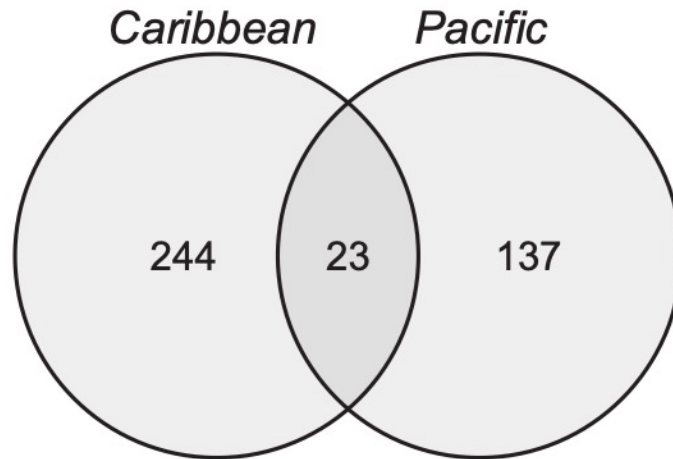


Fig. S2: Taxonomic differences between the egg microbiota of *Echinometra* geminate species. Differences in the taxonomic representation for *Echinometra* species from the Caribbean (*E. lucunter* and *E. viridis* together) and the Pacific (*E. vanbrunti*).