

*The following supplement accompanies the article*

## **Changes in meteorological variables that can trigger natural hazards in Norway**

**Anita Verpe Dyrørdal<sup>1,\*</sup>, Ketil Isaksen<sup>1</sup>, Hans Olav Hygen<sup>1</sup>, Nele Kristin Meyer<sup>2,3</sup>**

<sup>1</sup>The Norwegian Meteorological Institute (met.no), PO Box 43 Blindern, 0313 Oslo, Norway

<sup>2</sup>International Centre for Geohazards (ICG), c/o PO Box 3930 Ullevål Stadion, 0806 Oslo, Norway

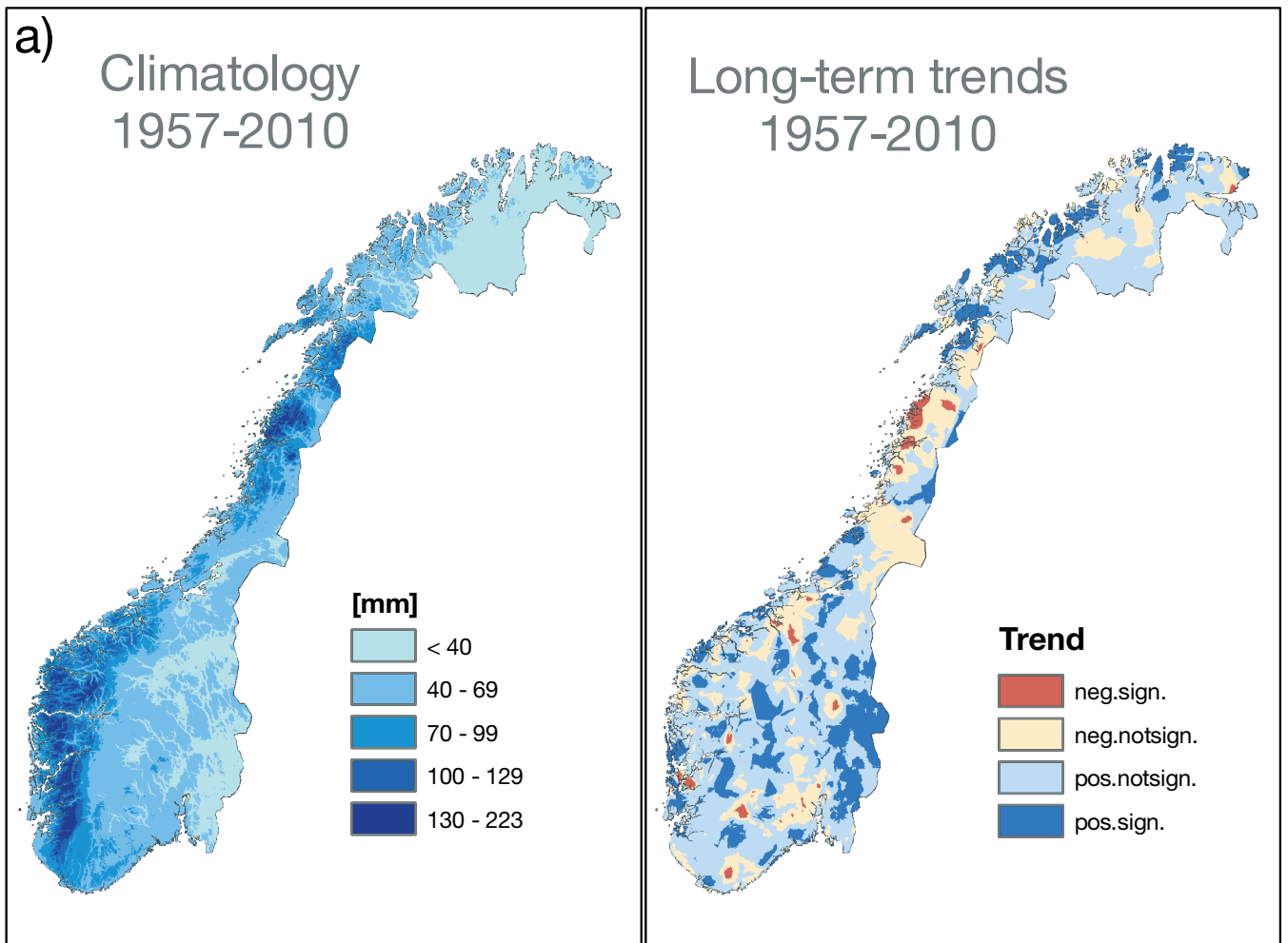
<sup>3</sup>Department of Geosciences, University of Oslo (UiO), PO Box 1047 Blindern, 0316 Oslo, Norway

\*Email: anitavd@met.no

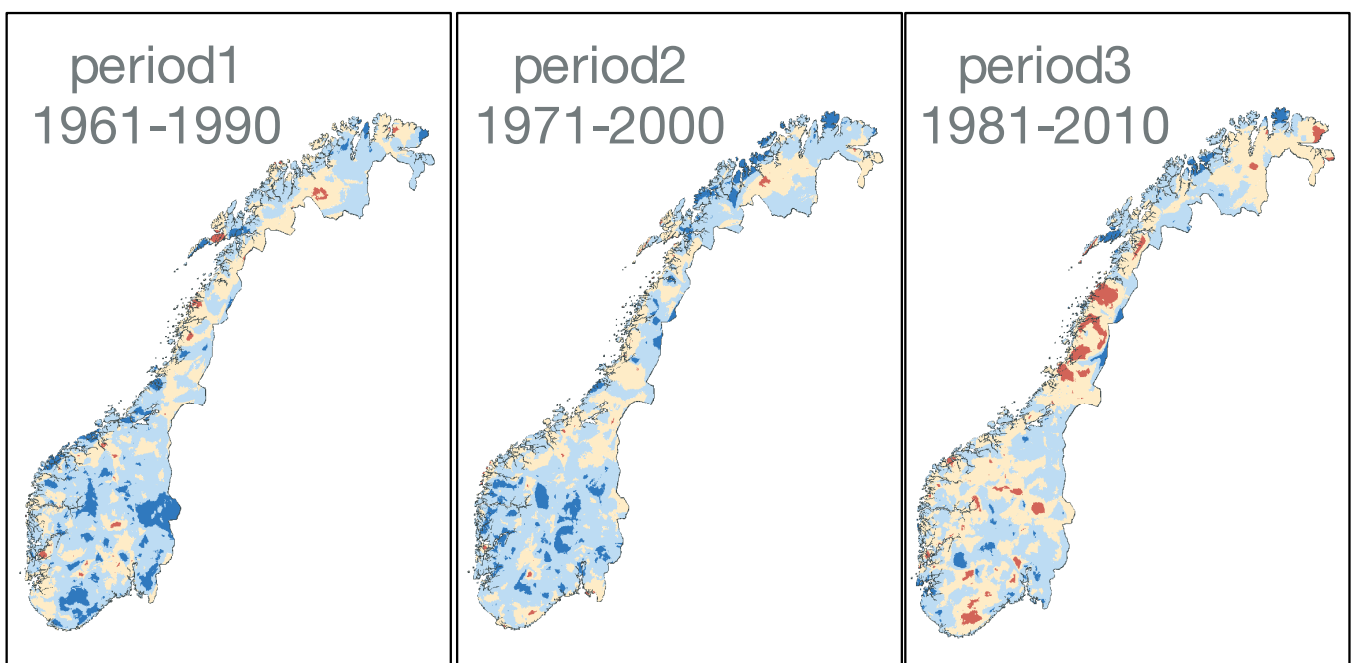
*Climate Research: 55: 153–165 (2012)*

**Supplement.** Results for precipitation, snow, and near-zero events

# Annual maximum 1-day precipitation



## Short-term trends



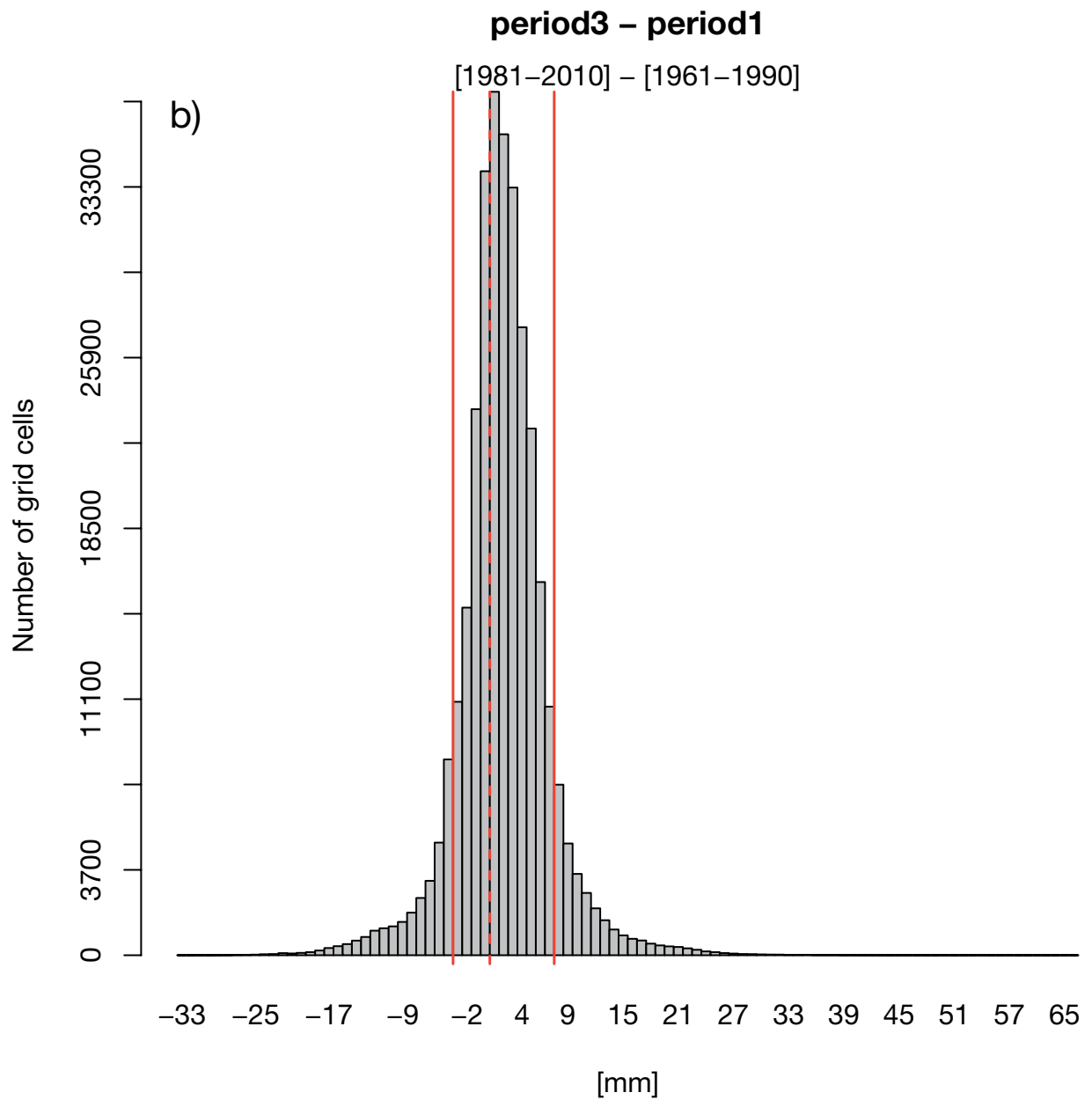
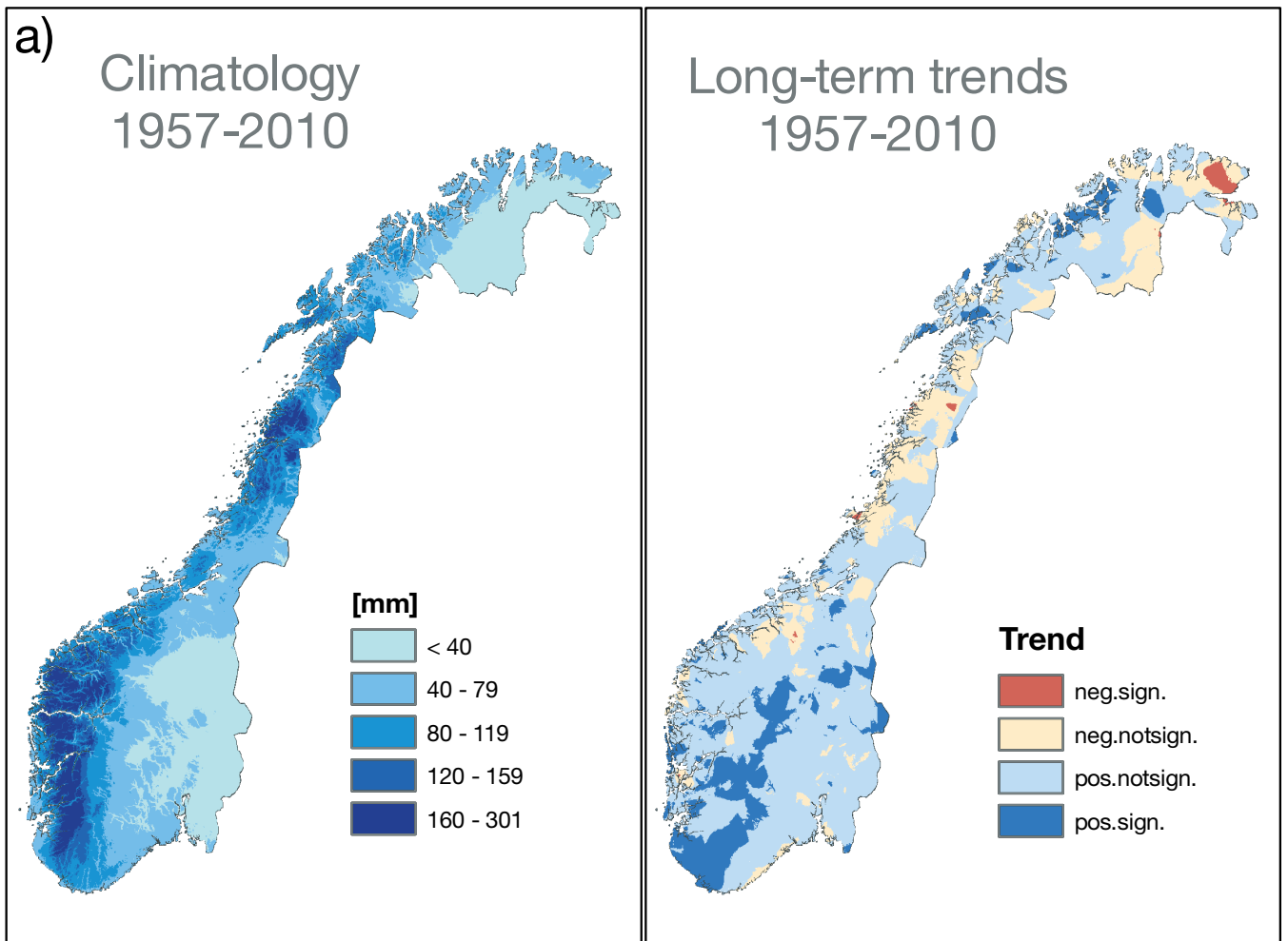
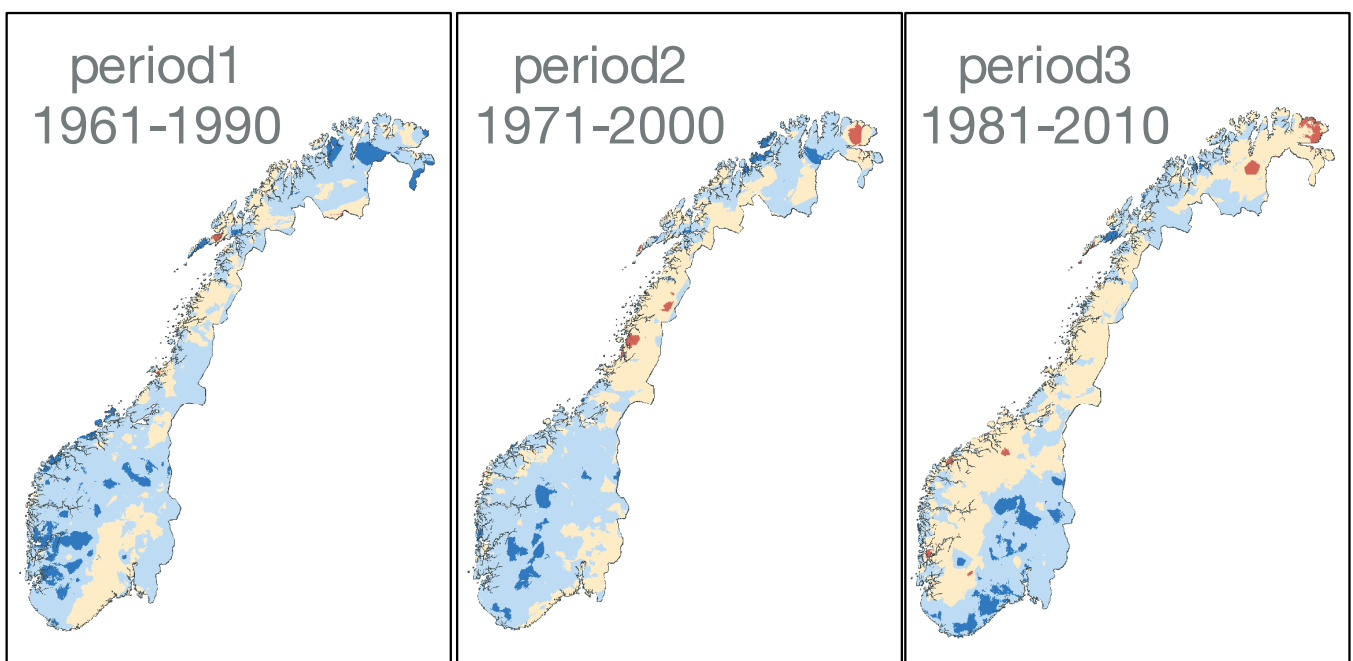


Fig. S1. Annual maximum 1 d precipitation. (a) Climatology and temporal trends (neg.: negative; pos.: positive; sign.: significant; notsign.: not significant). (b) Changes between Period 1 and Period 3 (red solid lines: 10th and the 90th percentiles; red dashed line: zero change)

# Annual maximum 5-day precipitation



## Short-term trends



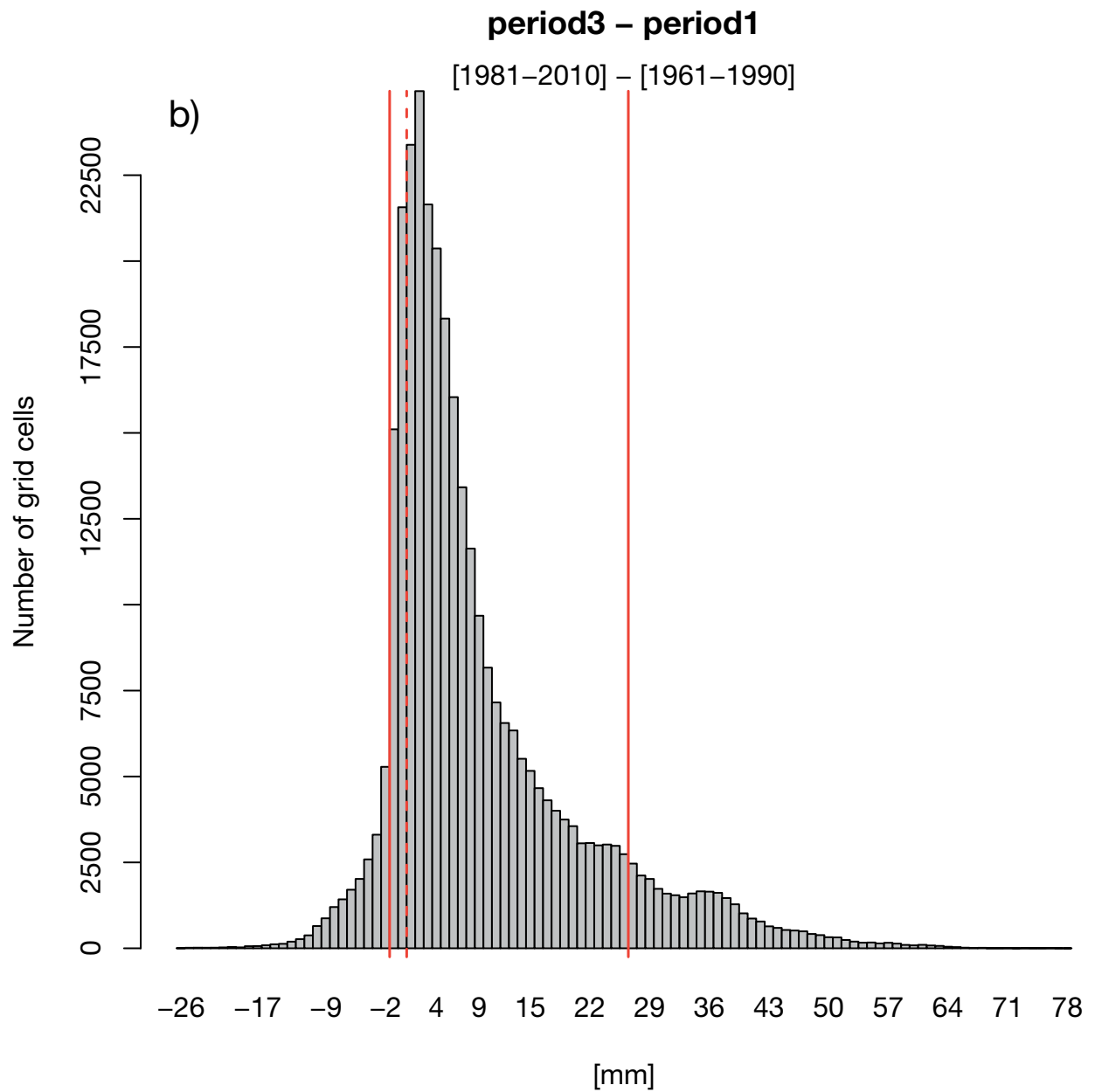
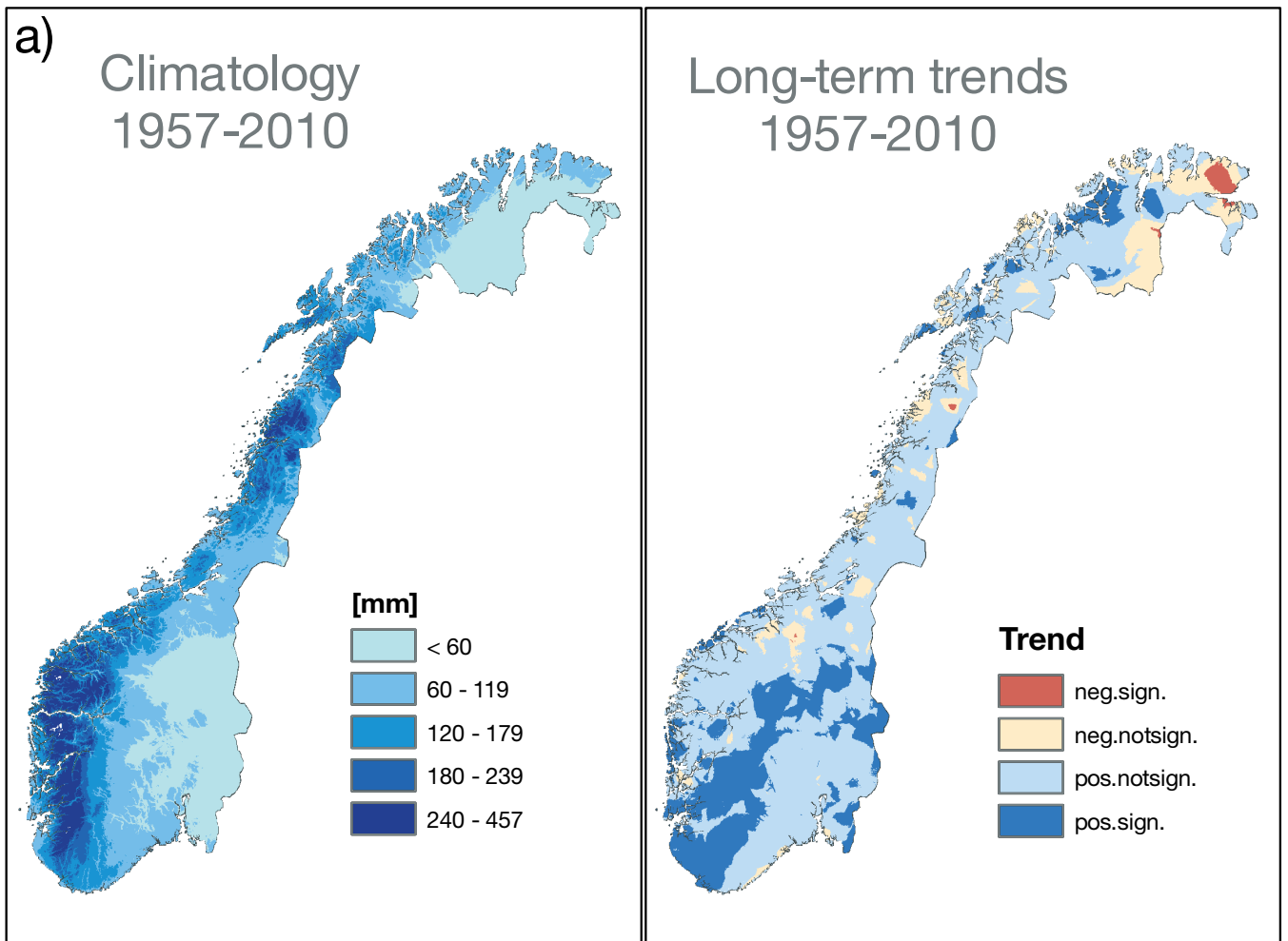
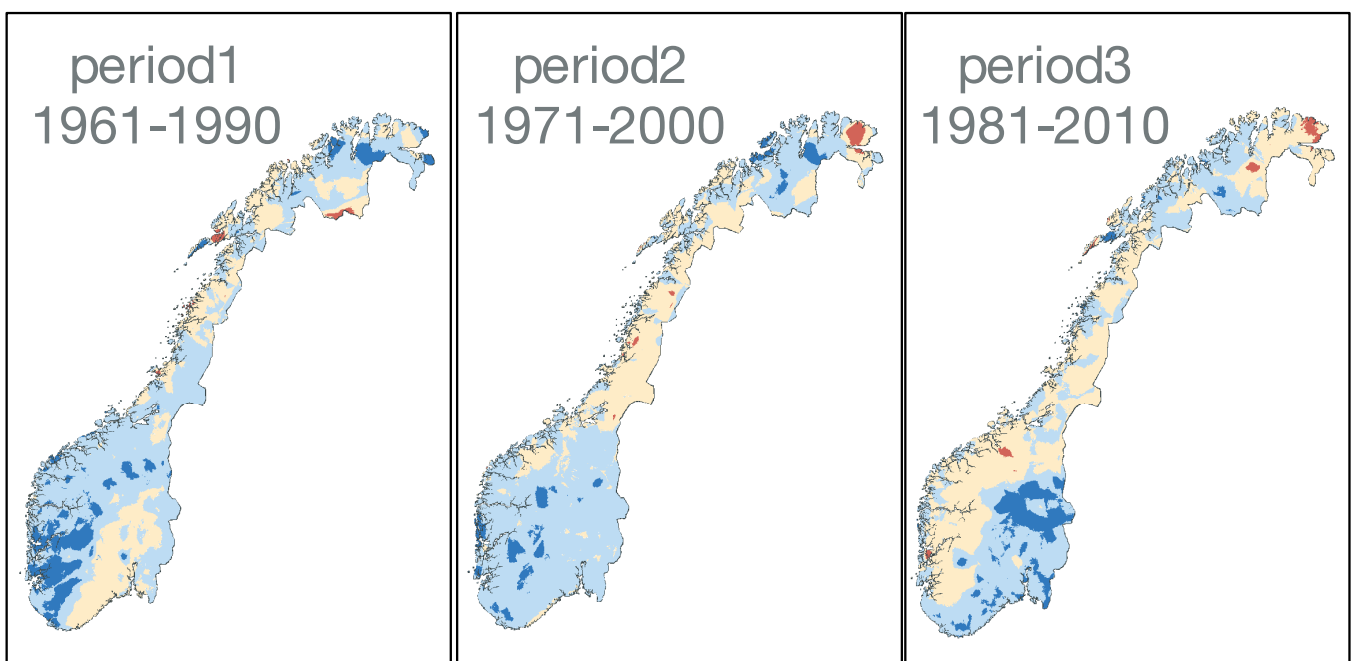


Fig. S2. Annual maximum 5 d precipitation. (a) Climatology and temporal trends (neg.: negative; pos.: positive; sign.: significant; notsign.: not significant). (b) Changes between Period 1 and Period 3 (red solid lines: 10th and the 90th percentiles; red dashed line: zero change)

# Annual maximum 10-day precipitation



## Short-term trends



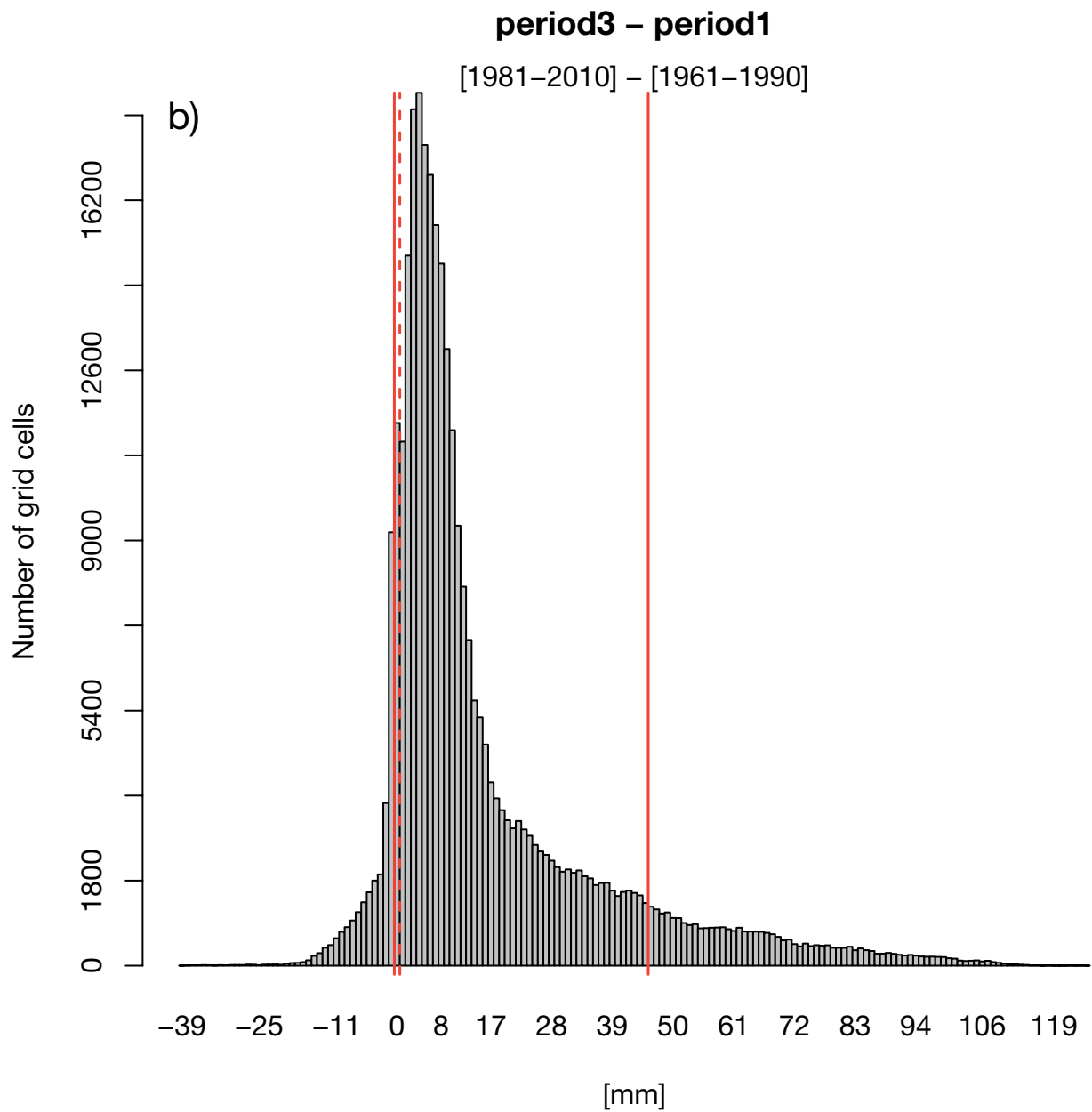
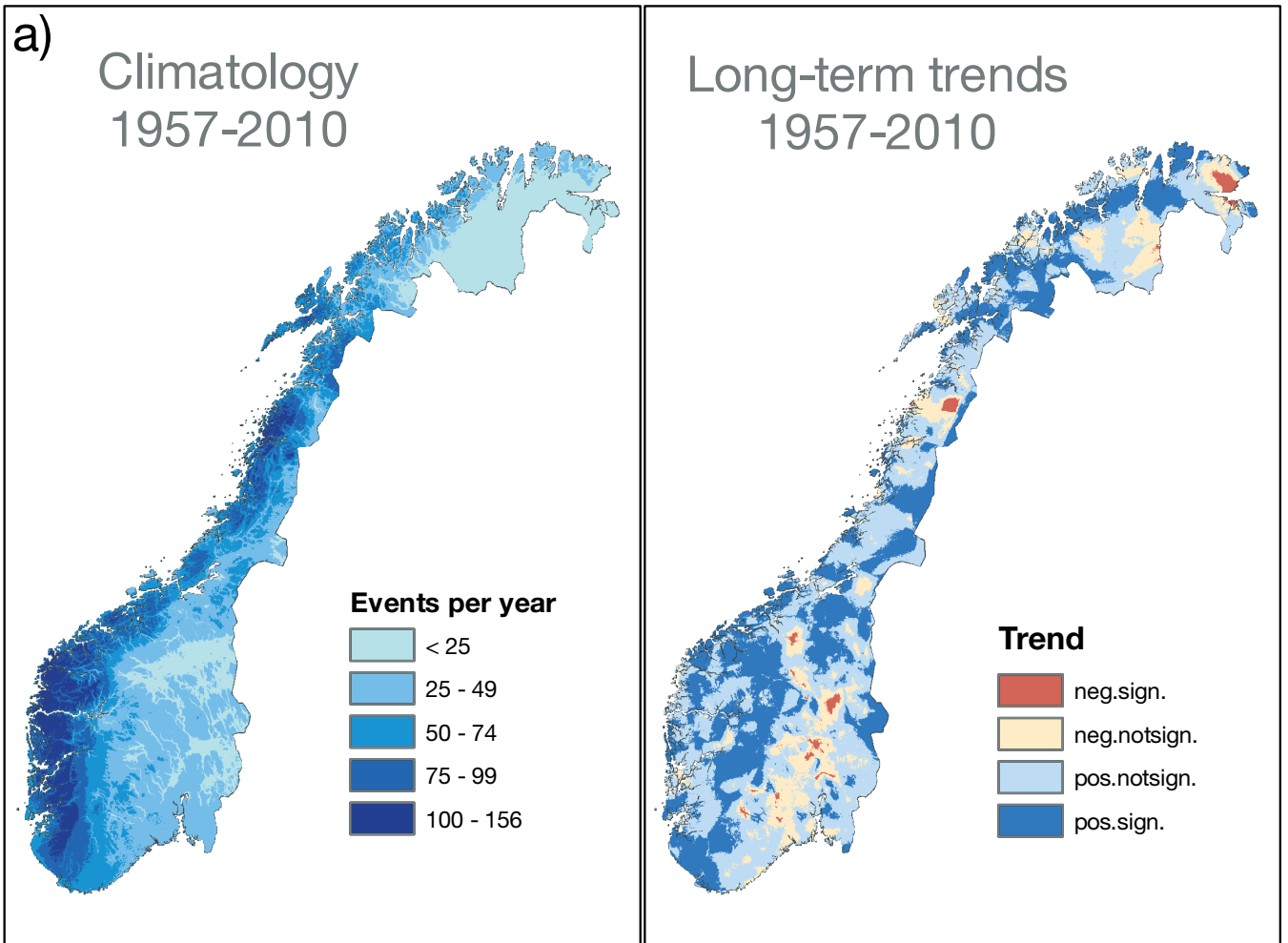
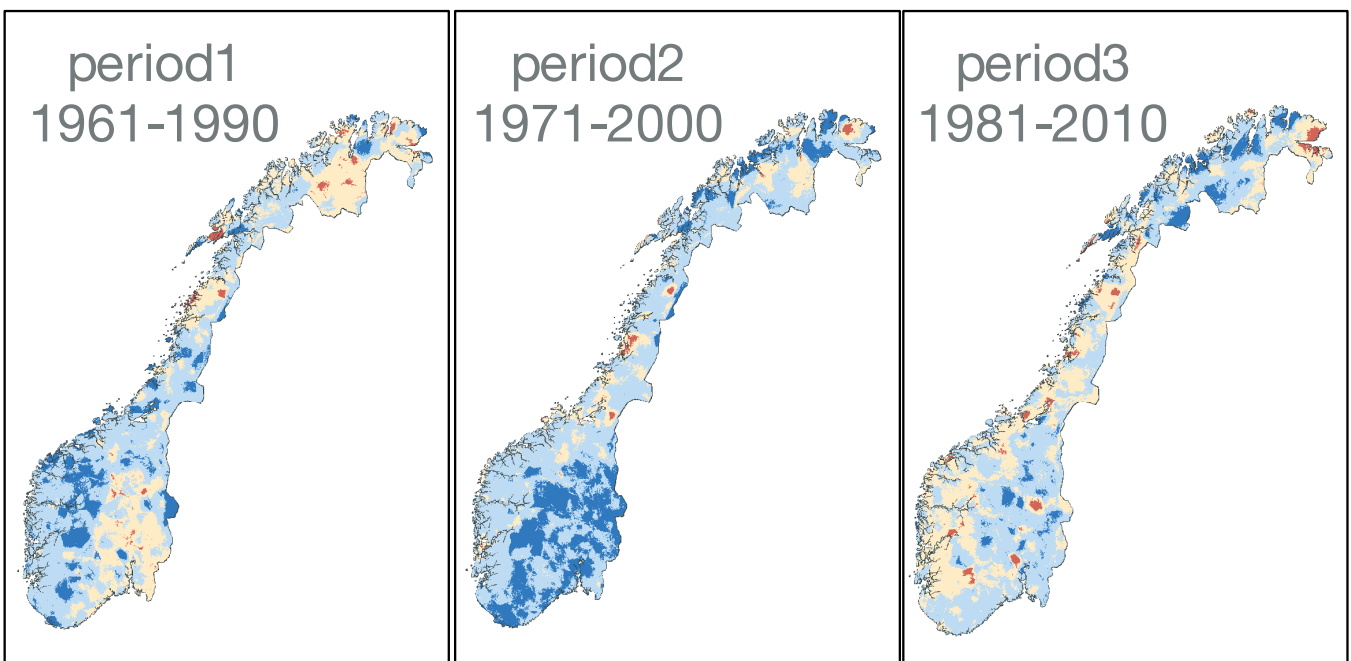


Fig. S3. Annual maximum 10 d precipitation. (a) Climatology and temporal trends (neg.: negative; pos.: positive; sign.: significant; notsign.: not significant). (b) Changes between Period 1 and Period 3 (red solid lines: 10th and the 90th percentiles; red dashed line: zero change)

# 1-day precipitation exceeding 10 mm



## Short-term trends





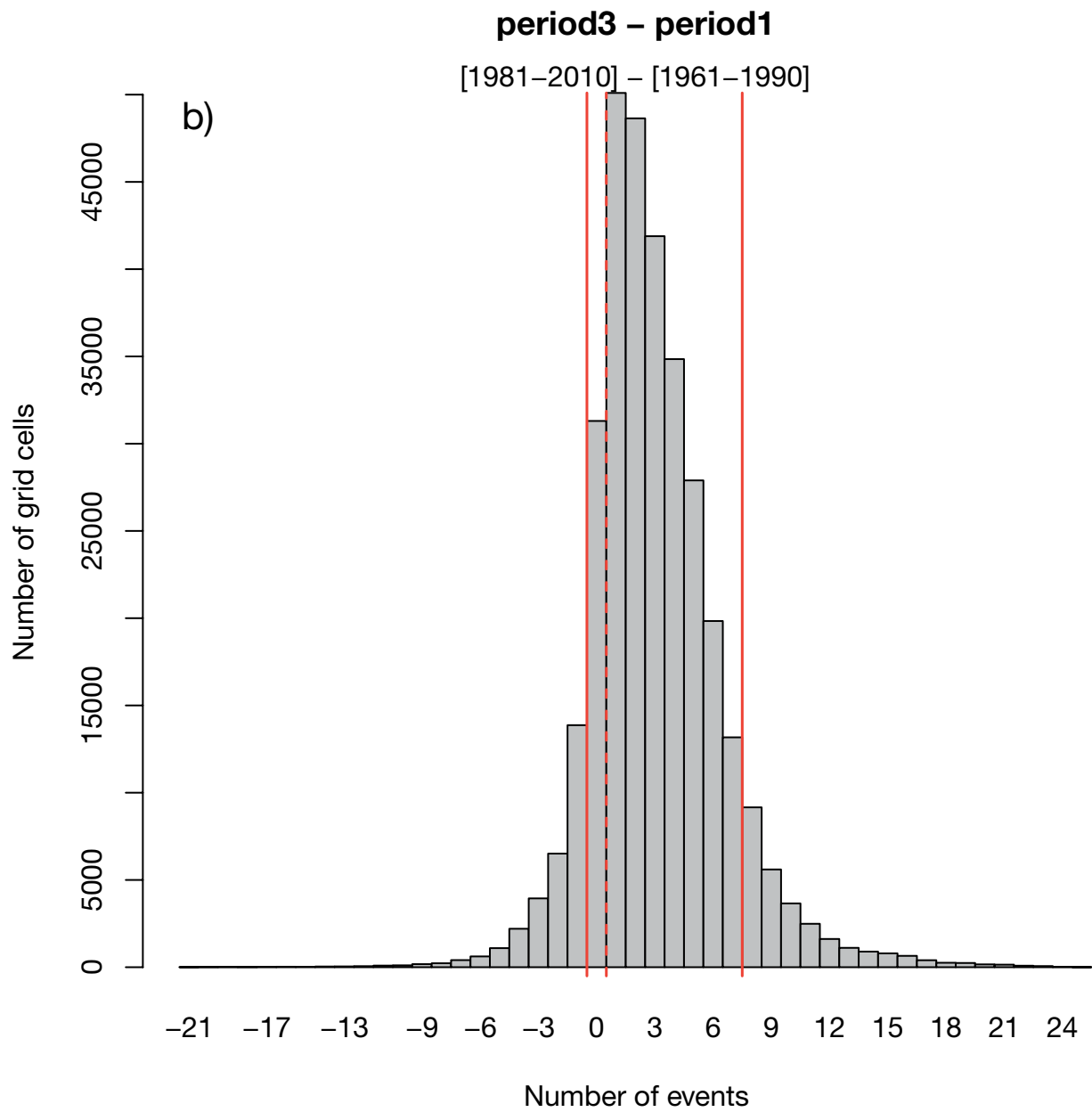
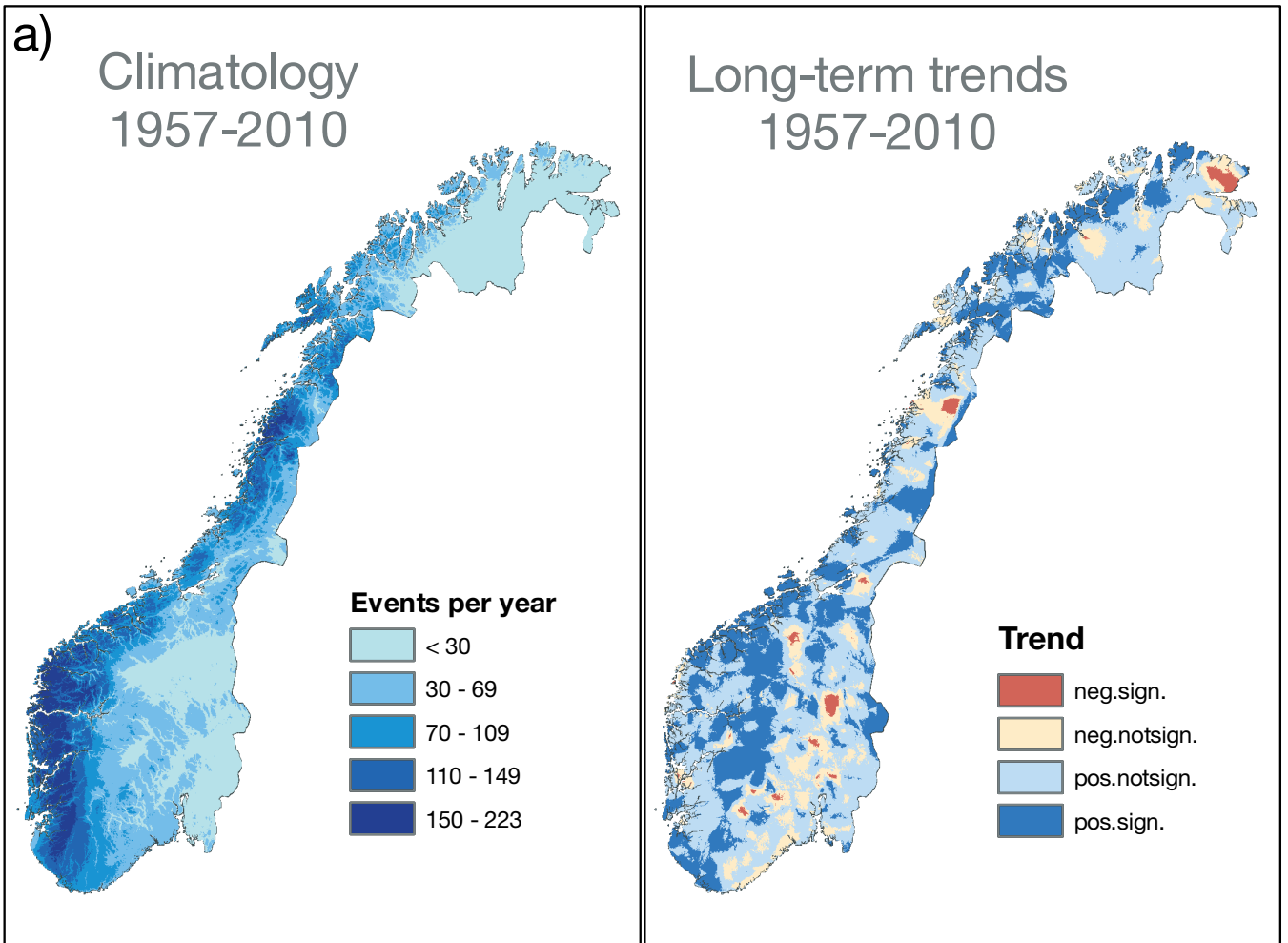
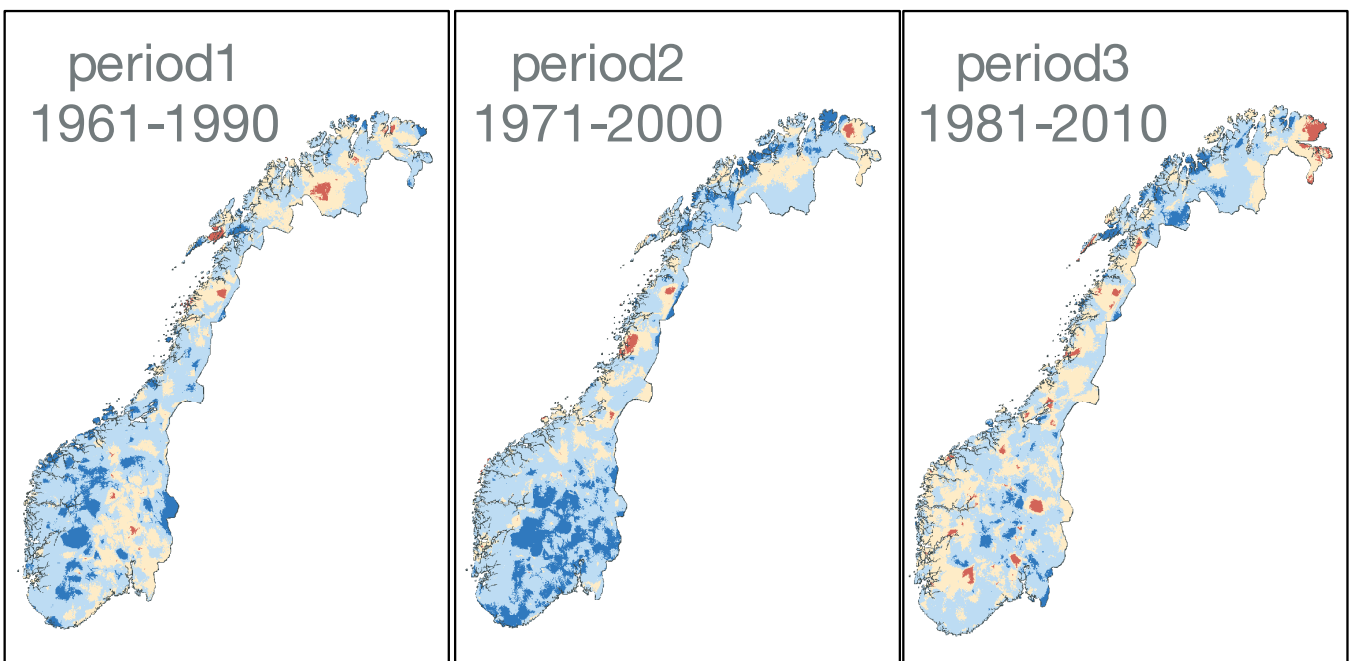


Fig. S4. Number of 1 d precipitation events exceeding 10 mm. (a) Climatology and temporal trends (neg.: negative; pos.: positive; sign.: significant; notsign.: not significant). (b) Changes between Period 1 and Period 3 (red solid lines: 10th and the 90th percentiles; red dashed line: zero change)

# 5-day precipitation exceeding 40 mm



## Short-term trends



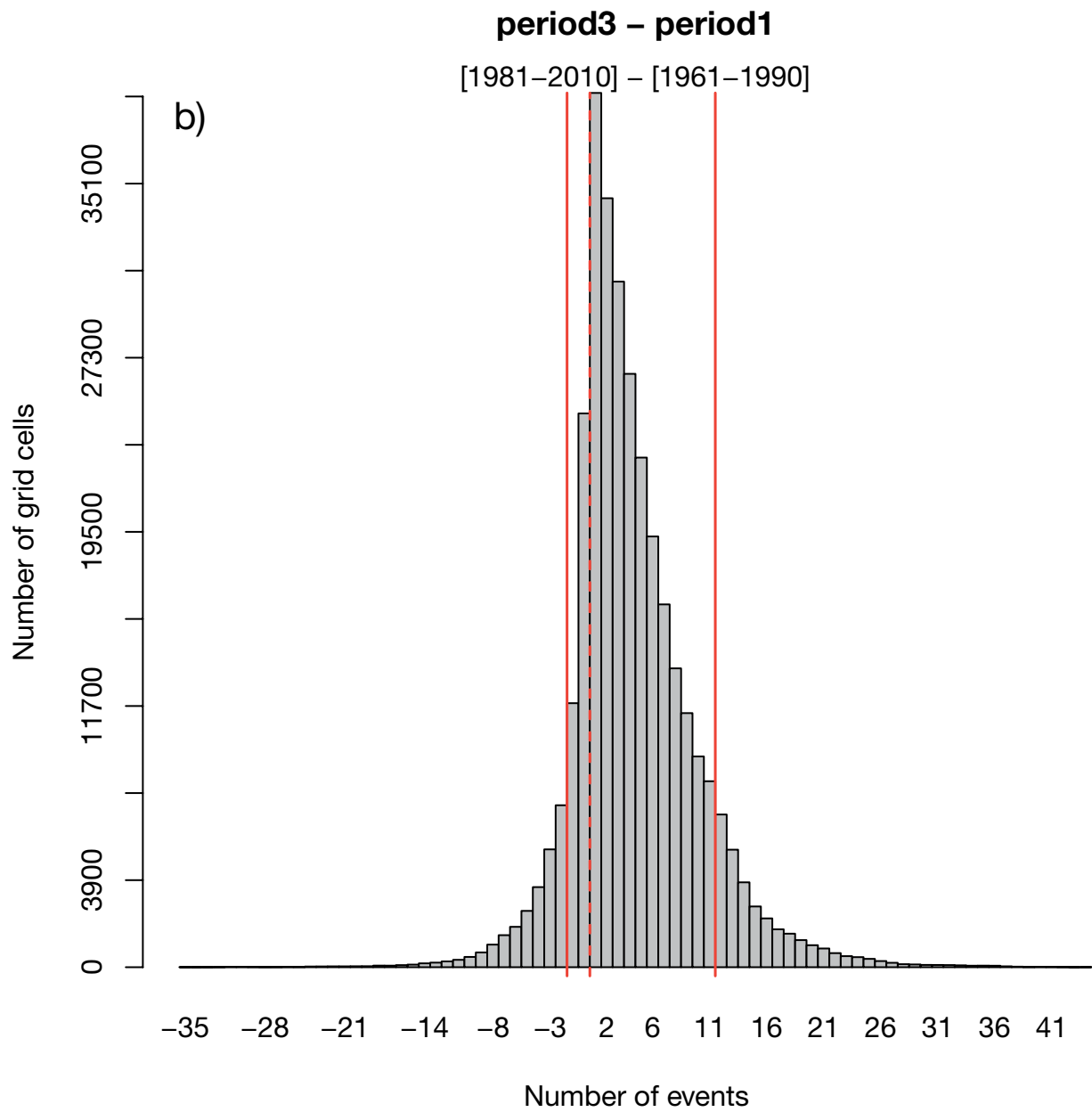
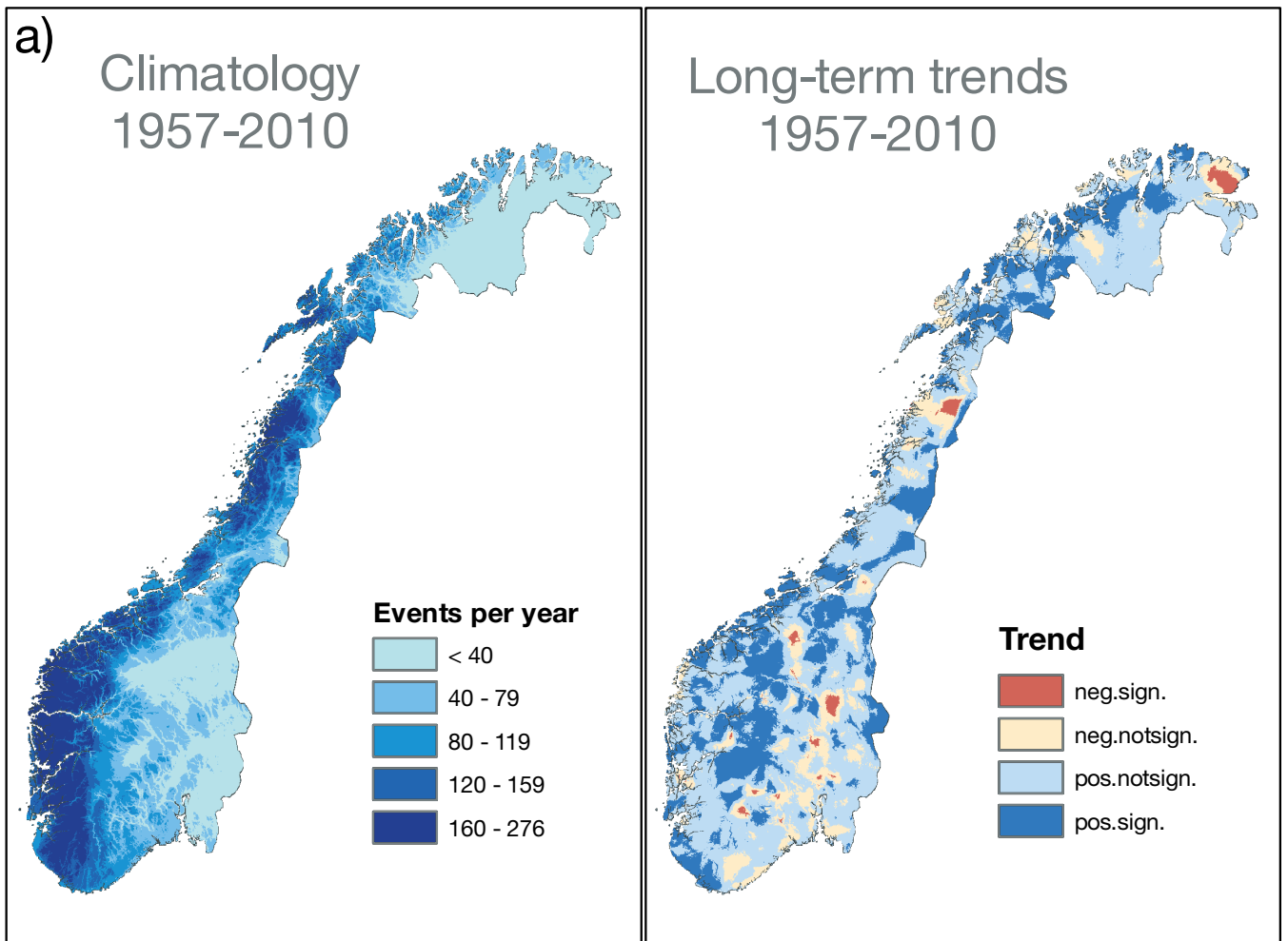
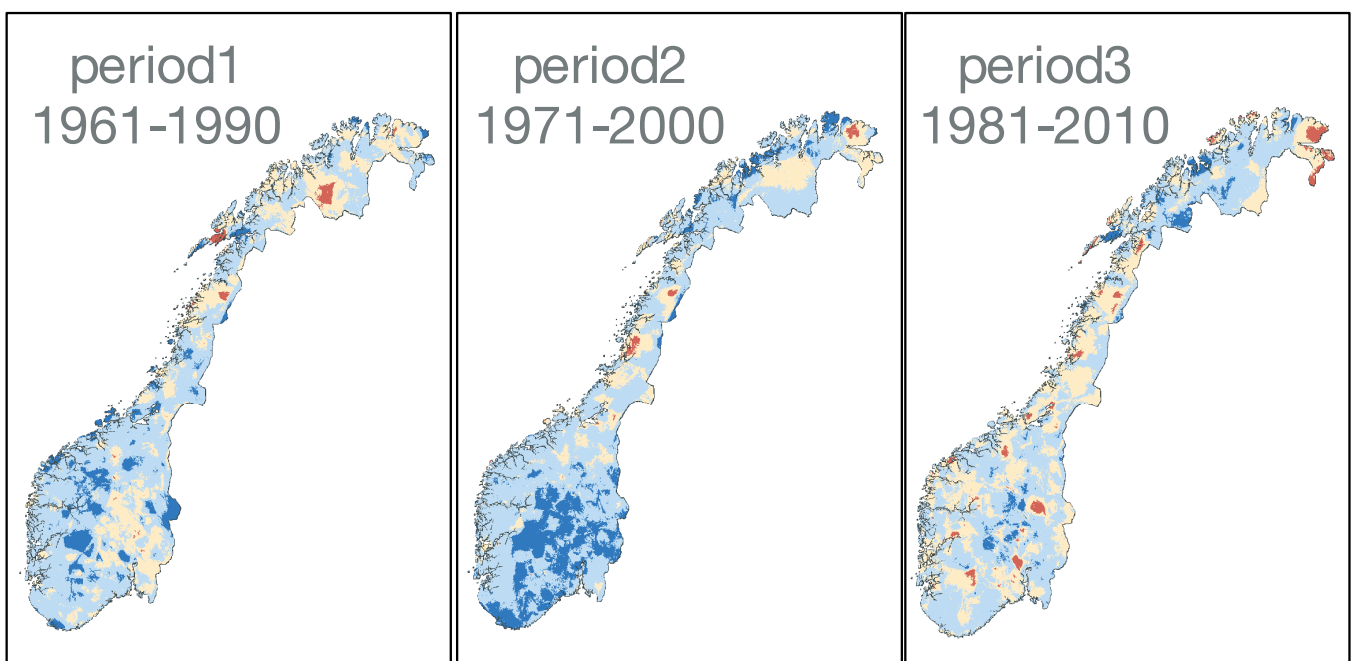


Fig. S5. Number of 5 d precipitation events exceeding 40 mm. (a) Climatology and temporal trends (neg.: negative; pos.: positive; sign.: significant; notsign.: not significant). (b) Changes between Period 1 and Period 3 (red solid lines: 10th and the 90th percentiles; red dashed line: zero change)

# 10-day precipitation exceeding 60 mm



## Short-term trends



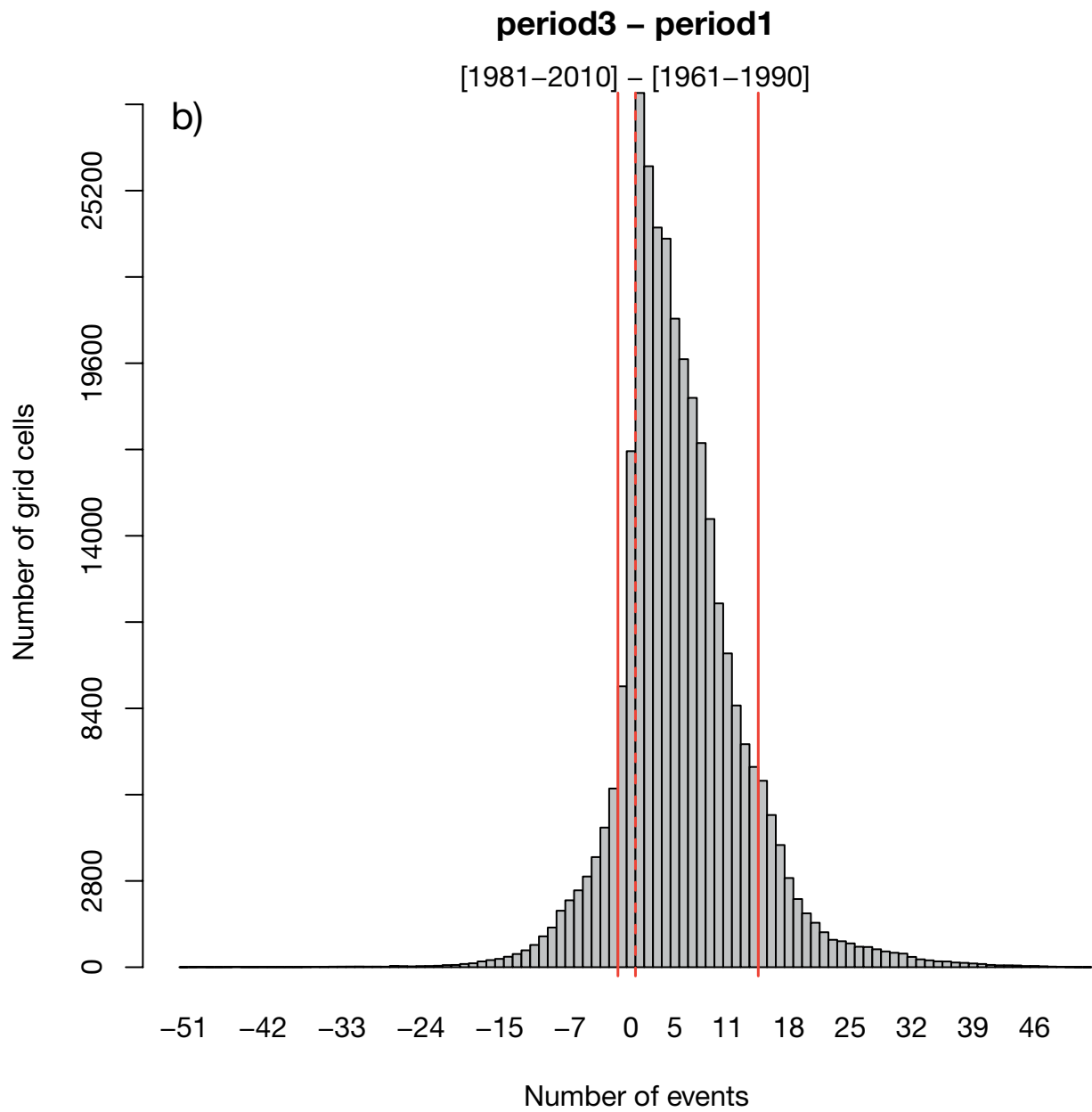
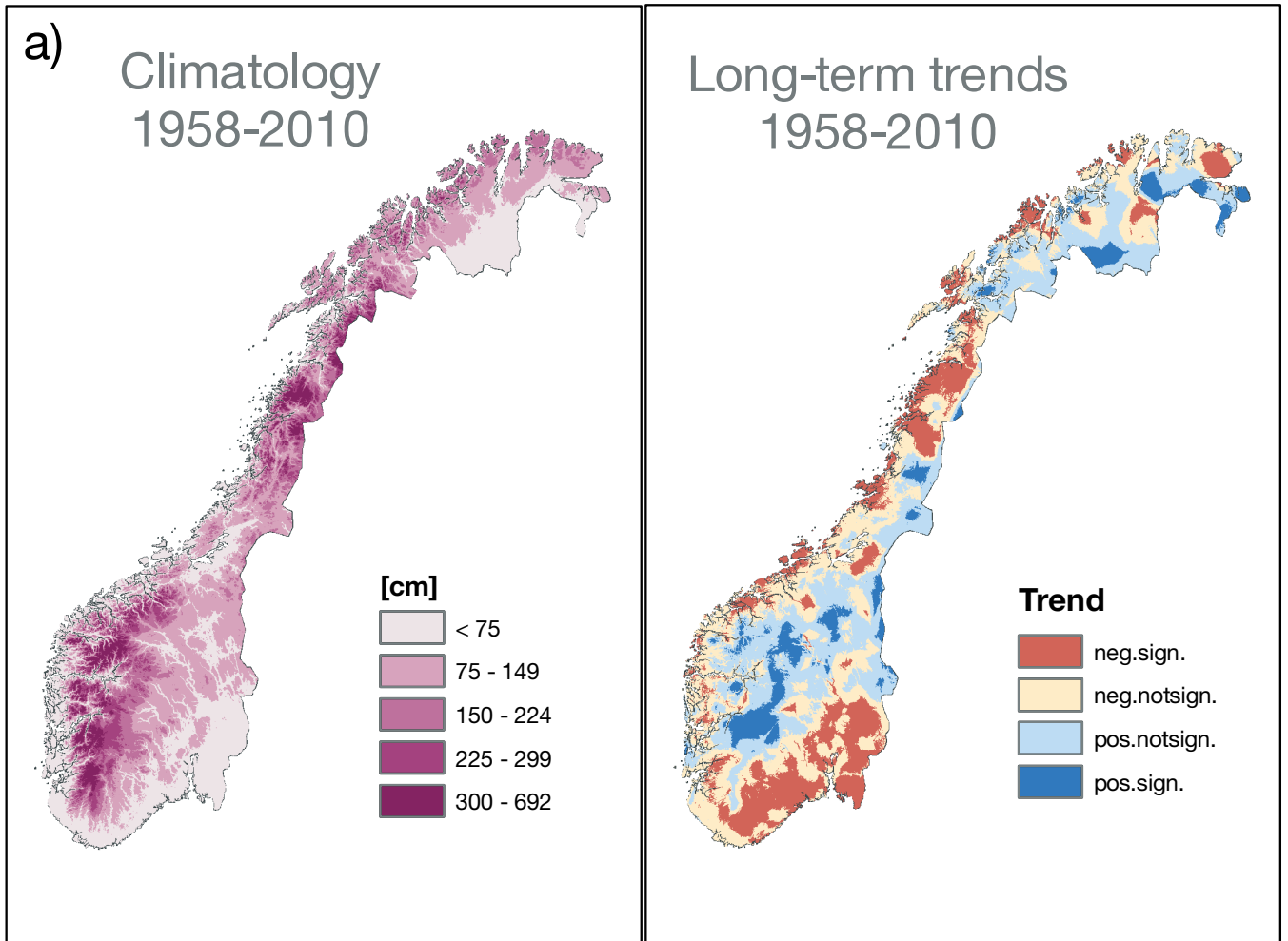
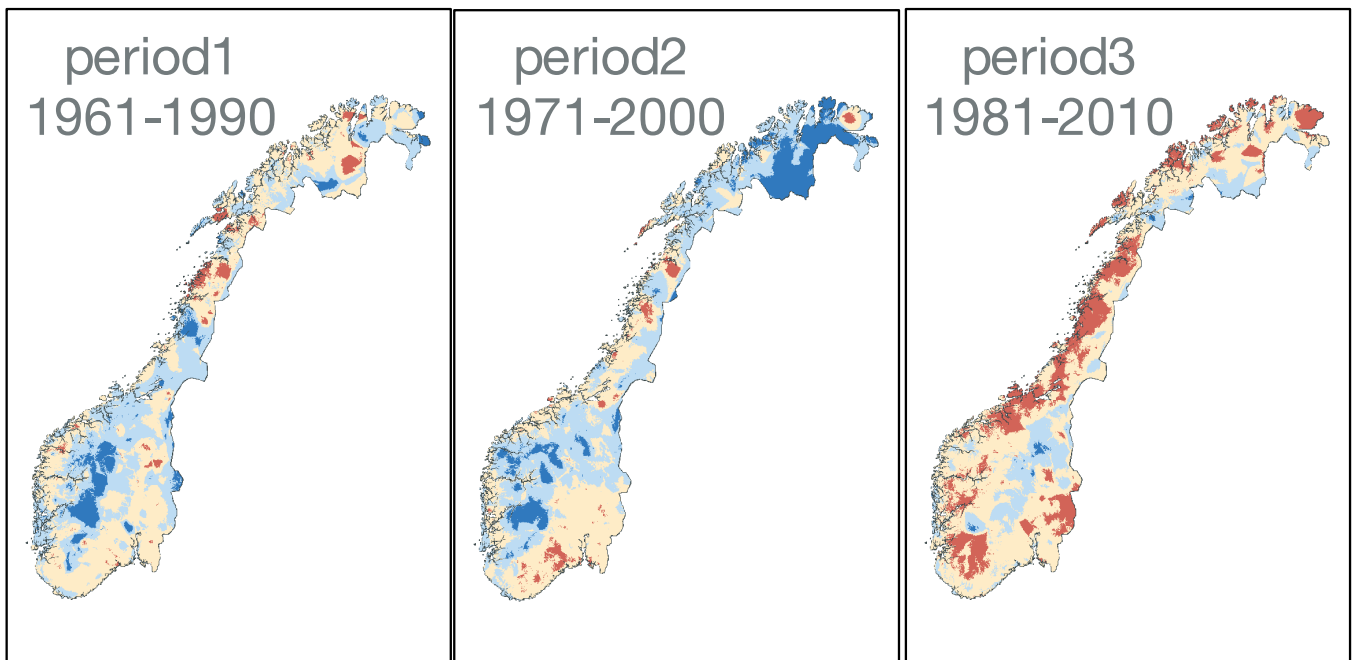


Fig. S6. Number of 10 d precipitation events exceeding 60 mm. (a) Climatology and temporal trends (neg.: negative; pos.: positive; sign.: significant; notsign.: not significant). (b) Changes between Period 1 and Period 3 (red solid lines: 10th and the 90th percentiles; red dashed line: zero change)

# Annual maximum snow depth



## Short-term trends



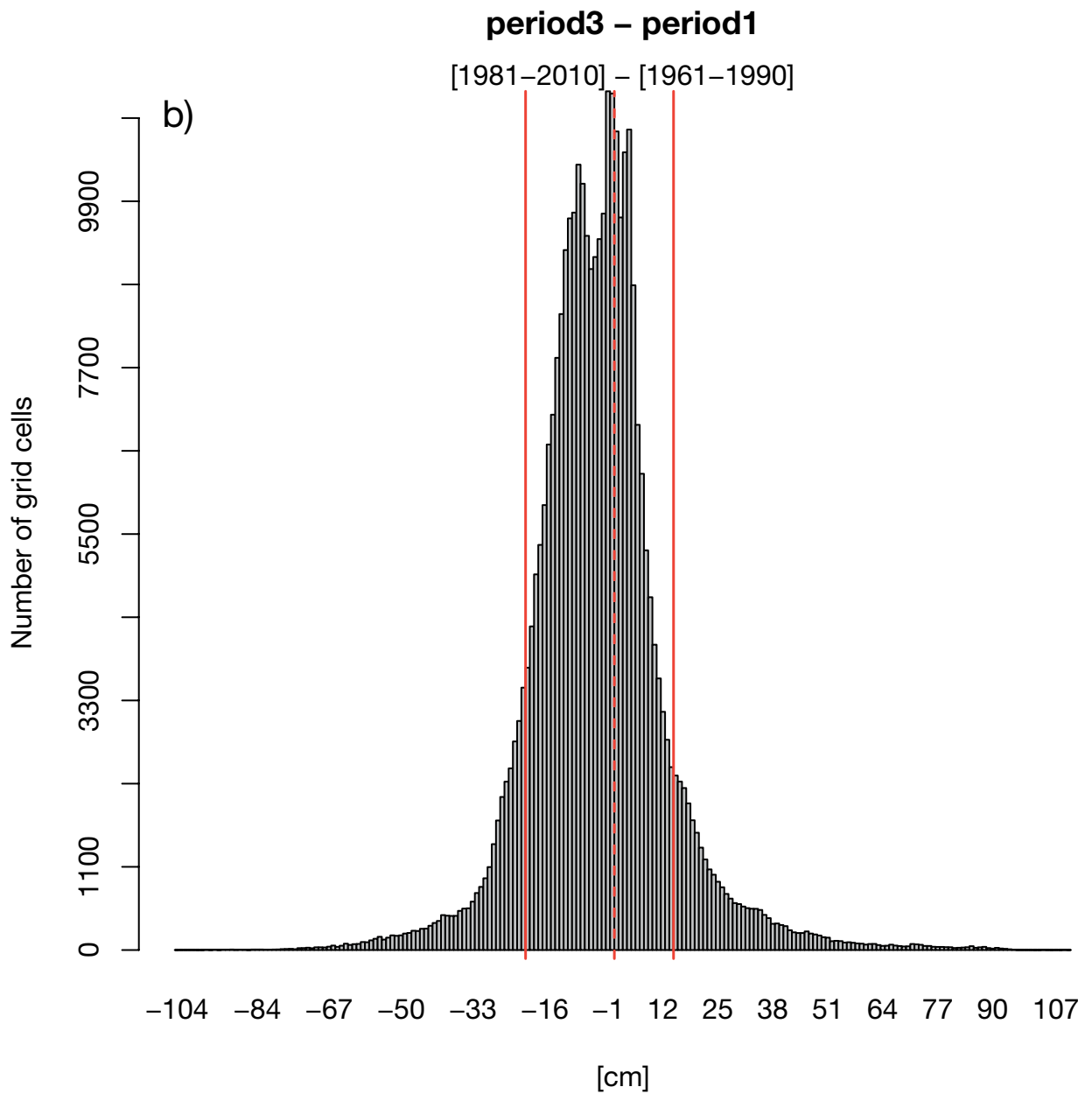
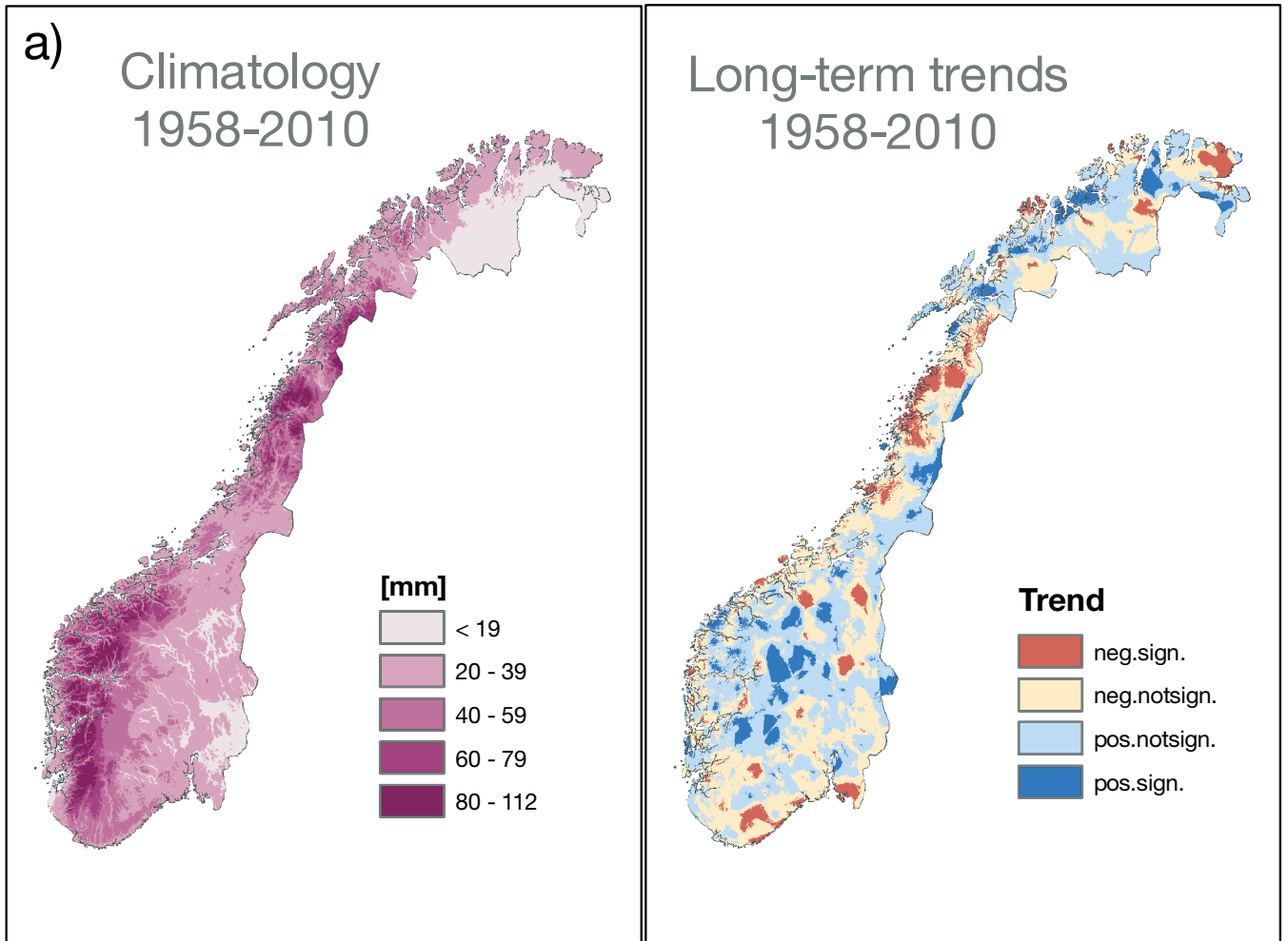
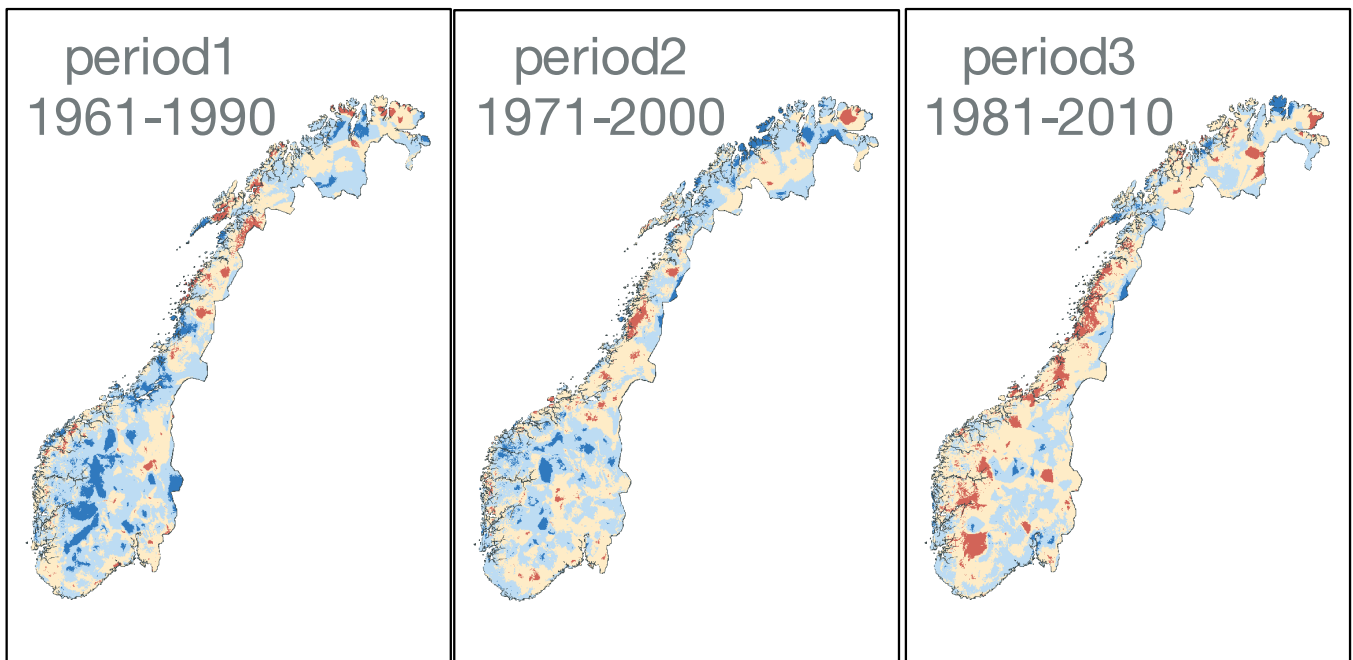


Fig. S7. Annual maximum snow depth. (a) Climatology and temporal trends (neg.: negative; pos.: positive; sign.: significant; notsign.: not significant). (b) Changes between Period 1 and Period 3 (red solid lines: 10th and the 90th percentiles; red dashed line: zero change)

# Annual maximum snowfall



## Short-term trends





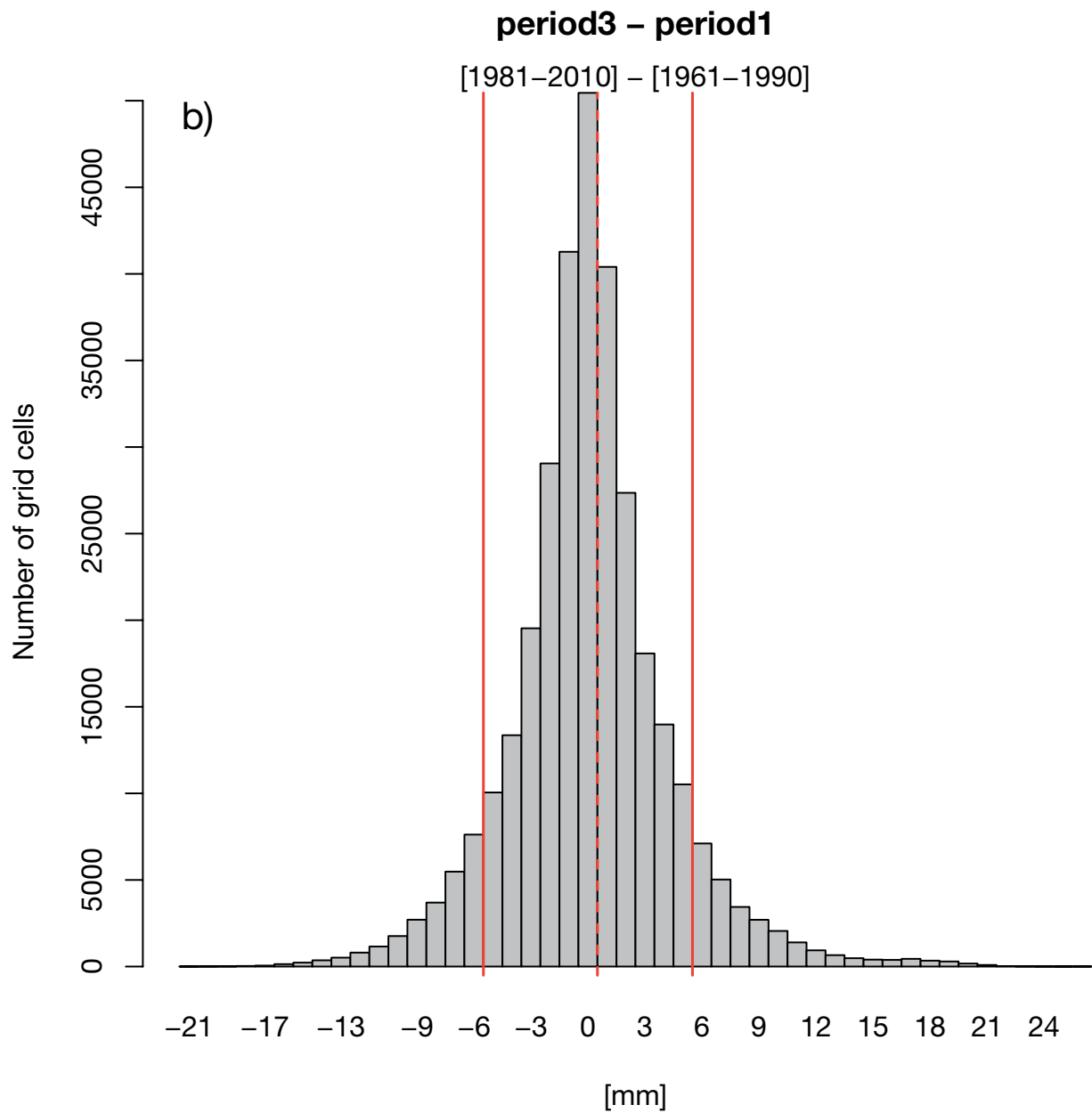


Fig. S8. Annual maximum snowfall. (a) Climatology and temporal trends (neg.: negative; pos.: positive; sign.: significant; notsign.: not significant). (b) Changes between Period 1 and Period 3 (red solid lines: 10th and the 90th percentiles; red dashed line: zero change)

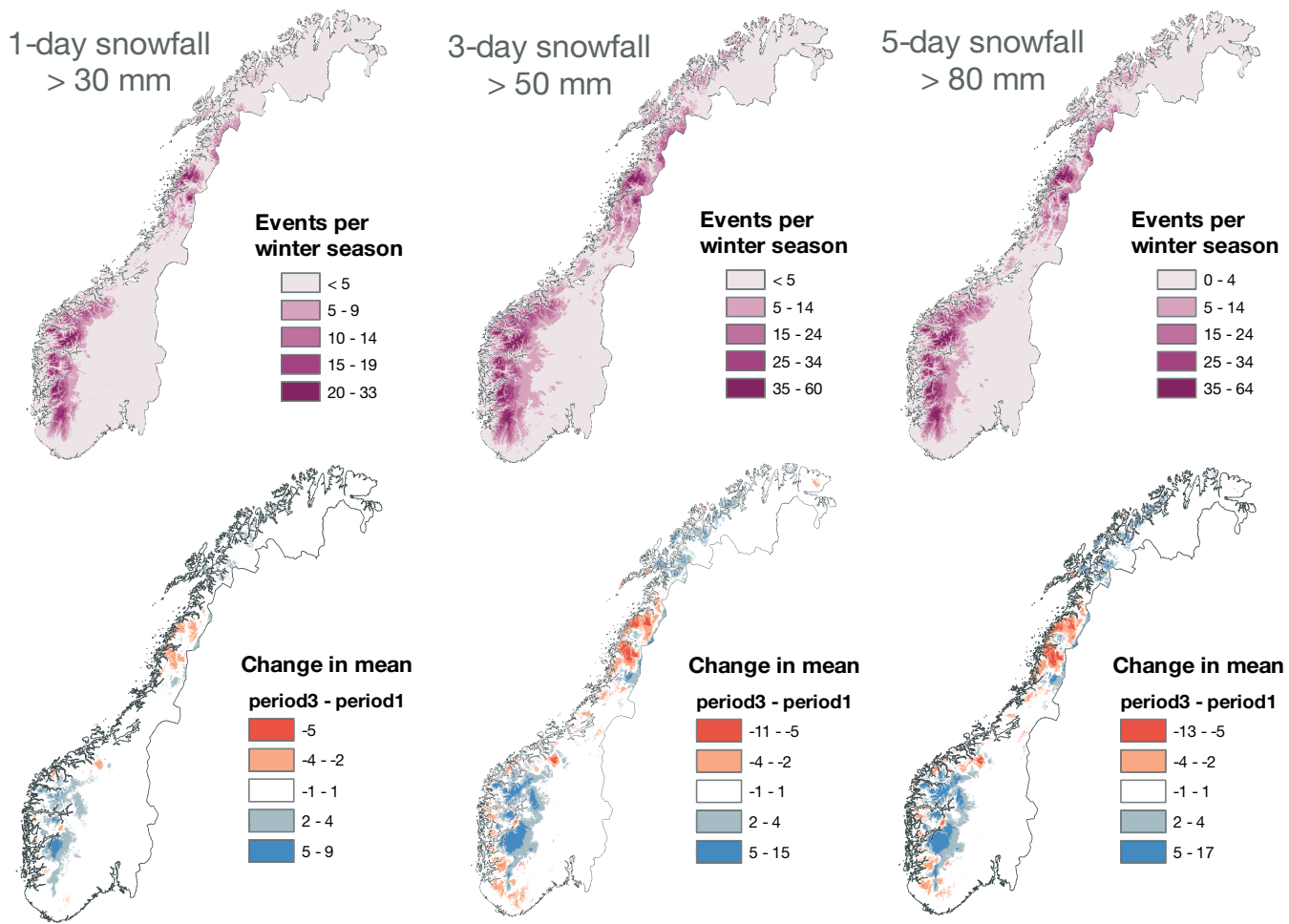
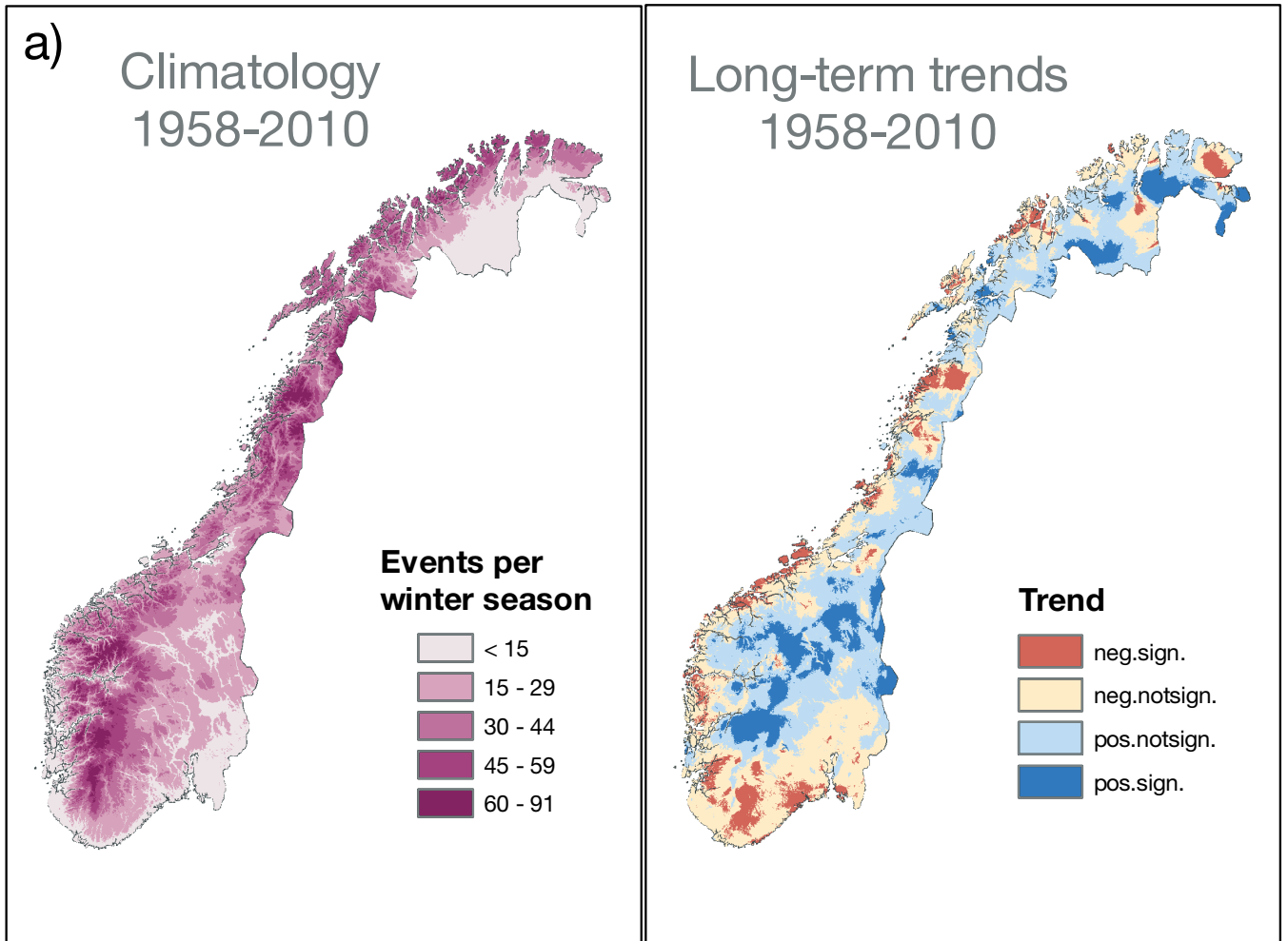
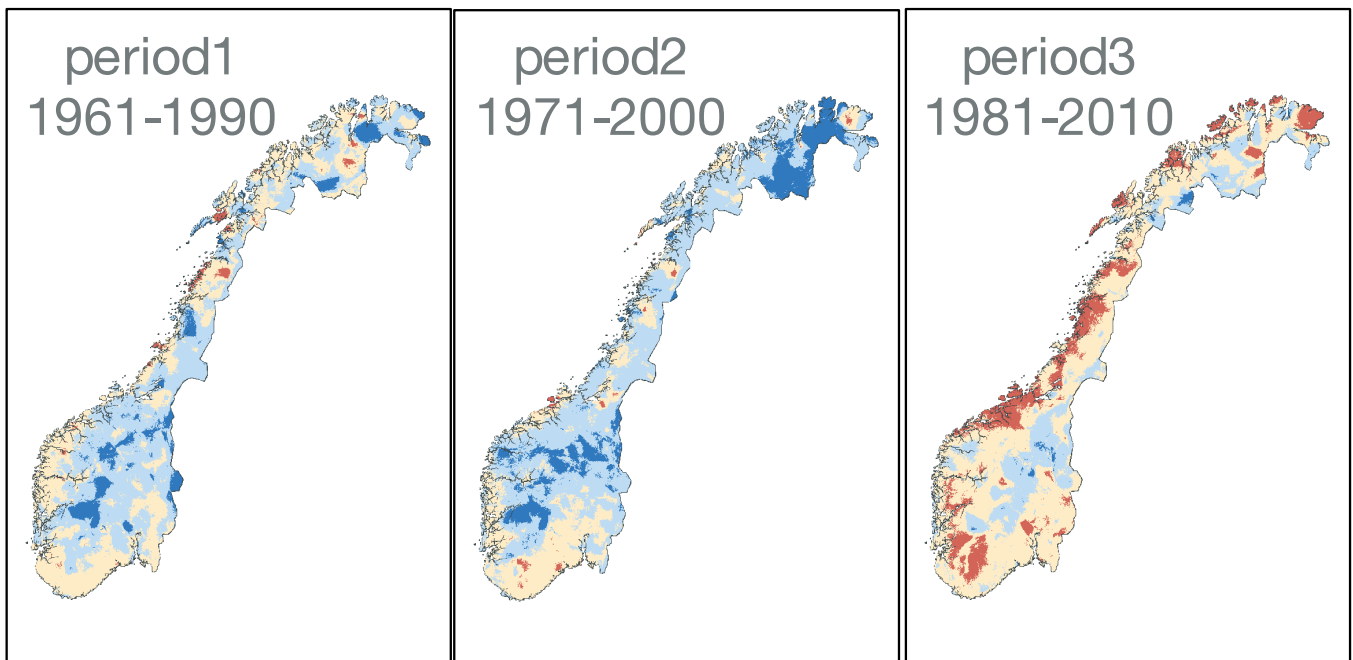


Fig. S9. Number of snowfall events exceeding specified thresholds

# 1-day snowfall exceeding 5 mm



## Short-term trends



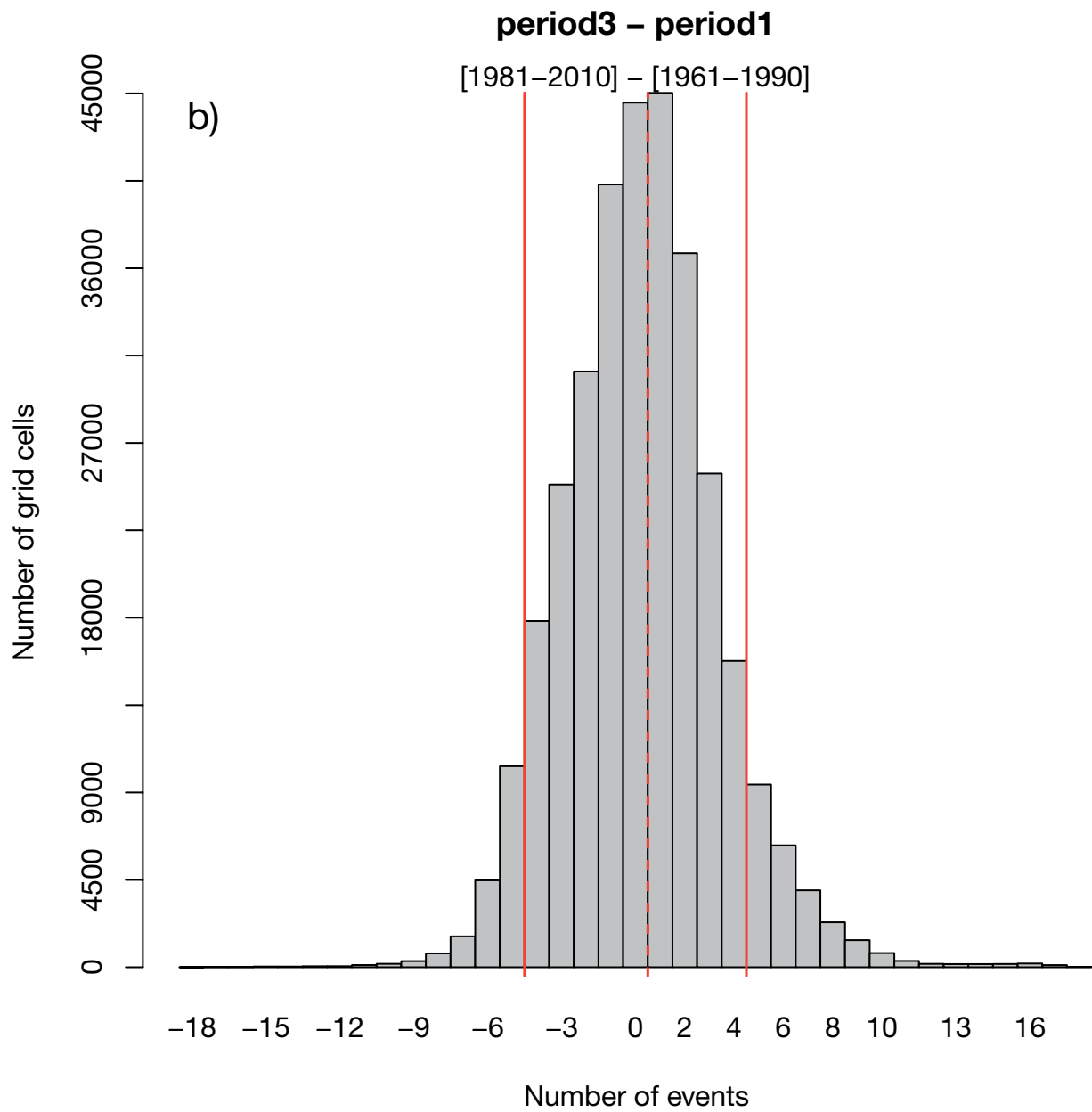
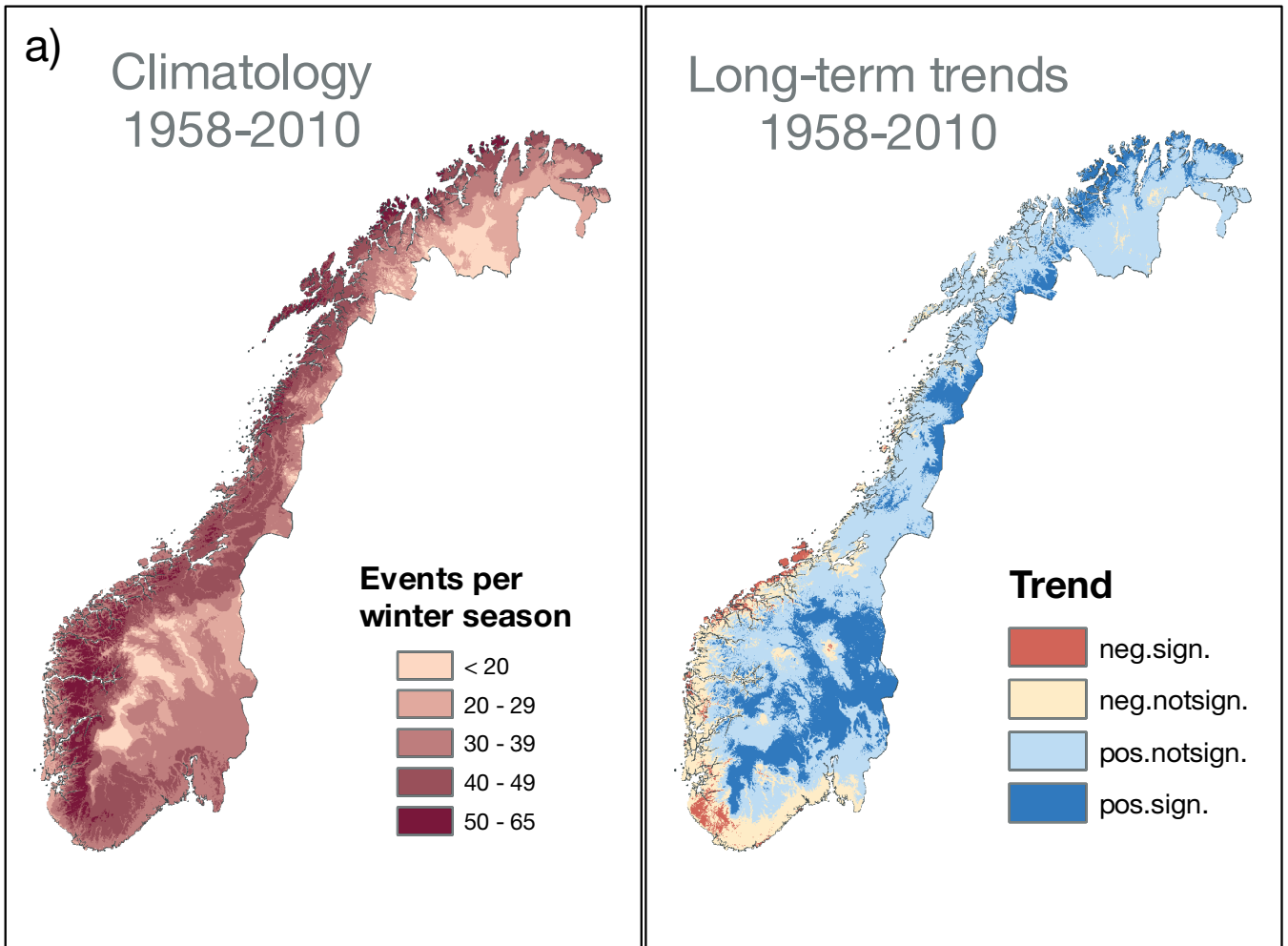
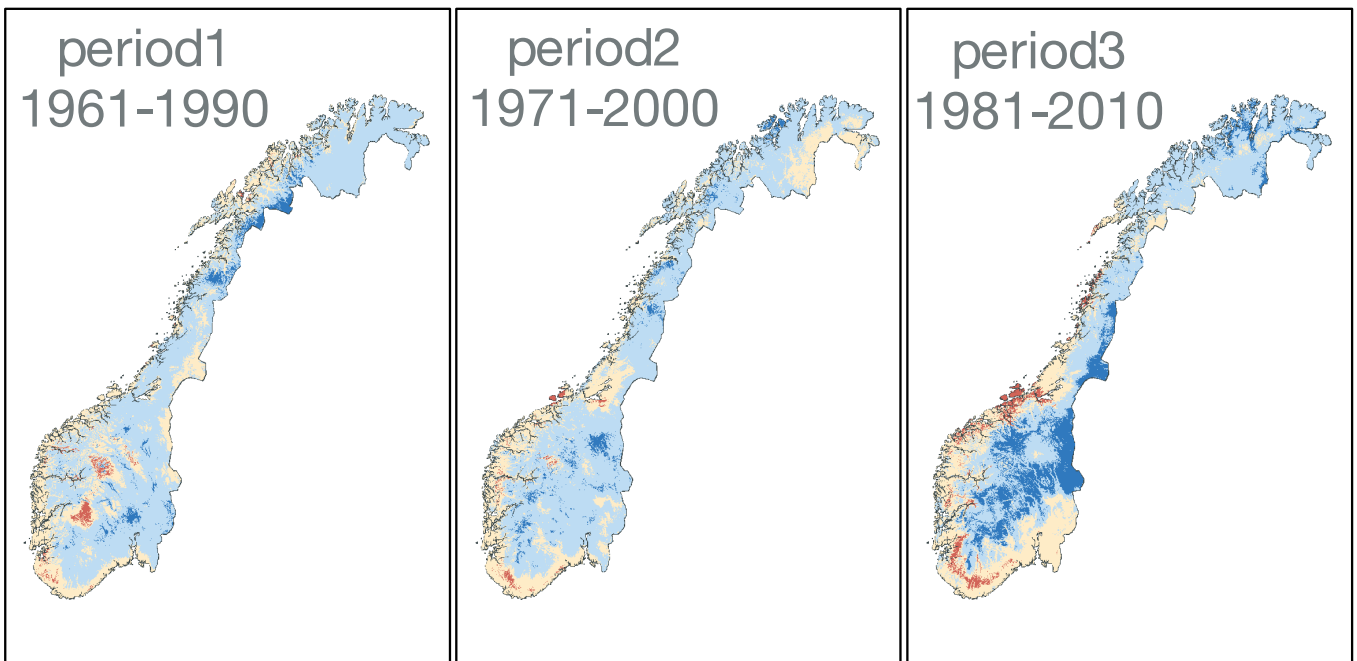


Fig. S10. Number of 1 day snowfall events exceeding 5 mm. (a) Climatology and temporal trends (neg.: negative; pos.: positive; sign.: significant; notsign.: not significant). (b) Changes between Period 1 and Period 3 (red solid lines: 10th and the 90th percentiles; red dashed line: zero change)

# Near-zero events



## Short-term trends



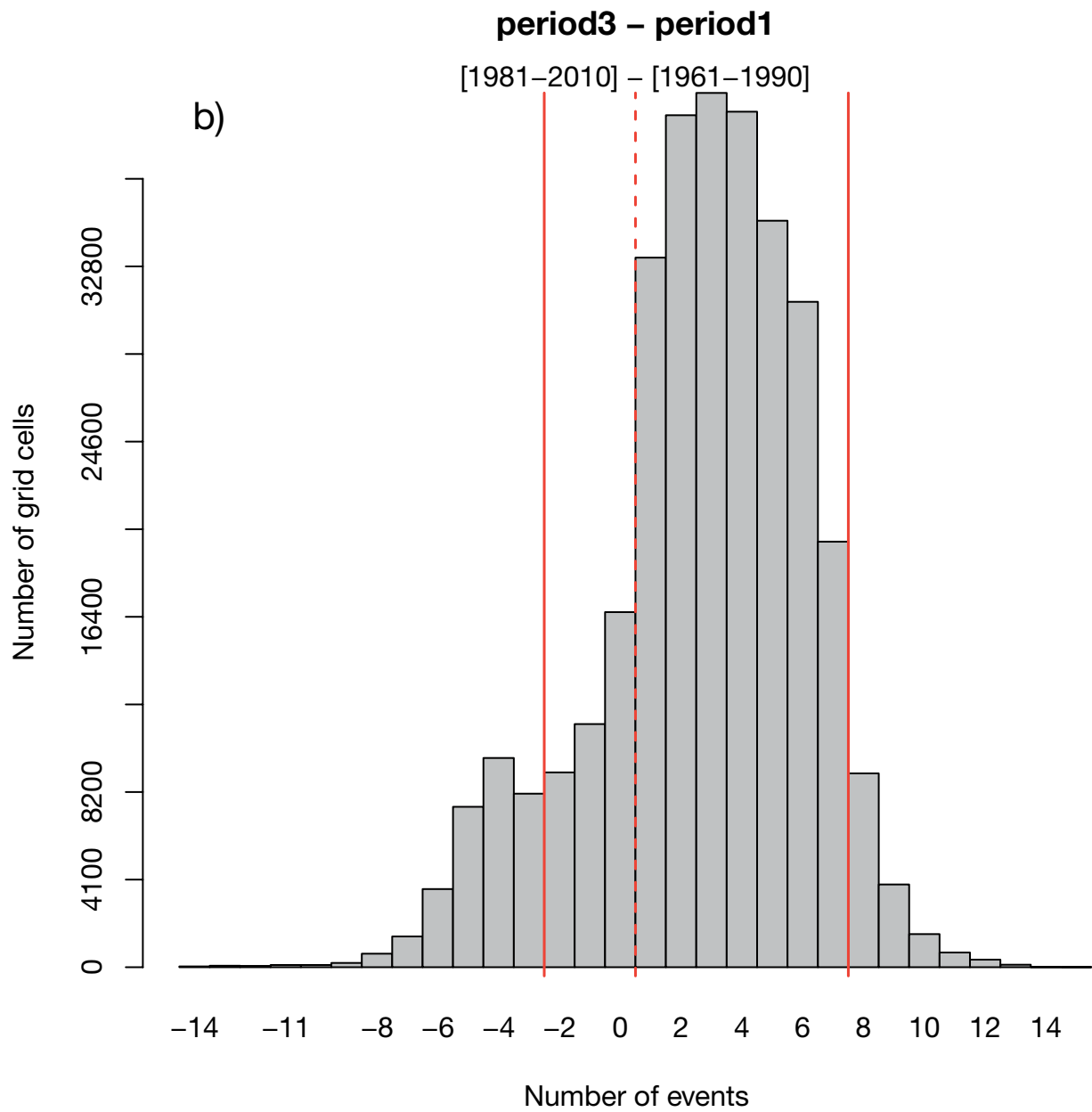


Fig. S11. Number of near-zero events. (a) Climatology and temporal trends (neg.: negative; pos.: positive; sign.: significant; notsign.: not significant). (b) Changes between Period 1 and Period 3 (red solid lines: 10th and the 90th percentiles; red dashed line: zero change)