

Supplement 1

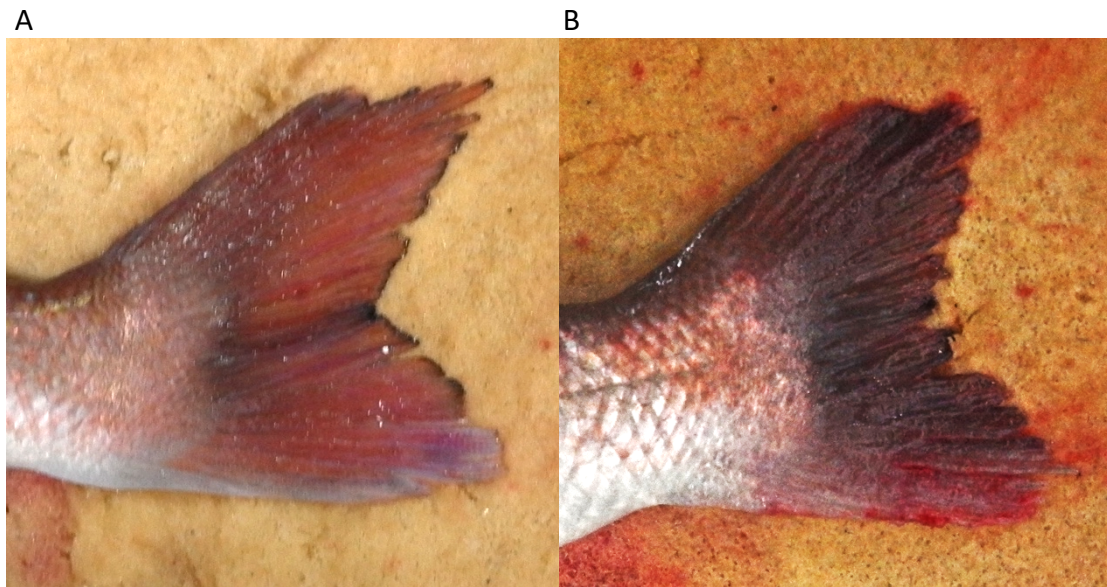


Fig. S1. Typical shapes of the caudal fin in farmed red sea bream. (A) Sharply angled form. (B) Blunted form.

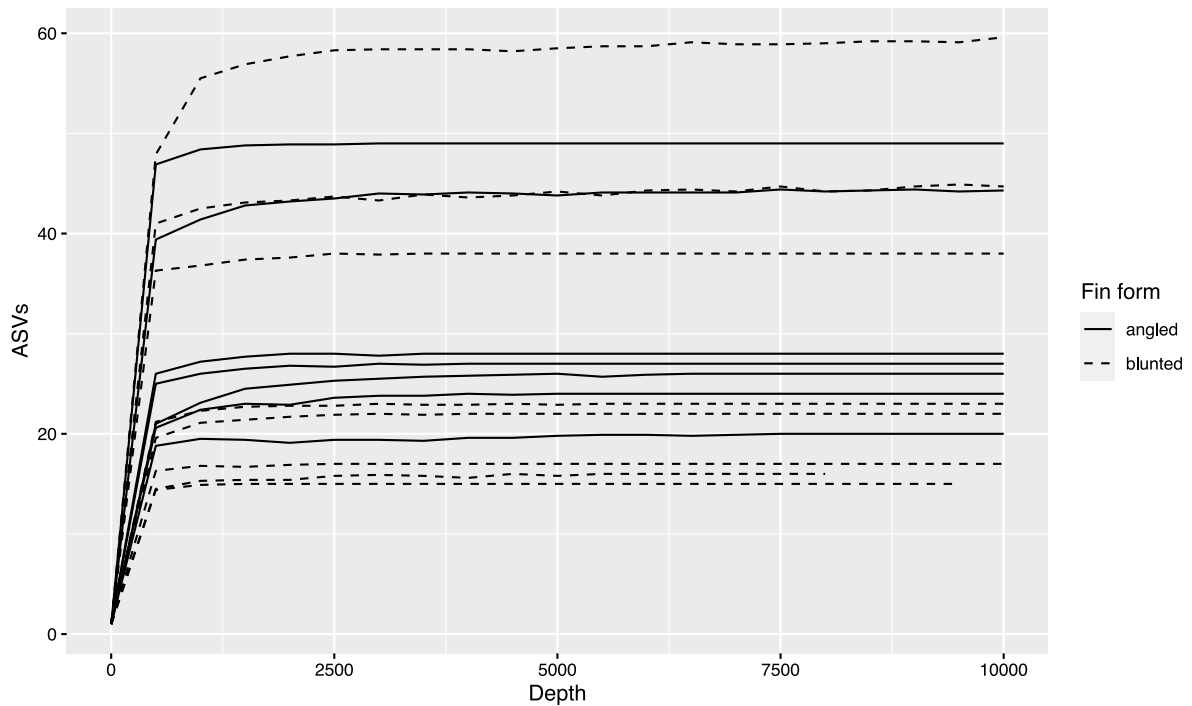


Fig. S2. Alpha rarefaction curves of reads assigned to ASV in each fish sample. Solid and dotted lines indicate angled and blunt shapes, respectively. X-axes represent sequencing depths, bins from 0 to 10000 reads.