

Supplement



Figure S1. Experimental place on the littoral zone.

Table S1. The mean (\pm SD) shell height and weight with shell of the sampled periwinkles.

	Height (mm)	Weight (g)
Control group	27.7 \pm 1.4	5.5 \pm 0.5
Mussels with <i>H. elongata</i>	27.9 \pm 2.4	4.9 \pm 1.2
Mussels with <i>C. lingua</i>	26.3 \pm 1.9	4.7 \pm 1.1

Table S2. The results from a Kruskal-Wallis test and median values of experimental groups of molluscs under field conditions in low tide.

	<i>Hymastla</i> 1	<i>Hymastla</i> 2	<i>Cryptocotyle</i> 1	<i>Cryptocotyle</i> 2	Kruskal-Wallis test	Median
<i>Hymastla</i> 1					8454.2	11.48 N = 3137
<i>Hymastla</i> 2	<0.0001				4680.8	8.67 N = 3137
<i>Cryptocotyle</i> 1	<0.0001	<0.0001			7661.8	11.03 N = 3137
<i>Cryptocotyle</i> 2	<0.0001	<0.0001	<0.0001		3289.5	7.62 N = 3137
Uninfected	>0.90	<0.0001	<0.001	0.0001	8503.7	11.57 N = 3137

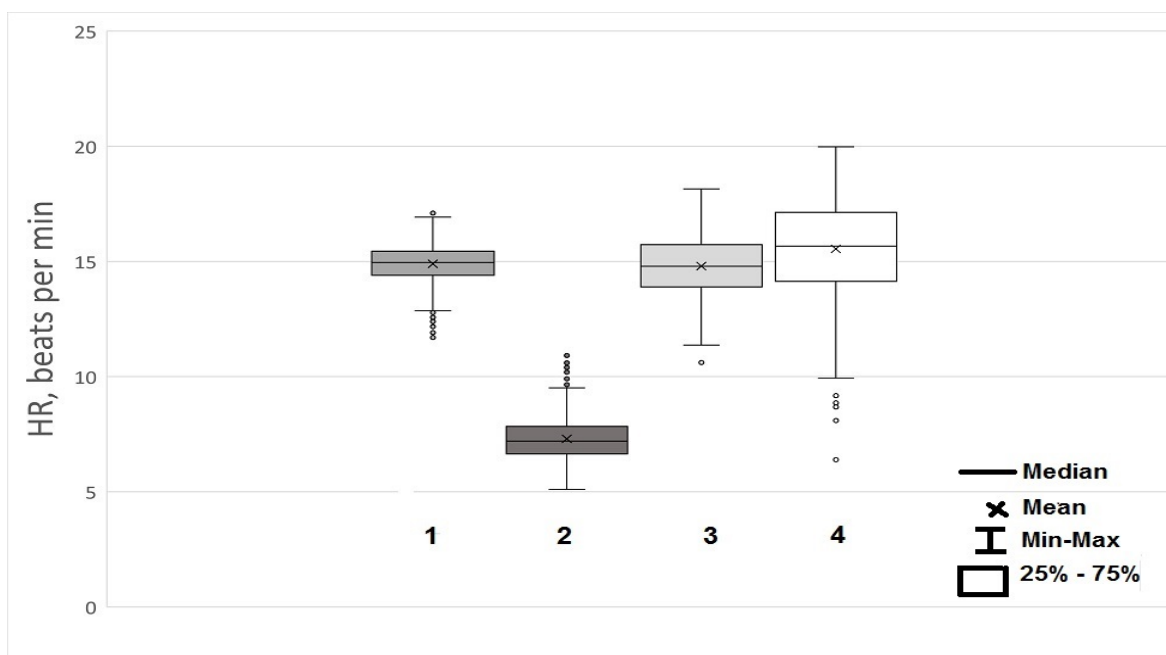


Figure S2. Boxplot of mollusc heart rate (HR) comparing under the laboratory condition. (1) Uninfected molluscs, (2) Molluscs infected by *Hymastla elongata*, (3) Molluscs infected by *Hymastla elongata* 2, (4) Molluscs infected by *C. lingua*

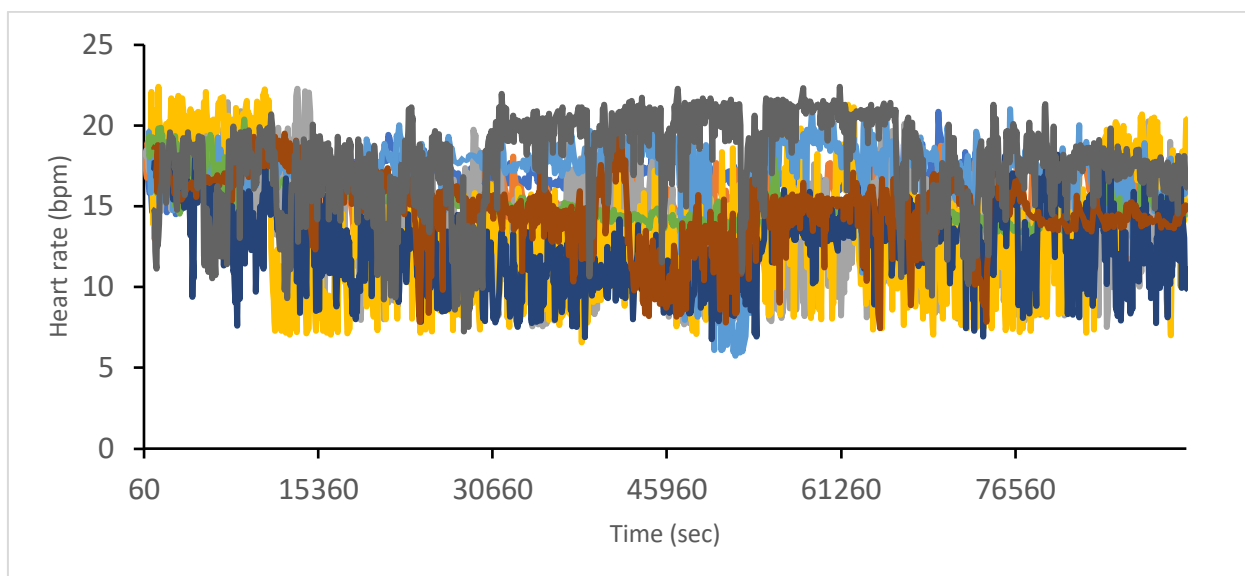


Figure S3. Changes in the HR during long-term monitoring of nine control molluscs under laboratory conditions. Each line corresponds to the HR dynamics of one mollusc.

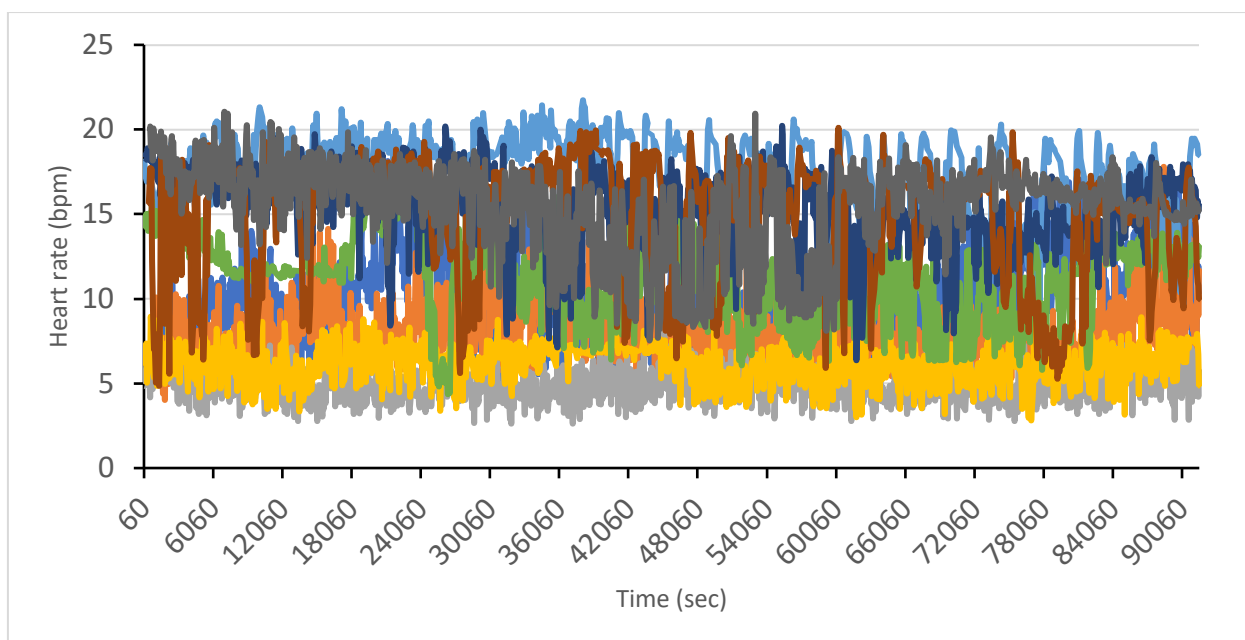


Figure S4. Changes in the HR during long-term monitoring of nine molluscs infected with *H. elongata* under laboratory conditions. Each line corresponds to the HR dynamics of one mollusc.

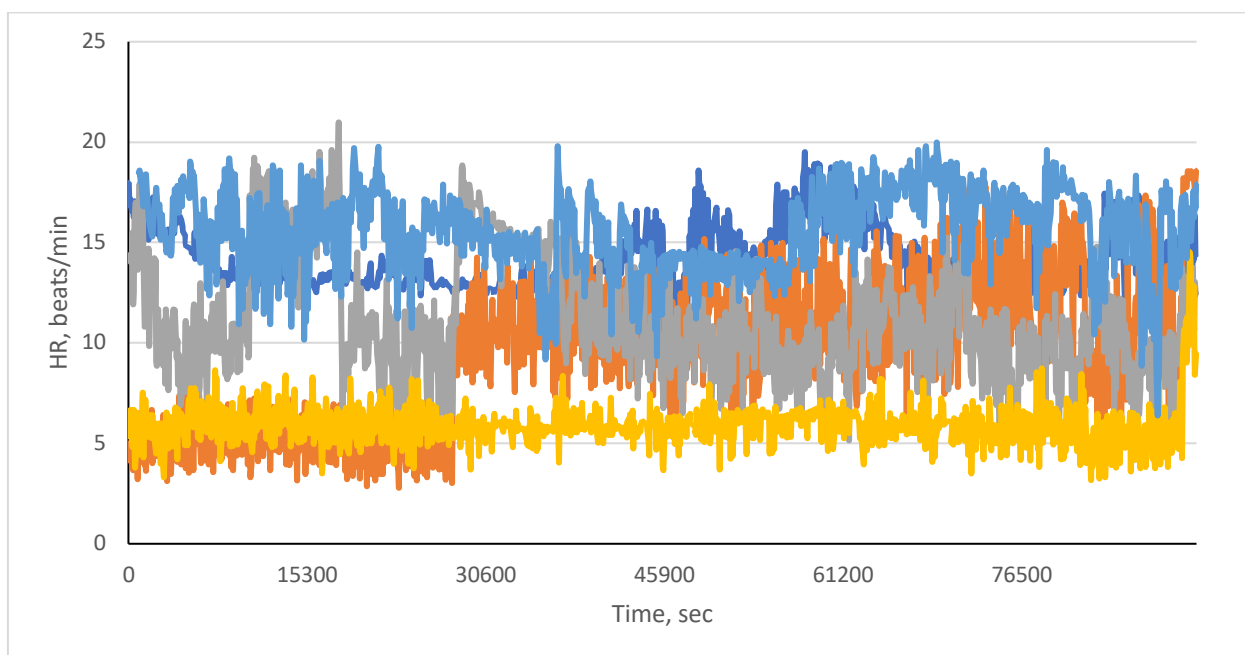


Figure S5. Changes in the HR during long-term monitoring of five molluscs infected with *C. lingua* under laboratory conditions.

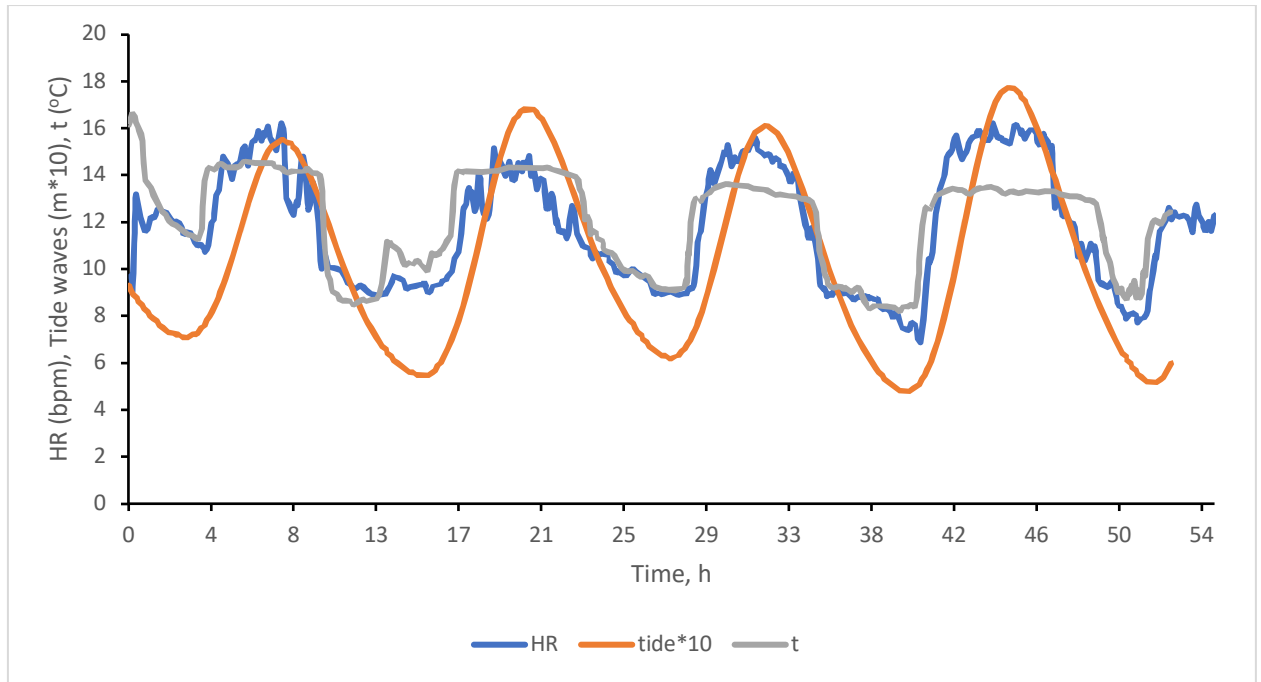


Figure S6. Changes in the HR of uninfected molluscs in situ (blue line - HR; grey line - temperature; orange line - tidal level).

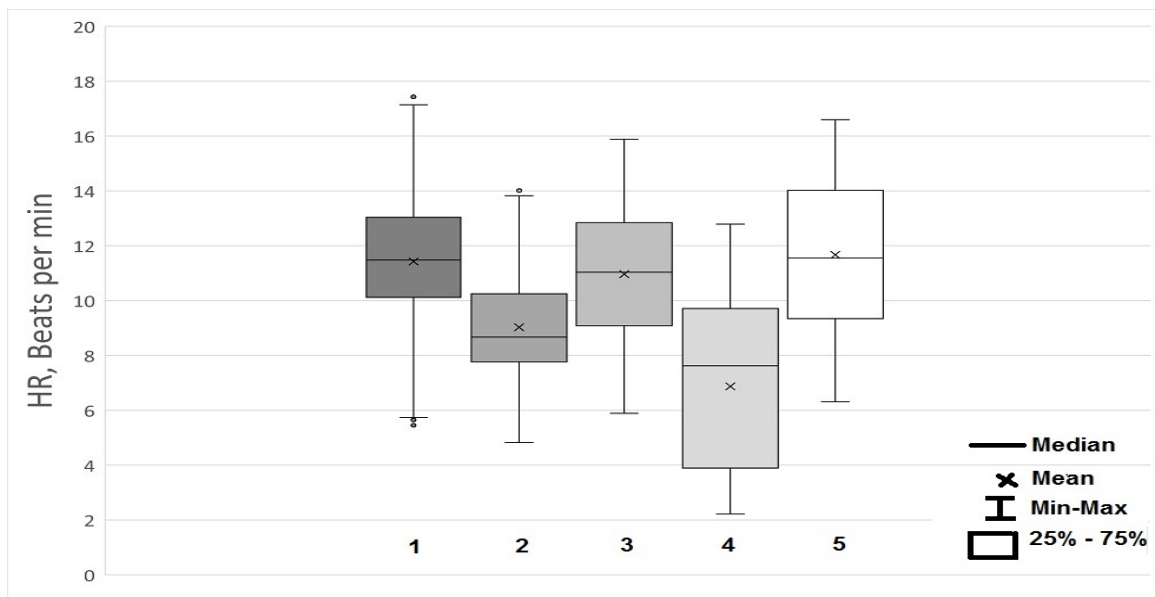


Figure S7. Boxplot of *L. littorea* HR during high tide. (1) Molluscs infected by *Hymastla elongata* 1, (2) Molluscs infected by *Hymastla elongata* 2, (3) Molluscs infected by *C. lingua* 1, (4) Molluscs infected by *C. lingua* 2, (5) Uninfected molluscs