

Supplemental Tables

Table S1. Sample collection data. Country, locality, number of samples DNA extracted (n), number of *Bonamia* sp. sequences, number of *B. exitiosa* sequences, Latitude, Longitude, Collection Date.

Country	Locality	n	<i>Bonamia</i> sp. sequences	<i>B. exitiosa</i> sequences	Latitude	Longitude	Collection Date
Argentina	Bahía Blanca Harbor	10	0	0	-38.78497	-62.29695	Oct 2017
Argentina	Bahía San Blas	20	0	0	-40.5394	-62.252666	Oct 2017
Canada	Ladysmith, British Columbia	10	0	0	48.99065	-123.808072	Aug 8, 2017
Chile	Estero Tongoy	14	0	0	-30.24433	-71.491032	Oct 8, 2019
Denmark	Wadden Sea	26	0	0	55.1859	8.6222	2013
France	Boursefranc-le-Chapus, Pertuis d'Antioche	10	0	0	45.85504	-1.170636	Jul 11, 2017
France	Esnandes, Aiguillon Bay, Pertuis Breton	11	0	0	46.23607	-1.15851	Jul 11, 2017
France	L'Herbe, Arcachon Bay	15	0	0	44.68641	-1.233772	Jul 24, 2017
Ireland	Lough Swilly	37	0	0	55.0206	-7.577	Nov 2008
Japan	Akkeshi	32	0	0	43.02131	144.836622	Aug 2017
Japan	Banzu Tidalflat, Tokyo Bay (Kisarazu)	24	0	0	35.41246	139.902977	Jun 9, 2017
Japan	Hiroshima	30	0	0	34.27547	132.266519	Nov 2021
Japan	Matsukawaura Lagoon (A branch Bay of Sendai Bay)	27	0	0	37.82314	140.954988	May 28, 2017
Japan	Matsushima Bay (A branch Bay of Sendai Bay)	41	0	0	38.35186	141.058982	Jul 24, 2017
Japan	Nishi Mone Bay (A branch Bay of Kesenuma Bay)	32	0	0	38.90008	141.624736	May 30, 2017
Japan	Munakata, Mihama, Fukui Prefecture	50	0	0	35.61256	135.913137	Apr 27, 2017
Japan	Ohkamo River in Izu Peninsura (Shimoda)	31	0	0	34.65528	138.918478	Aug 6, 2017
Japan	Okayama	33	0	0	34.45628	133.896859	Nov 2021
Japan	Oita	30	0	0	33.62537	131.193653	Nov 2021
Japan	Same River, Iwaki, Fukushima	30	0	0	36.90936	140.816924	July 14, 2017
Japan	Lake Saroma, Hokkaido	30	0	0	44.12084	143.966724	Aug 2017
Japan	Wakisaka, Takahama, Fukui Prefecture	39	0	0	35.50024	135.514476	April 27, 2017
Japan	Yojirō, Kagoshima	38	0	0	31.55863	130.562861	Aug 10, 2017
Japan	Yura, Sumoto, Hyogo Prefecture	23	0	0	34.27394	134.953667	May 8, 2017
Korea	Goseong Bay	28	0	0	34.9555	128.3257	Jun 1, 2017
Korea	Gwangyang	33	0	0	34.94519	127.77932	Jun 1, 2017
Korea	Koje Bay	31	0	0	34.7991	128.5829	Jun 1, 2017
New Zealand	Waikare Inlet, Bay of Islands	10	0	0	-35.31	174.18	Sep 10, 2017
New Zealand	Clevedon	12	0	0	-36.94	175.11	Oct 4, 2017
New Zealand	Dyers Creek, Mahurangi	10	0	0	-36.46	174.71	Sep 26, 2017
Norway	Tromlingene	50	0	0	58.4748	8.9067	2013
Spain	Ría de Ortigueira, Galicia	14	0	0	43.72127	-7.814205	Aug 2017
Spain	Ría de Betanzos, Galicia	11	0	0	43.34252	-8.23345	Aug 2017
Sweden	Svallhagen	22	0	0	58.8684	11.1551	2013
United States	Hood Canal, Hamma Hamma River, Washington	10	0	0	47.54666	-123.041383	Jun 25, 2017
United States	Willapa Bay, Nahcotta Channel, Washington	10	0	0	46.46874	-124.023696	May 20, 2017
United States	Alamitos Bay, Los Angeles County, California	12	0	0	33.74624	-118.135526	Sep 2017
United States	San Diego Bay, San Diego County, California	12	1	5	32.62674	-117.129703	Sep 2017
United States	Newport Bay, Orange County, California	10	0	1	33.60813	-117.92009	Sep 2017
United States	Los Penasquitos Lagoon, California	10	0	0	32.93318	-117.259885	Oct 2017
United States	Tijuana Estuary, Boca Rio, California	10	0	0	32.5595	-117.129165	Oct 2017

Table S2. *Bonamia* spp. prevalence data (if available) from each host species found in each region sampled in this study. “Unknown” = no report of *Bonamia* to-date either because the parasites are not present or have not been screened or detected. “-” = host not known from this country/region.

Country/region sampled	<i>Crassostrea ariakensis</i> *	<i>Ostrea chilensis</i>	<i>Ostrea edulis</i>	<i>Ostrea equestris</i>	<i>Ostrea lurida</i>	<i>Ostrea puelchana</i>	<i>Saccostrea glomerata</i>	Reference
Argentina	-	-	-	? (n=3 [†])	-	10.5% (n=57)	-	Hill et al. 2014
Chile	-	18.8% (n=32)	-	-	-	-	-	Hill et al. 2014
Denmark	-	-	Unknown	-	-	-	-	Sas et al. 2020, Madsen & Thomassen 2015
France	-	-	13% (mean [‡])	-	-	Unknown	-	Sas et al. 2020; Arzul et al. 2006, Pascual et al. 1991, Goulletquer et al. 2002
Ireland	-	-	1.7-65.5% (n=58)	-	-	-	-	Sas et al. 2020; Culloty & Mulcahy 1996
Japan	Unknown	-	-	-	-	-	-	CABI 2022
New Zealand	-	0% (n=50); 5.0% (n=40); 79.9% (n=149)	-	5.6% (n=90); 9.1% (n=44)	-	-	0% (n=60)	Cranfield et al. 2005; Hill et al. 2014, Lane et al. 2016
Norway	-	-	Unknown	-	-	-	-	Sas et al. 2020, CABI 2022
Pacific Northwest (USA, CAN)	-	-	0% (n = 35); 22% (n = 27)	-	0% (n=25)	-	-	Elston et al. 1986, Marty et al. 2006, Hill et al. 2014
South Korea	Unknown	-	-	-	-	-	-	CABI 2022
Spain	-	-	10% (n=10); 100% (n=25)	-	-	-	-	Montes et al. 2003, Abollo et al. 2008, Carrasco et al. 2012
Sweden	-	-	Unknown	-	-	-	-	CABI 2022
Southern California (USA)	-	-	20.7-82.0% (n=32 [§])	-	0% (n=15 [§]); 21.7-86.7% (n=15 [§]), 88.3% (n=60)	-	-	Hill et al. 2014

*Host species present became infected when experimentally introduced to North Carolina, USA (outside their native range) (Burreson et al. 2004)

[†] Histological confirmation of infection in 3 individuals; no prevalence data

[‡] mean between 1980-2003 excluding spat

[§] more than one individual in a single DNA extraction and therefore PCR

Table S3. List of GenBank accession numbers used in (A) the 240-base pair alignment of 331 *Bonamia exitiosa* first internal transcribed spacer region ribosomal RNA (ITS rRNA) gene sequences and (B) those used in the 489-base pair alignment of 321 ITS rRNA gene sequences used for subsequent TCS network analysis. **Bold** text indicates sequences generated herein. CA = California, NC = North Carolina, SC = South Carolina, FL = Florida

Locality	Host species	Accession No.
(A)		
Argentina	<i>Ostrea puelchana</i>	JF831603.1
Argentina	<i>Ostrea puelchana</i>	JF831604.1
Argentina	<i>Ostrea puelchana</i>	JF831605.1
Argentina	<i>Ostrea puelchana</i>	JF831606.1
Argentina	<i>Ostrea puelchana</i>	JF831607.1
Argentina	<i>Ostrea puelchana</i>	JF831608.1
Argentina	<i>Ostrea puelchana</i>	JF831609.1
Argentina	<i>Ostrea puelchana</i>	JF831610.1
Argentina	<i>Ostrea puelchana</i>	JF831611.1
Argentina	<i>Ostrea puelchana</i>	JF831612.1
Argentina	<i>Ostrea puelchana</i>	JF831613.1
Argentina	<i>Ostrea puelchana</i>	JF831614.1
Argentina	<i>Ostrea puelchana</i>	JF831615.1
Argentina	<i>Ostrea puelchana</i>	JF831616.1
Argentina	<i>Ostrea puelchana</i>	JF831617.1
Argentina	<i>Ostrea puelchana</i>	JF831618.1
Argentina	<i>Ostrea puelchana</i>	JF831619.1
Argentina	<i>Ostrea puelchana</i>	JF831620.1
Argentina	<i>Ostrea puelchana</i>	JF831621.1
Argentina	<i>Ostrea puelchana</i>	JF831622.1
Argentina	<i>Ostrea puelchana</i>	JF831623.1
Argentina	<i>Ostrea puelchana</i>	JF831624.1
Argentina	<i>Ostrea puelchana</i>	JF831625.1
Argentina	<i>Ostrea puelchana</i>	JF831626.1
Argentina	<i>Ostrea puelchana</i>	JF831627.1
Argentina	<i>Ostrea puelchana</i>	JF831628.1
Argentina	<i>Ostrea puelchana</i>	JF831629.1
Argentina	<i>Ostrea puelchana</i>	JF831630.1
Argentina	<i>Ostrea puelchana</i>	JF831631.1
Argentina	<i>Ostrea puelchana</i>	JF831632.1
Argentina	<i>Ostrea puelchana</i>	JF831633.1
Argentina	<i>Ostrea puelchana</i>	JF831634.1
Argentina	<i>Ostrea puelchana</i>	JF831635.1
Argentina	<i>Ostrea puelchana</i>	JF831636.1
Argentina	<i>Ostrea puelchana</i>	JF831637.1
Argentina	<i>Ostrea puelchana</i>	JF831638.1
Argentina	<i>Ostrea stentina</i>	JF831556.1

Locality	Host species	Accession No.
Argentina	<i>Ostrea stentina</i>	JF831557.1
Argentina	<i>Ostrea stentina</i>	JF831558.1
Argentina	<i>Ostrea stentina</i>	JF831559.1
Argentina	<i>Ostrea stentina</i>	JF831560.1
Argentina	<i>Ostrea stentina</i>	JF831561.1
Argentina	<i>Ostrea stentina</i>	JF831562.1
Argentina	<i>Ostrea stentina</i>	JF831563.1
Argentina	<i>Ostrea stentina</i>	JF831564.1
Argentina	<i>Ostrea stentina</i>	JF831565.1
Argentina	<i>Ostrea stentina</i>	JF831566.1
Argentina	<i>Ostrea stentina</i>	JF831567.1
Argentina	<i>Ostrea stentina</i>	JF831568.1
Argentina	<i>Ostrea stentina</i>	JF831569.1
Argentina	<i>Ostrea stentina</i>	JF831570.1
Argentina	<i>Ostrea stentina</i>	JF831571.1
Argentina	<i>Ostrea stentina</i>	JF831572.1
Argentina	<i>Ostrea stentina</i>	JF831573.1
Argentina	<i>Ostrea stentina</i>	JF831574.1
Australia	<i>Ostrea angasi</i>	JF831678.1
Australia	<i>Ostrea angasi</i>	JF831679.1
Australia	<i>Ostrea angasi</i>	JF831680.1
Australia	<i>Saccostrea glomerata</i>	JF831681.1
Australia	<i>Saccostrea glomerata</i>	JF831682.1
Australia	<i>Saccostrea glomerata</i>	JF831683.1
Australia	<i>Saccostrea glomerata</i>	JF831684.1
New Zealand	<i>Ostrea stentina</i>	JF831658.1
New Zealand	<i>Ostrea stentina</i>	JF831659.1
New Zealand	<i>Ostrea stentina</i>	JF831660.1
New Zealand	<i>Ostrea stentina</i>	JF831661.1
New Zealand	<i>Ostrea stentina</i>	JF831662.1
New Zealand	<i>Ostrea stentina</i>	JF831663.1
New Zealand	<i>Ostrea stentina</i>	JF831664.1
New Zealand	<i>Ostrea stentina</i>	JF831665.1
New Zealand	<i>Ostrea stentina</i>	JF831666.1
New Zealand	<i>Ostrea stentina</i>	JF831667.1
New Zealand	<i>Ostrea stentina</i>	JF831668.1
New Zealand	<i>Ostrea stentina</i>	JF831669.1
New Zealand	<i>Ostrea stentina</i>	JF831670.1
New Zealand	<i>Ostrea stentina</i>	JF831671.1
New Zealand	<i>Ostrea stentina</i>	JF831672.1
New Zealand	<i>Ostrea stentina</i>	JF831673.1
New Zealand	<i>Ostrea stentina</i>	JF831674.1
New Zealand	<i>Ostrea stentina</i>	JF831675.1

Locality	Host species	Accession No.
New Zealand	<i>Ostrea stentina</i>	JF831676.1
New Zealand	<i>Ostrea stentina</i>	JF831677.1
New Zealand	<i>Ostrea chilensis</i>	JF831639.1
New Zealand	<i>Ostrea chilensis</i>	JF831640.1
New Zealand	<i>Ostrea chilensis</i>	JF831641.1
New Zealand	<i>Ostrea chilensis</i>	JF831642.1
New Zealand	<i>Ostrea chilensis</i>	JF831643.1
New Zealand	<i>Ostrea chilensis</i>	JF831644.1
New Zealand	<i>Ostrea chilensis</i>	JF831645.1
New Zealand	<i>Ostrea chilensis</i>	JF831646.1
New Zealand	<i>Ostrea chilensis</i>	JF831647.1
New Zealand	<i>Ostrea chilensis</i>	JF831648.1
New Zealand	<i>Ostrea chilensis</i>	JF831649.1
New Zealand	<i>Ostrea chilensis</i>	JF831650.1
New Zealand	<i>Ostrea chilensis</i>	JF831651.1
New Zealand	<i>Ostrea chilensis</i>	JF831652.1
New Zealand	<i>Ostrea chilensis</i>	JF831653.1
New Zealand	<i>Ostrea chilensis</i>	JF831654.1
New Zealand	<i>Ostrea chilensis</i>	JF831655.1
New Zealand	<i>Ostrea chilensis</i>	JF831656.1
New Zealand	<i>Ostrea chilensis</i>	JF831657.1
New Zealand	<i>Ostrea chilensis</i>	KY680577.1
New Zealand	<i>Ostrea chilensis</i>	KY680578.1
New Zealand	<i>Ostrea chilensis</i>	KY680579.1
New Zealand	<i>Ostrea chilensis</i>	KY680580.1
New Zealand	<i>Ostrea chilensis</i>	KY680581.1
New Zealand	<i>Ostrea chilensis</i>	KY680582.1
New Zealand	<i>Ostrea chilensis</i>	KY680583.1
New Zealand	<i>Ostrea chilensis</i>	KY680584.1
New Zealand	<i>Ostrea chilensis</i>	KY680585.1
New Zealand	<i>Ostrea chilensis</i>	KY680586.1
New Zealand	<i>Ostrea chilensis</i>	KY680587.1
New Zealand	<i>Ostrea chilensis</i>	KY680588.1
New Zealand	<i>Ostrea chilensis</i>	KY680589.1
New Zealand	<i>Ostrea chilensis</i>	KY680590.1
New Zealand	<i>Ostrea chilensis</i>	KY680591.1
New Zealand	<i>Ostrea chilensis</i>	KY680592.1
New Zealand	<i>Ostrea chilensis</i>	KY680593.1
New Zealand	<i>Ostrea chilensis</i>	KY680594.1
New Zealand	<i>Ostrea chilensis</i>	KY680595.1
New Zealand	<i>Ostrea chilensis</i>	KY680596.1
New Zealand	<i>Ostrea chilensis</i>	KY680597.1
New Zealand	<i>Ostrea chilensis</i>	KY680598.1

Locality	Host species	Accession No.
New Zealand	<i>Ostrea chilensis</i>	KY680599.1
New Zealand	<i>Ostrea chilensis</i>	KY680600.1
New Zealand	<i>Ostrea chilensis</i>	KY680601.1
New Zealand	<i>Ostrea chilensis</i>	KY680602.1
New Zealand	<i>Ostrea chilensis</i>	KY680603.1
New Zealand	<i>Ostrea chilensis</i>	KY680604.1
New Zealand	<i>Ostrea chilensis</i>	KY680605.1
New Zealand	<i>Ostrea chilensis</i>	KY680606.1
New Zealand	<i>Ostrea chilensis</i>	KY680607.1
New Zealand	<i>Ostrea chilensis</i>	KY680608.1
New Zealand	<i>Ostrea chilensis</i>	KY680609.1
New Zealand	<i>Ostrea chilensis</i>	KY680610.1
New Zealand	<i>Ostrea chilensis</i>	KY680611.1
New Zealand	<i>Ostrea chilensis</i>	KY680612.1
New Zealand	<i>Ostrea chilensis</i>	KY680613.1
New Zealand	<i>Ostrea chilensis</i>	KY680614.1
New Zealand	<i>Ostrea chilensis</i>	KY680615.1
New Zealand	<i>Ostrea chilensis</i>	KY680616.1
New Zealand	<i>Ostrea chilensis</i>	KY680617.1
New Zealand	<i>Ostrea chilensis</i>	KY680618.1
New Zealand	<i>Ostrea chilensis</i>	KY680619.1
New Zealand	<i>Ostrea chilensis</i>	KY680620.1
New Zealand	<i>Ostrea chilensis</i>	KY680621.1
New Zealand	<i>Ostrea chilensis</i>	KY680622.1
New Zealand	<i>Ostrea chilensis</i>	KY680623.1
New Zealand	<i>Ostrea chilensis</i>	KY680624.1
New Zealand	<i>Ostrea chilensis</i>	KY680625.1
New Zealand	<i>Ostrea chilensis</i>	KY680626.1
New Zealand	<i>Ostrea chilensis</i>	KY680627.1
New Zealand	<i>Ostrea chilensis</i>	KY680628.1
New Zealand	<i>Ostrea chilensis</i>	KY680629.1
New Zealand	<i>Ostrea chilensis</i>	KY680630.1
New Zealand	<i>Ostrea chilensis</i>	KY680631.1
New Zealand	<i>Ostrea chilensis</i>	KY680632.1
New Zealand	<i>Ostrea chilensis</i>	KY680633.1
New Zealand	<i>Ostrea chilensis</i>	KY680634.1
New Zealand	<i>Ostrea chilensis</i>	KY680635.1
New Zealand	<i>Ostrea chilensis</i>	KY680636.1
New Zealand	<i>Ostrea chilensis</i>	KY680637.1
New Zealand	<i>Ostrea chilensis</i>	KY680638.1
New Zealand	<i>Ostrea chilensis</i>	KY680639.1
New Zealand	<i>Ostrea chilensis</i>	KY680640.1
New Zealand	<i>Ostrea chilensis</i>	KY680641.1

Locality	Host species	Accession No.
New Zealand	<i>Ostrea chilensis</i>	KY680642.1
New Zealand	<i>Ostrea chilensis</i>	KY680643.1
New Zealand	<i>Ostrea chilensis</i>	KY680644.1
New Zealand	<i>Ostrea chilensis</i>	KY680645.1
Tunisia	<i>Ostrea stentina</i>	JF831685.1
Tunisia	<i>Ostrea stentina</i>	JF831687.1
Tunisia	<i>Ostrea stentina</i>	JF831688.1
Tunisia	<i>Ostrea stentina</i>	JF831689.1
Tunisia	<i>Ostrea stentina</i>	JF831690.1
Tunisia	<i>Ostrea stentina</i>	JF831691.1
Tunisia	<i>Ostrea stentina</i>	JF831692.1
Tunisia	<i>Ostrea stentina</i>	JF831693.1
Tunisia	<i>Ostrea stentina</i>	JF831694.1
Tunisia	<i>Ostrea stentina</i>	JF831695.1
Tunisia	<i>Ostrea stentina</i>	JF831696.1
Tunisia	<i>Ostrea stentina</i>	JF831697.1
Tunisia	<i>Ostrea stentina</i>	JF831698.1
Tunisia	<i>Ostrea stentina</i>	JF831699.1
Tunisia	<i>Ostrea stentina</i>	JF831700.1
Tunisia	<i>Ostrea stentina</i>	JF831701.1
Tunisia	<i>Ostrea stentina</i>	JF831702.1
Tunisia	<i>Ostrea stentina</i>	JF831703.1
Tunisia	<i>Ostrea stentina</i>	JF831704.1
Tunisia	<i>Ostrea stentina</i>	JF831705.1
Tunisia	<i>Ostrea stentina</i>	JF831706.1
Tunisia	<i>Ostrea stentina</i>	JF831707.1
Tunisia	<i>Ostrea stentina</i>	JF831708.1
Tunisia	<i>Ostrea stentina</i>	JF831709.1
Tunisia	<i>Ostrea stentina</i>	JF831710.1
Tunisia	<i>Ostrea stentina</i>	JF831711.1
Tunisia	<i>Ostrea stentina</i>	JF831712.1
Tunisia	<i>Ostrea stentina</i>	JF831713.1
Tunisia	<i>Ostrea stentina</i>	JF831714.1
Tunisia	<i>Ostrea stentina</i>	JF831715.1
Tunisia	<i>Ostrea stentina</i>	JF831716.1
Tunisia	<i>Ostrea stentina</i>	JF831717.1
Tunisia	<i>Ostrea stentina</i>	JF831718.1
United Kingdom	<i>Ostrea edulis</i>	MT184259.1
United Kingdom	<i>Ostrea edulis</i>	MT184260.1
United Kingdom	<i>Ostrea edulis</i>	MT184261.1
United Kingdom	<i>Ostrea edulis</i>	MT184262.1
United Kingdom	<i>Ostrea edulis</i>	MT184263.1
United Kingdom	<i>Ostrea edulis</i>	MT184264.1

Locality	Host species	Accession No.
USA: CA	<i>Crassostrea gigas</i>	PP092476
USA: CA	<i>Crassostrea gigas</i>	PP092477
USA: CA	<i>Ostrea lurida</i>	JF831719.1
USA: CA	<i>Ostrea lurida</i>	JF831720.1
USA: CA	<i>Ostrea lurida</i>	JF831721.1
USA: CA	<i>Ostrea lurida</i>	JF831722.1
USA: CA	<i>Ostrea lurida</i>	JF831723.1
USA: CA	<i>Ostrea lurida</i>	JF831724.1
USA: CA	<i>Ostrea lurida</i>	JF831725.1
USA: CA	<i>Ostrea lurida</i>	JF831726.1
USA: CA	<i>Ostrea lurida</i>	JF831727.1
USA: CA	<i>Ostrea lurida</i>	JF831728.1
USA: CA	<i>Ostrea lurida</i>	JF831729.1
USA: CA	<i>Ostrea lurida</i>	JF831730.1
USA: CA	<i>Ostrea lurida</i>	JF831731.1
USA: CA	<i>Ostrea lurida</i>	JF831732.1
USA: CA	<i>Ostrea lurida</i>	JF831733.1
USA: CA	<i>Ostrea lurida</i>	JF831734.1
USA: CA	<i>Ostrea lurida</i>	JF831735.1
USA: CA	<i>Ostrea lurida</i>	JF831736.1
USA: CA	<i>Ostrea lurida</i>	JF831737.1
USA: CA	<i>Ostrea lurida</i>	JF831738.1
USA: CA	<i>Ostrea lurida</i>	JF831739.1
USA: CA	<i>Ostrea lurida</i>	JF831740.1
USA: CA	<i>Ostrea lurida</i>	JF831741.1
USA: CA	<i>Ostrea lurida</i>	JF831742.1
USA: CA	<i>Ostrea lurida</i>	JF831743.1
USA: CA	<i>Ostrea lurida</i>	JF831744.1
USA: CA	<i>Ostrea lurida</i>	JF831745.1
USA: CA	<i>Ostrea lurida</i>	JF831746.1
USA: CA	<i>Ostrea lurida</i>	JF831747.1
USA: CA	<i>Ostrea lurida</i>	JF831748.1
USA: CA	<i>Ostrea lurida</i>	JF831749.1
USA: CA	<i>Ostrea lurida</i>	JF831750.1
USA: CA	<i>Ostrea lurida</i>	JF831751.1
USA: CA	<i>Ostrea lurida</i>	JF831752.1
USA: CA	<i>Ostrea lurida</i>	JF831753.1
USA: CA	<i>Ostrea lurida</i>	JF831754.1
USA: CA	<i>Ostrea lurida</i>	JF831755.1
USA: CA	<i>Ostrea lurida</i>	JF831756.1
USA: CA	<i>Ostrea lurida</i>	JF831757.1
USA: CA	<i>Ostrea lurida</i>	JF831758.1
USA: CA	<i>Ostrea lurida</i>	JF831759.1

Locality	Host species	Accession No.
USA: CA	<i>Ostrea lurida</i>	JF831760.1
USA: CA	<i>Ostrea lurida</i>	JF831761.1
USA: CA	<i>Ostrea lurida</i>	JF831762.1
USA: CA	<i>Ostrea lurida</i>	JF831763.1
USA: CA	<i>Ostrea lurida</i>	JF831764.1
USA: CA	<i>Ostrea lurida</i>	JF831765.1
USA: CA	<i>Ostrea lurida</i>	JF831766.1
USA: CA	<i>Ostrea lurida</i>	JF831767.1
USA: CA	<i>Ostrea lurida</i>	JF831768.1
USA: CA	<i>Ostrea lurida</i>	JF831769.1
USA: CA	<i>Ostrea lurida</i>	JF831770.1
USA: CA	<i>Ostrea lurida</i>	JF831771.1
USA: CA	<i>Ostrea lurida</i>	JF831772.1
USA: CA	<i>Ostrea lurida</i>	JF831773.1
USA: CA	<i>Ostrea lurida</i>	JF831774.1
USA: CA	<i>Ostrea lurida</i>	JF831775.1
USA: CA	<i>Ostrea lurida</i>	JF831776.1
USA: CA	<i>Ostrea lurida</i>	JF831777.1
USA: CA	<i>Ostrea lurida</i>	JF831778.1
USA: CA	<i>Ostrea lurida</i>	JF831779.1
USA: CA	<i>Ostrea lurida</i>	JF831780.1
USA: CA	<i>Ostrea lurida</i>	JF831781.1
USA: CA	<i>Ostrea lurida</i>	JF831782.1
USA: CA	<i>Ostrea lurida</i>	JF831783.1
USA: CA	<i>Ostrea lurida</i>	JF831784.1
USA: CA	<i>Ostrea lurida</i>	JF831785.1
USA: CA	<i>Ostrea lurida</i>	JF831786.1
USA: CA	<i>Ostrea lurida</i>	JF831787.1
USA: CA	<i>Ostrea lurida</i>	JF831788.1
USA: CA	<i>Ostrea lurida</i>	JF831789.1
USA: CA	<i>Ostrea lurida</i>	JF831790.1
USA: CA	<i>Ostrea lurida</i>	JF831791.1
USA: CA	<i>Ostrea lurida</i>	JF831792.1
USA: CA	<i>Ostrea lurida</i>	JF831793.1
USA: CA	<i>Ostrea lurida</i>	JF831794.1
USA: CA	<i>Ostrea lurida</i>	JF831795.1
USA: CA	<i>Ostrea lurida</i>	JF831796.1
USA: CA	<i>Ostrea lurida</i>	JF831797.1
USA: CA	<i>Ostrea lurida</i>	JF831798.1
USA: CA	<i>Ostrea lurida</i>	JF831799.1
USA: CA	<i>Ostrea lurida</i>	JF831800.1
USA: NC, SC, FL	<i>Crassostrea ariakensis</i>	JF712867.1
USA: NC, SC, FL	<i>Crassostrea ariakensis</i>	JF712868.1

Locality	Host species	Accession No.
USA: NC, SC, FL	<i>Crassostrea ariakensis</i>	JF712869.1
USA: NC, SC, FL	<i>Crassostrea ariakensis</i>	JF712870.1
USA: NC, SC, FL	<i>Crassostrea ariakensis</i>	JF712871.1
USA: NC, SC, FL	<i>Ostrea stentina</i>	JF831575.1
USA: NC, SC, FL	<i>Ostrea stentina</i>	JF831576.1
USA: NC, SC, FL	<i>Ostrea stentina</i>	JF831577.1
USA: NC, SC, FL	<i>Ostrea stentina</i>	JF831578.1
USA: NC, SC, FL	<i>Ostrea stentina</i>	JF831579.1
USA: NC, SC, FL	<i>Ostrea stentina</i>	JF831580.1
USA: NC, SC, FL	<i>Ostrea stentina</i>	JF831581.1
USA: NC, SC, FL	<i>Ostrea stentina</i>	JF831582.1
USA: NC, SC, FL	<i>Ostrea stentina</i>	JF831583.1
USA: NC, SC, FL	<i>Ostrea stentina</i>	JF831584.1
USA: NC, SC, FL	<i>Ostrea stentina</i>	JF831585.1
USA: NC, SC, FL	<i>Ostrea stentina</i>	JF831586.1
USA: NC, SC, FL	<i>Ostrea stentina</i>	JF831587.1
USA: NC, SC, FL	<i>Ostrea stentina</i>	JF831588.1
USA: NC, SC, FL	<i>Ostrea stentina</i>	JF831589.1
USA: NC, SC, FL	<i>Ostrea stentina</i>	JF831590.1
USA: NC, SC, FL	<i>Ostrea stentina</i>	JF831591.1
USA: NC, SC, FL	<i>Ostrea stentina</i>	JF831592.1
USA: NC, SC, FL	<i>Ostrea stentina</i>	JF831593.1
USA: NC, SC, FL	<i>Ostrea stentina</i>	JF831594.1
USA: NC, SC, FL	<i>Ostrea stentina</i>	JF831595.1
USA: NC, SC, FL	<i>Ostrea stentina</i>	JF831596.1
USA: NC, SC, FL	<i>Ostrea stentina</i>	JF831597.1
USA: NC, SC, FL	<i>Ostrea stentina</i>	JF831598.1
USA: NC, SC, FL	<i>Ostrea stentina</i>	JF831599.1
USA: NC, SC, FL	<i>Ostrea stentina</i>	JF831600.1
USA: NC, SC, FL	<i>Ostrea stentina</i>	JF831601.1
USA: NC, SC, FL	<i>Ostrea stentina</i>	JF831602.1
USA: NC, SC, FL	<i>Ostrea stentina</i>	JF831686.1
(B)		
Argentina	<i>Ostrea puelchana</i>	JF831603.1
Argentina	<i>Ostrea puelchana</i>	JF831604.1
Argentina	<i>Ostrea puelchana</i>	JF831605.1
Argentina	<i>Ostrea puelchana</i>	JF831606.1
Argentina	<i>Ostrea puelchana</i>	JF831607.1
Argentina	<i>Ostrea puelchana</i>	JF831608.1
Argentina	<i>Ostrea puelchana</i>	JF831609.1
Argentina	<i>Ostrea puelchana</i>	JF831610.1
Argentina	<i>Ostrea puelchana</i>	JF831611.1
Argentina	<i>Ostrea puelchana</i>	JF831612.1

Locality	Host species	Accession No.
Argentina	<i>Ostrea puelchana</i>	JF831613.1
Argentina	<i>Ostrea puelchana</i>	JF831614.1
Argentina	<i>Ostrea puelchana</i>	JF831615.1
Argentina	<i>Ostrea puelchana</i>	JF831616.1
Argentina	<i>Ostrea puelchana</i>	JF831617.1
Argentina	<i>Ostrea puelchana</i>	JF831618.1
Argentina	<i>Ostrea puelchana</i>	JF831619.1
Argentina	<i>Ostrea puelchana</i>	JF831620.1
Argentina	<i>Ostrea puelchana</i>	JF831621.1
Argentina	<i>Ostrea puelchana</i>	JF831622.1
Argentina	<i>Ostrea puelchana</i>	JF831623.1
Argentina	<i>Ostrea puelchana</i>	JF831624.1
Argentina	<i>Ostrea puelchana</i>	JF831625.1
Argentina	<i>Ostrea puelchana</i>	JF831626.1
Argentina	<i>Ostrea puelchana</i>	JF831627.1
Argentina	<i>Ostrea puelchana</i>	JF831628.1
Argentina	<i>Ostrea puelchana</i>	JF831629.1
Argentina	<i>Ostrea puelchana</i>	JF831630.1
Argentina	<i>Ostrea puelchana</i>	JF831631.1
Argentina	<i>Ostrea puelchana</i>	JF831632.1
Argentina	<i>Ostrea puelchana</i>	JF831633.1
Argentina	<i>Ostrea puelchana</i>	JF831634.1
Argentina	<i>Ostrea puelchana</i>	JF831635.1
Argentina	<i>Ostrea puelchana</i>	JF831636.1
Argentina	<i>Ostrea puelchana</i>	JF831637.1
Argentina	<i>Ostrea puelchana</i>	JF831638.1
Argentina	<i>Ostrea stentina</i>	JF831556.1
Argentina	<i>Ostrea stentina</i>	JF831557.1
Argentina	<i>Ostrea stentina</i>	JF831558.1
Argentina	<i>Ostrea stentina</i>	JF831559.1
Argentina	<i>Ostrea stentina</i>	JF831560.1
Argentina	<i>Ostrea stentina</i>	JF831561.1
Argentina	<i>Ostrea stentina</i>	JF831562.1
Argentina	<i>Ostrea stentina</i>	JF831563.1
Argentina	<i>Ostrea stentina</i>	JF831564.1
Argentina	<i>Ostrea stentina</i>	JF831565.1
Argentina	<i>Ostrea stentina</i>	JF831566.1
Argentina	<i>Ostrea stentina</i>	JF831567.1
Argentina	<i>Ostrea stentina</i>	JF831568.1
Argentina	<i>Ostrea stentina</i>	JF831569.1
Argentina	<i>Ostrea stentina</i>	JF831570.1
Argentina	<i>Ostrea stentina</i>	JF831571.1
Argentina	<i>Ostrea stentina</i>	JF831572.1

Locality	Host species	Accession No.
Argentina	<i>Ostrea stentina</i>	JF831573.1
Argentina	<i>Ostrea stentina</i>	JF831574.1
Australia	<i>Ostrea angasi</i>	JF831678.1
Australia	<i>Ostrea angasi</i>	JF831679.1
Australia	<i>Ostrea angasi</i>	JF831680.1
Australia	<i>Saccostrea glomerata</i>	JF831681.1
Australia	<i>Saccostrea glomerata</i>	JF831682.1
Australia	<i>Saccostrea glomerata</i>	JF831683.1
Australia	<i>Saccostrea glomerata</i>	JF831684.1
New Zealand	<i>Ostrea chilensis</i>	JF831639.1
New Zealand	<i>Ostrea chilensis</i>	JF831640.1
New Zealand	<i>Ostrea chilensis</i>	JF831641.1
New Zealand	<i>Ostrea chilensis</i>	JF831642.1
New Zealand	<i>Ostrea chilensis</i>	JF831643.1
New Zealand	<i>Ostrea chilensis</i>	JF831644.1
New Zealand	<i>Ostrea chilensis</i>	JF831645.1
New Zealand	<i>Ostrea chilensis</i>	JF831646.1
New Zealand	<i>Ostrea chilensis</i>	JF831647.1
New Zealand	<i>Ostrea chilensis</i>	JF831648.1
New Zealand	<i>Ostrea chilensis</i>	JF831649.1
New Zealand	<i>Ostrea chilensis</i>	JF831650.1
New Zealand	<i>Ostrea chilensis</i>	JF831651.1
New Zealand	<i>Ostrea chilensis</i>	JF831652.1
New Zealand	<i>Ostrea chilensis</i>	JF831653.1
New Zealand	<i>Ostrea chilensis</i>	JF831654.1
New Zealand	<i>Ostrea chilensis</i>	JF831655.1
New Zealand	<i>Ostrea chilensis</i>	JF831656.1
New Zealand	<i>Ostrea chilensis</i>	JF831657.1
New Zealand	<i>Ostrea chilensis</i>	KY680577.1
New Zealand	<i>Ostrea chilensis</i>	KY680578.1
New Zealand	<i>Ostrea chilensis</i>	KY680579.1
New Zealand	<i>Ostrea chilensis</i>	KY680580.1
New Zealand	<i>Ostrea chilensis</i>	KY680581.1
New Zealand	<i>Ostrea chilensis</i>	KY680582.1
New Zealand	<i>Ostrea chilensis</i>	KY680583.1
New Zealand	<i>Ostrea chilensis</i>	KY680584.1
New Zealand	<i>Ostrea chilensis</i>	KY680585.1
New Zealand	<i>Ostrea chilensis</i>	KY680586.1
New Zealand	<i>Ostrea chilensis</i>	KY680587.1
New Zealand	<i>Ostrea chilensis</i>	KY680588.1
New Zealand	<i>Ostrea chilensis</i>	KY680589.1
New Zealand	<i>Ostrea chilensis</i>	KY680590.1
New Zealand	<i>Ostrea chilensis</i>	KY680591.1

Locality	Host species	Accession No.
New Zealand	<i>Ostrea chilensis</i>	KY680592.1
New Zealand	<i>Ostrea chilensis</i>	KY680593.1
New Zealand	<i>Ostrea chilensis</i>	KY680594.1
New Zealand	<i>Ostrea chilensis</i>	KY680595.1
New Zealand	<i>Ostrea chilensis</i>	KY680596.1
New Zealand	<i>Ostrea chilensis</i>	KY680597.1
New Zealand	<i>Ostrea chilensis</i>	KY680598.1
New Zealand	<i>Ostrea chilensis</i>	KY680599.1
New Zealand	<i>Ostrea chilensis</i>	KY680600.1
New Zealand	<i>Ostrea chilensis</i>	KY680601.1
New Zealand	<i>Ostrea chilensis</i>	KY680602.1
New Zealand	<i>Ostrea chilensis</i>	KY680603.1
New Zealand	<i>Ostrea chilensis</i>	KY680604.1
New Zealand	<i>Ostrea chilensis</i>	KY680605.1
New Zealand	<i>Ostrea chilensis</i>	KY680606.1
New Zealand	<i>Ostrea chilensis</i>	KY680607.1
New Zealand	<i>Ostrea chilensis</i>	KY680608.1
New Zealand	<i>Ostrea chilensis</i>	KY680609.1
New Zealand	<i>Ostrea chilensis</i>	KY680610.1
New Zealand	<i>Ostrea chilensis</i>	KY680611.1
New Zealand	<i>Ostrea chilensis</i>	KY680612.1
New Zealand	<i>Ostrea chilensis</i>	KY680613.1
New Zealand	<i>Ostrea chilensis</i>	KY680614.1
New Zealand	<i>Ostrea chilensis</i>	KY680615.1
New Zealand	<i>Ostrea chilensis</i>	KY680616.1
New Zealand	<i>Ostrea chilensis</i>	KY680617.1
New Zealand	<i>Ostrea chilensis</i>	KY680618.1
New Zealand	<i>Ostrea chilensis</i>	KY680619.1
New Zealand	<i>Ostrea chilensis</i>	KY680620.1
New Zealand	<i>Ostrea chilensis</i>	KY680621.1
New Zealand	<i>Ostrea chilensis</i>	KY680622.1
New Zealand	<i>Ostrea chilensis</i>	KY680623.1
New Zealand	<i>Ostrea chilensis</i>	KY680624.1
New Zealand	<i>Ostrea chilensis</i>	KY680625.1
New Zealand	<i>Ostrea chilensis</i>	KY680626.1
New Zealand	<i>Ostrea chilensis</i>	KY680627.1
New Zealand	<i>Ostrea chilensis</i>	KY680628.1
New Zealand	<i>Ostrea chilensis</i>	KY680629.1
New Zealand	<i>Ostrea chilensis</i>	KY680630.1
New Zealand	<i>Ostrea chilensis</i>	KY680631.1
New Zealand	<i>Ostrea chilensis</i>	KY680632.1
New Zealand	<i>Ostrea chilensis</i>	KY680633.1
New Zealand	<i>Ostrea chilensis</i>	KY680634.1

Locality	Host species	Accession No.
New Zealand	<i>Ostrea chilensis</i>	KY680635.1
New Zealand	<i>Ostrea chilensis</i>	KY680636.1
New Zealand	<i>Ostrea chilensis</i>	KY680637.1
New Zealand	<i>Ostrea chilensis</i>	KY680638.1
New Zealand	<i>Ostrea chilensis</i>	KY680639.1
New Zealand	<i>Ostrea chilensis</i>	KY680640.1
New Zealand	<i>Ostrea chilensis</i>	KY680641.1
New Zealand	<i>Ostrea chilensis</i>	KY680642.1
New Zealand	<i>Ostrea chilensis</i>	KY680643.1
New Zealand	<i>Ostrea chilensis</i>	KY680644.1
New Zealand	<i>Ostrea chilensis</i>	KY680645.1
New Zealand	<i>Ostrea stentina</i>	JF831658.1
New Zealand	<i>Ostrea stentina</i>	JF831659.1
New Zealand	<i>Ostrea stentina</i>	JF831660.1
New Zealand	<i>Ostrea stentina</i>	JF831661.1
New Zealand	<i>Ostrea stentina</i>	JF831662.1
New Zealand	<i>Ostrea stentina</i>	JF831663.1
New Zealand	<i>Ostrea stentina</i>	JF831664.1
New Zealand	<i>Ostrea stentina</i>	JF831665.1
New Zealand	<i>Ostrea stentina</i>	JF831666.1
New Zealand	<i>Ostrea stentina</i>	JF831667.1
New Zealand	<i>Ostrea stentina</i>	JF831668.1
New Zealand	<i>Ostrea stentina</i>	JF831669.1
New Zealand	<i>Ostrea stentina</i>	JF831670.1
New Zealand	<i>Ostrea stentina</i>	JF831671.1
New Zealand	<i>Ostrea stentina</i>	JF831672.1
New Zealand	<i>Ostrea stentina</i>	JF831673.1
New Zealand	<i>Ostrea stentina</i>	JF831674.1
New Zealand	<i>Ostrea stentina</i>	JF831675.1
New Zealand	<i>Ostrea stentina</i>	JF831676.1
New Zealand	<i>Ostrea stentina</i>	JF831677.1
Tunisia	<i>Ostrea stentina</i>	JF831685.1
Tunisia	<i>Ostrea stentina</i>	JF831687.1
Tunisia	<i>Ostrea stentina</i>	JF831688.1
Tunisia	<i>Ostrea stentina</i>	JF831689.1
Tunisia	<i>Ostrea stentina</i>	JF831690.1
Tunisia	<i>Ostrea stentina</i>	JF831691.1
Tunisia	<i>Ostrea stentina</i>	JF831692.1
Tunisia	<i>Ostrea stentina</i>	JF831693.1
Tunisia	<i>Ostrea stentina</i>	JF831694.1
Tunisia	<i>Ostrea stentina</i>	JF831695.1
Tunisia	<i>Ostrea stentina</i>	JF831696.1
Tunisia	<i>Ostrea stentina</i>	JF831697.1

Locality	Host species	Accession No.
Tunisia	<i>Ostrea stentina</i>	JF831698.1
Tunisia	<i>Ostrea stentina</i>	JF831699.1
Tunisia	<i>Ostrea stentina</i>	JF831700.1
Tunisia	<i>Ostrea stentina</i>	JF831701.1
Tunisia	<i>Ostrea stentina</i>	JF831702.1
Tunisia	<i>Ostrea stentina</i>	JF831703.1
Tunisia	<i>Ostrea stentina</i>	JF831704.1
Tunisia	<i>Ostrea stentina</i>	JF831705.1
Tunisia	<i>Ostrea stentina</i>	JF831706.1
Tunisia	<i>Ostrea stentina</i>	JF831707.1
Tunisia	<i>Ostrea stentina</i>	JF831708.1
Tunisia	<i>Ostrea stentina</i>	JF831709.1
Tunisia	<i>Ostrea stentina</i>	JF831710.1
Tunisia	<i>Ostrea stentina</i>	JF831711.1
Tunisia	<i>Ostrea stentina</i>	JF831712.1
Tunisia	<i>Ostrea stentina</i>	JF831713.1
Tunisia	<i>Ostrea stentina</i>	JF831714.1
Tunisia	<i>Ostrea stentina</i>	JF831715.1
Tunisia	<i>Ostrea stentina</i>	JF831716.1
Tunisia	<i>Ostrea stentina</i>	JF831717.1
Tunisia	<i>Ostrea stentina</i>	JF831718.1
USA: CA	<i>Crassostrea gigas</i>	PP092476
USA: CA	<i>Crassostrea gigas</i>	PP092477
USA: CA	<i>Ostrea lurida</i>	JF831719.1
USA: CA	<i>Ostrea lurida</i>	JF831720.1
USA: CA	<i>Ostrea lurida</i>	JF831721.1
USA: CA	<i>Ostrea lurida</i>	JF831722.1
USA: CA	<i>Ostrea lurida</i>	JF831723.1
USA: CA	<i>Ostrea lurida</i>	JF831724.1
USA: CA	<i>Ostrea lurida</i>	JF831725.1
USA: CA	<i>Ostrea lurida</i>	JF831726.1
USA: CA	<i>Ostrea lurida</i>	JF831727.1
USA: CA	<i>Ostrea lurida</i>	JF831728.1
USA: CA	<i>Ostrea lurida</i>	JF831729.1
USA: CA	<i>Ostrea lurida</i>	JF831730.1
USA: CA	<i>Ostrea lurida</i>	JF831731.1
USA: CA	<i>Ostrea lurida</i>	JF831732.1
USA: CA	<i>Ostrea lurida</i>	JF831733.1
USA: CA	<i>Ostrea lurida</i>	JF831734.1
USA: CA	<i>Ostrea lurida</i>	JF831735.1
USA: CA	<i>Ostrea lurida</i>	JF831736.1
USA: CA	<i>Ostrea lurida</i>	JF831737.1
USA: CA	<i>Ostrea lurida</i>	JF831738.1

Locality	Host species	Accession No.
USA: CA	<i>Ostrea lurida</i>	JF831739.1
USA: CA	<i>Ostrea lurida</i>	JF831740.1
USA: CA	<i>Ostrea lurida</i>	JF831741.1
USA: CA	<i>Ostrea lurida</i>	JF831742.1
USA: CA	<i>Ostrea lurida</i>	JF831743.1
USA: CA	<i>Ostrea lurida</i>	JF831744.1
USA: CA	<i>Ostrea lurida</i>	JF831745.1
USA: CA	<i>Ostrea lurida</i>	JF831746.1
USA: CA	<i>Ostrea lurida</i>	JF831747.1
USA: CA	<i>Ostrea lurida</i>	JF831748.1
USA: CA	<i>Ostrea lurida</i>	JF831749.1
USA: CA	<i>Ostrea lurida</i>	JF831750.1
USA: CA	<i>Ostrea lurida</i>	JF831751.1
USA: CA	<i>Ostrea lurida</i>	JF831752.1
USA: CA	<i>Ostrea lurida</i>	JF831753.1
USA: CA	<i>Ostrea lurida</i>	JF831754.1
USA: CA	<i>Ostrea lurida</i>	JF831755.1
USA: CA	<i>Ostrea lurida</i>	JF831756.1
USA: CA	<i>Ostrea lurida</i>	JF831757.1
USA: CA	<i>Ostrea lurida</i>	JF831758.1
USA: CA	<i>Ostrea lurida</i>	JF831759.1
USA: CA	<i>Ostrea lurida</i>	JF831760.1
USA: CA	<i>Ostrea lurida</i>	JF831761.1
USA: CA	<i>Ostrea lurida</i>	JF831762.1
USA: CA	<i>Ostrea lurida</i>	JF831763.1
USA: CA	<i>Ostrea lurida</i>	JF831764.1
USA: CA	<i>Ostrea lurida</i>	JF831765.1
USA: CA	<i>Ostrea lurida</i>	JF831766.1
USA: CA	<i>Ostrea lurida</i>	JF831767.1
USA: CA	<i>Ostrea lurida</i>	JF831768.1
USA: CA	<i>Ostrea lurida</i>	JF831769.1
USA: CA	<i>Ostrea lurida</i>	JF831770.1
USA: CA	<i>Ostrea lurida</i>	JF831771.1
USA: CA	<i>Ostrea lurida</i>	JF831772.1
USA: CA	<i>Ostrea lurida</i>	JF831773.1
USA: CA	<i>Ostrea lurida</i>	JF831774.1
USA: CA	<i>Ostrea lurida</i>	JF831775.1
USA: CA	<i>Ostrea lurida</i>	JF831776.1
USA: CA	<i>Ostrea lurida</i>	JF831777.1
USA: CA	<i>Ostrea lurida</i>	JF831778.1
USA: CA	<i>Ostrea lurida</i>	JF831779.1
USA: CA	<i>Ostrea lurida</i>	JF831780.1
USA: CA	<i>Ostrea lurida</i>	JF831781.1

Locality	Host species	Accession No.
USA: CA	<i>Ostrea lurida</i>	JF831782.1
USA: CA	<i>Ostrea lurida</i>	JF831783.1
USA: CA	<i>Ostrea lurida</i>	JF831784.1
USA: CA	<i>Ostrea lurida</i>	JF831785.1
USA: CA	<i>Ostrea lurida</i>	JF831786.1
USA: CA	<i>Ostrea lurida</i>	JF831787.1
USA: CA	<i>Ostrea lurida</i>	JF831788.1
USA: CA	<i>Ostrea lurida</i>	JF831789.1
USA: CA	<i>Ostrea lurida</i>	JF831790.1
USA: CA	<i>Ostrea lurida</i>	JF831791.1
USA: CA	<i>Ostrea lurida</i>	JF831792.1
USA: CA	<i>Ostrea lurida</i>	JF831793.1
USA: CA	<i>Ostrea lurida</i>	JF831794.1
USA: CA	<i>Ostrea lurida</i>	JF831795.1
USA: CA	<i>Ostrea lurida</i>	JF831796.1
USA: CA	<i>Ostrea lurida</i>	JF831797.1
USA: CA	<i>Ostrea lurida</i>	JF831798.1
USA: CA	<i>Ostrea lurida</i>	JF831799.1
USA: CA	<i>Ostrea lurida</i>	JF831800.1
USA: FL, NC, SC	<i>Crassostrea ariakensis</i>	JF712867.1
USA: FL, NC, SC	<i>Crassostrea ariakensis</i>	JF712868.1
USA: FL, NC, SC	<i>Crassostrea ariakensis</i>	JF712869.1
USA: FL, NC, SC	<i>Crassostrea ariakensis</i>	JF712870.1
USA: FL, NC, SC	<i>Crassostrea ariakensis</i>	JF712871.1
USA: FL, NC, SC	<i>Ostrea stentina</i>	JF831575.1
USA: FL, NC, SC	<i>Ostrea stentina</i>	JF831576.1
USA: FL, NC, SC	<i>Ostrea stentina</i>	JF831577.1
USA: FL, NC, SC	<i>Ostrea stentina</i>	JF831578.1
USA: FL, NC, SC	<i>Ostrea stentina</i>	JF831579.1
USA: FL, NC, SC	<i>Ostrea stentina</i>	JF831580.1
USA: FL, NC, SC	<i>Ostrea stentina</i>	JF831581.1
USA: FL, NC, SC	<i>Ostrea stentina</i>	JF831582.1
USA: FL, NC, SC	<i>Ostrea stentina</i>	JF831583.1
USA: FL, NC, SC	<i>Ostrea stentina</i>	JF831584.1
USA: FL, NC, SC	<i>Ostrea stentina</i>	JF831585.1
USA: FL, NC, SC	<i>Ostrea stentina</i>	JF831586.1
USA: FL, NC, SC	<i>Ostrea stentina</i>	JF831587.1
USA: FL, NC, SC	<i>Ostrea stentina</i>	JF831588.1
USA: FL, NC, SC	<i>Ostrea stentina</i>	JF831589.1
USA: FL, NC, SC	<i>Ostrea stentina</i>	JF831590.1
USA: FL, NC, SC	<i>Ostrea stentina</i>	JF831591.1
USA: FL, NC, SC	<i>Ostrea stentina</i>	JF831592.1
USA: FL, NC, SC	<i>Ostrea stentina</i>	JF831593.1

Locality	Host species	Accession No.
USA: FL, NC, SC	<i>Ostrea stentina</i>	JF831594.1
USA: FL, NC, SC	<i>Ostrea stentina</i>	JF831595.1
USA: FL, NC, SC	<i>Ostrea stentina</i>	JF831596.1
USA: FL, NC, SC	<i>Ostrea stentina</i>	JF831597.1
USA: FL, NC, SC	<i>Ostrea stentina</i>	JF831598.1
USA: FL, NC, SC	<i>Ostrea stentina</i>	JF831599.1
USA: FL, NC, SC	<i>Ostrea stentina</i>	JF831600.1
USA: FL, NC, SC	<i>Ostrea stentina</i>	JF831601.1
USA: FL, NC, SC	<i>Ostrea stentina</i>	JF831602.1
USA: FL, NC, SC	<i>Ostrea stentina</i>	JF831686.1

Supplemental Figure

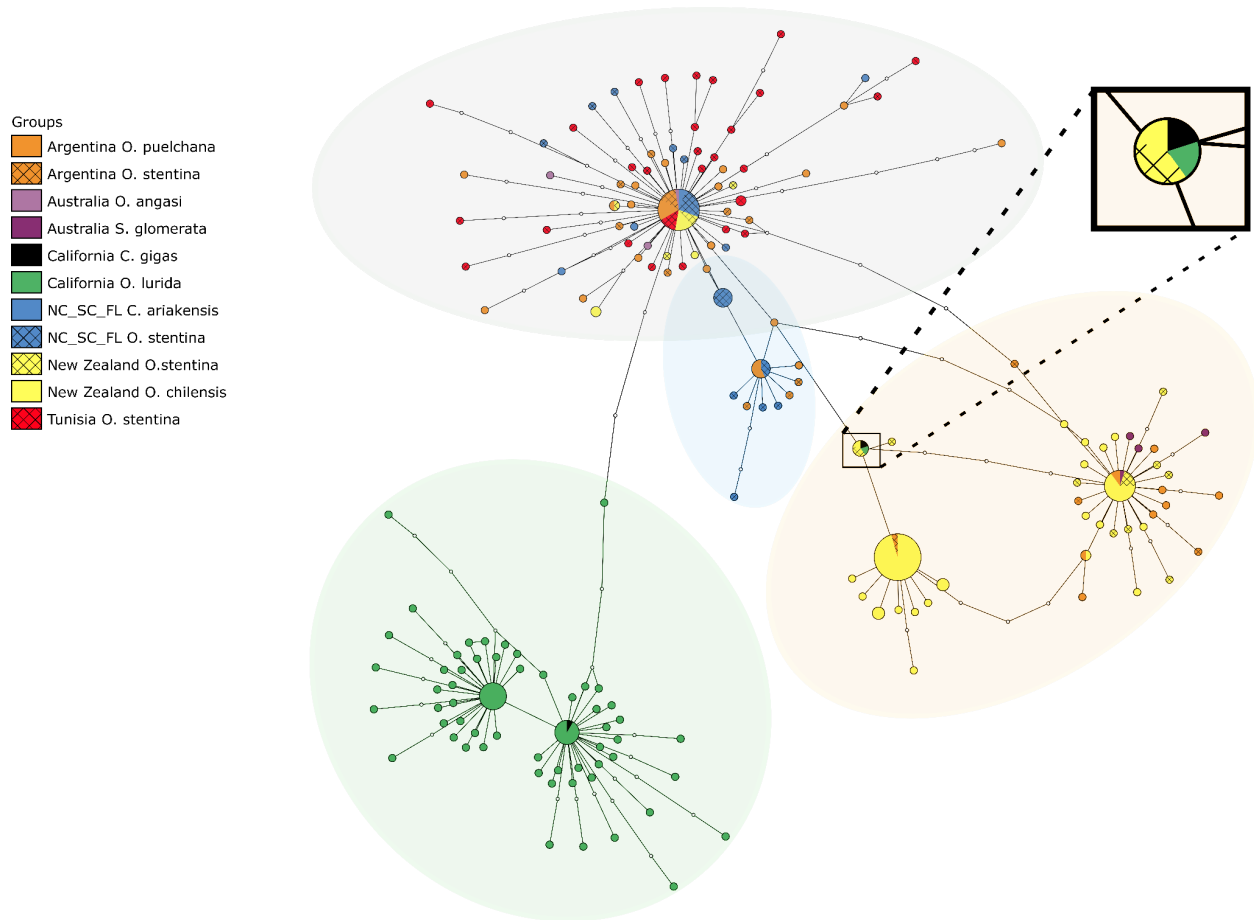


Figure S1. TCS network based a 489-base pair alignment of 321 *Bonamia exitiosa* internal transcribed spacer region ribosomal RNA gene sequences, which resulted in 173 haplotypes. Cross-patterns indicate species within the *Ostrea stentina* species complex across its broad geographical range.

LITERATURE CITED

- Abollo E, Ramilo A, Casas SM, Comesaña P, Cao A, Carballal MJ, Villalba A (2008) First detection of the protozoan parasite *Bonamia exitiosa* (Haplosporidia) infecting flat oyster *Ostrea edulis* grown in European waters. *Aquaculture* 274:201–207 <https://doi.org/10.1016/j.aquaculture.2007.11.037>
- Arzul I, Miossec L, Blanchet E, Garcia C, François C, Joly JP (2006) *Bonamia ostreae* and *Ostrea edulis*: a stable host–parasite system in France? Presentation at the 11th Int Symp Vet Epidemiol Econ, Cairns, 6–11 August 2006
- Burreson EM, Stokes NA, Carnegie RB, Bishop MJ (2004) *Bonamia* sp. (Haplosporidia) found in nonnative oysters *Crassostrea ariakensis* in Bogue Sound, North Carolina. *J Aquat Anim Health* 16:1–9 <https://doi.org/10.1577/H03-008.1>
- CABI (2022) Bonamiosis (*Bonamia ostreae*). CABI Compend 2022:91590
- Carrasco N, Villalba A, Andree KB, Engelsma MY and others (2012) *Bonamia exitiosa* (Haplosporidia) observed infecting the European flat oyster *Ostrea edulis* cultured on the Spanish Mediterranean coast. *J Invertebr Pathol* 110:307–313 <https://doi.org/10.1016/j.jip.2012.03.015>
- Cranfield HJ, Dunn A, Doonan IJ, Michael KP (2005) *Bonamia exitiosa* epizootic in *Ostrea chilensis* from Foveaux Strait, southern New Zealand between 1986 and 1992. *ICES J Mar Sci* 62:3–13 <https://doi.org/10.1016/j.icesjms.2004.06.021>
- Culloty SC, Mulcahy MF (1996) Season-, age-, and sex-related variations in the prevalence of bonamiasis in flat oyster (*Ostrea edulis* L.) on the south coast of Ireland. *Aquaculture* 144:53–63 [https://doi.org/10.1016/S0044-8486\(96\)01290-2](https://doi.org/10.1016/S0044-8486(96)01290-2)
- Elston RA, Farley CA, Kent ML (1986) Occurrence and significance of bonamiasis in European flat oysters *Ostrea edulis* in North America. *Dis Aquat Org* 2:49–54 <https://doi.org/10.3354/dao002049>
- Gouletquer P, Bachelet G, Sauriau PG, Noel P (2002) Open Atlantic coast of Europe—a century of introduced species into French waters. In: Leppäkoski E, Gollasch S, Olenin S (eds) *Invasive aquatic species of Europe: distribution, impacts and management*. Kluwer, Dordrecht, p 276–290 https://doi.org/10.1007/978-94-015-9956-6_30
- Hill KM, Stokes NA, Webb SC, Hine PM and others (2014) Phylogenetics of *Bonamia* parasites based on small subunit and internal transcribed spacer region ribosomal DNA sequence data. *Dis Aquat Org* 110:33–54 <https://doi.org/10.3354/dao02738>
- Lane HS, Webb SC, Duncan J (2016) *Bonamia ostreae* in the New Zealand oyster *Ostrea chilensis*: a new host and geographic record for this haplosporidian parasite. *Dis Aquat Org* 118:55–63 <https://doi.org/10.3354/dao02960>
- Madsen L, Thomassen HEH (2015) First detection of *Bonamia ostreae* in native flat oysters from the Limfjord in Denmark. In: 17th Int Conf Dis Fish Shellfish abstract book. Article O-084, European Association of Fish Pathologists, Las Palmas de Gran Canaria, p 92
- Marty GD, Bower SM, Clarke KR, Meyer G and others (2006) Histopathology and a real-time PCR assay for detection of *Bonamia ostreae* in *Ostrea edulis* cultured in western Canada. *Aquaculture* 261:33–42 <https://doi.org/10.1016/j.aquaculture.2006.07.024>
- Montes J, Ferro-Soto B, Conchas RF, Guerra AM (2003) Determining culture strategies in populations of the European flat oyster, *Ostrea edulis*, affected by bonamiosis. *Aquaculture* 220:175–182 [https://doi.org/10.1016/S0044-8486\(02\)00628-2](https://doi.org/10.1016/S0044-8486(02)00628-2)
- Pascual M, Martin AG, Zampatti E, Coatanea D, Defossez J, Robert R (1991) Testing of the Argentina oyster, *Ostrea puelchana*, in several French oyster farming sites. *ICES CM* 1991/K:30
- Sas H, Deden B, Kamermans P, zu Ermgassen PSE and others (2020) *Bonamia* infection in flat oysters (*Ostrea edulis*) in relation to European restoration projects. *Aquat Conserv* 30:2150–2162 <https://doi.org/10.1002/aqc.3430>