

SUPPLEMENT

Shy albatross (*Thalassarche cauta*) chick mortality and heat stress in a temperate climate.

Supplement 1: CRAGS further information

Video showing chick death captured with CRAGS camera: https://github.com/clairemas0n/hot-chicks/blob/main/gigapan_chickdies_parentabsence%20.wmv

The only known predators of shy albatross on Albatross Island are native, white-bellied sea eagles (*Haliaeetus leucogaster*) which on rare occasions have been observed scavenging deceased chicks (Figure S1.1). However, no live predation has been observed and it is not considered a likely significant cause of mortality for shy albatross on Albatross Island.



Figure S1. Scavenging of dead shy albatross chick by suspected juvenile white-bellied sea eagle captured by CRAGS remote camera.

Supplement 2: Further analysis of data collected from weather stations.

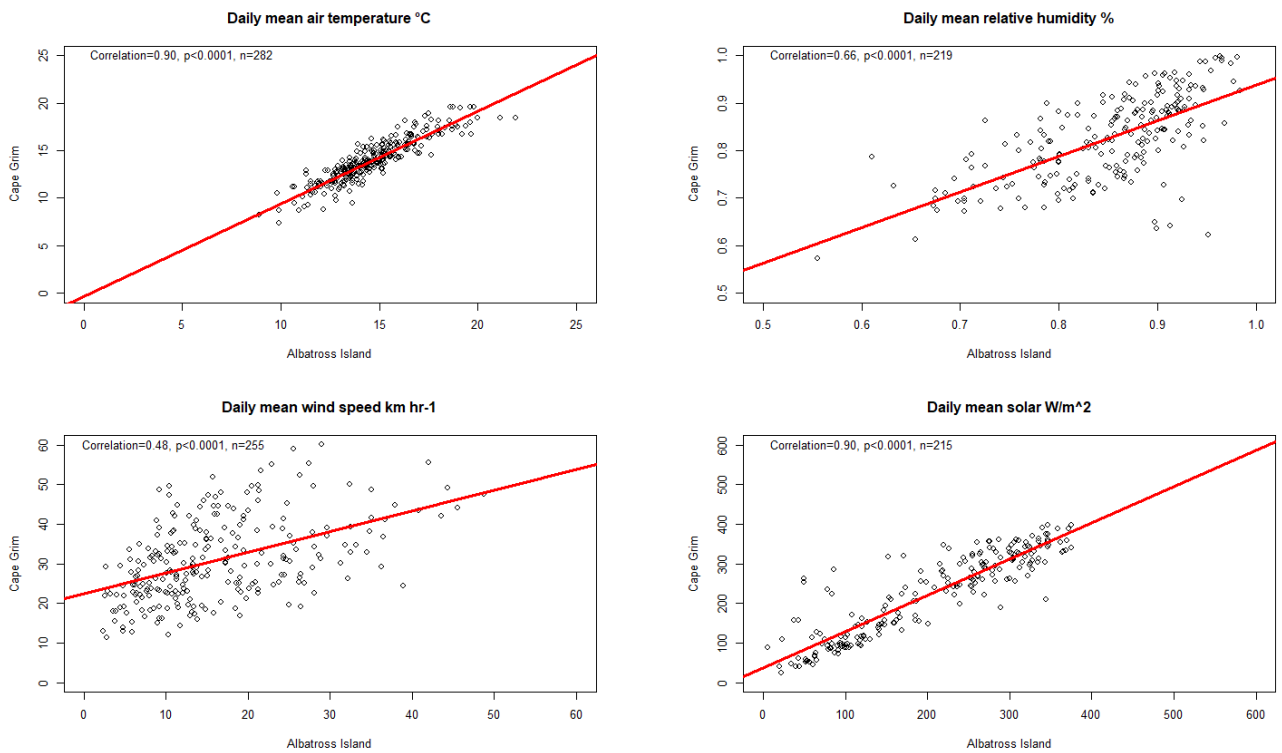


Figure S2. Correlation matrix between the daily means of four meteorological variables relevant to heat stress recorded from remote Cape Grim station and local Albatross Island station.