

*The following supplement accompanies the article*

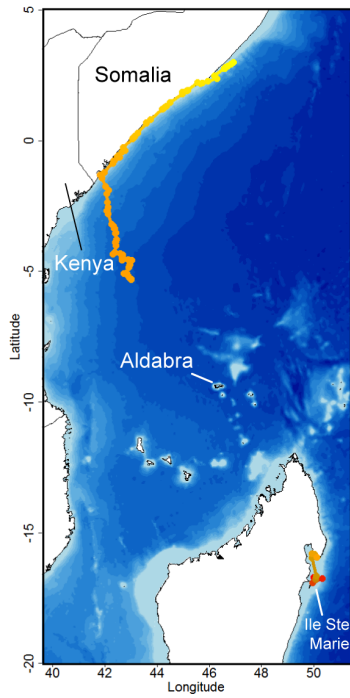
## **Satellite telemetry of humpback whales off Madagascar reveals insights on breeding behavior and long-range movements within the Southwest Indian Ocean**

**Salvatore Cerchio\*, Laurène Trudelle, Alexandre N. Zerbini, Jean-Benoit Charrassin, Ygor Geyer, Francois Xavier Mayer, Norbert Andrianarivelo, Jean-Luc Jung, Olivier Adam, Howard C. Rosenbaum**

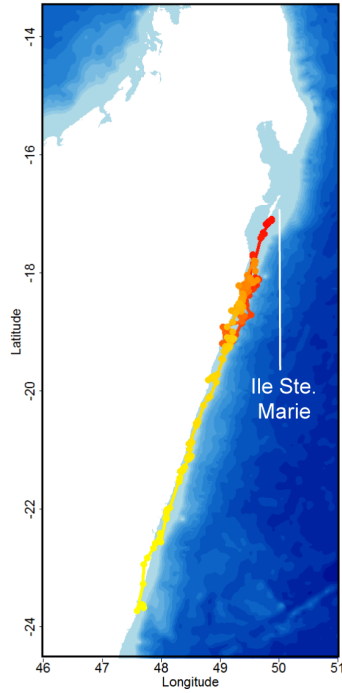
\*Corresponding author: [scerchio@neaq.org](mailto:scerchio@neaq.org)

*Marine Ecology Progress Series 562: 193–209 (2016)*

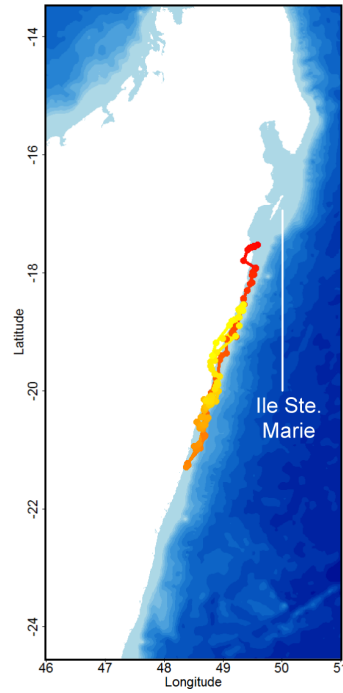
---



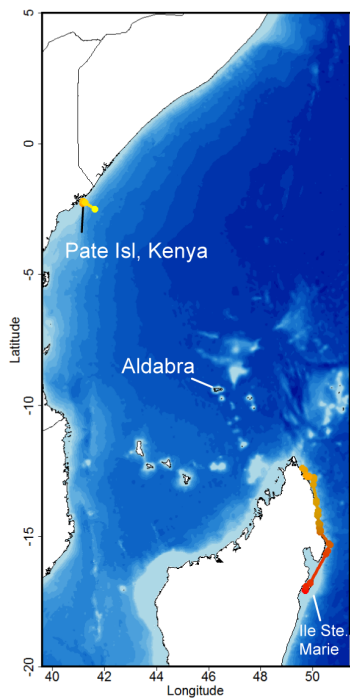
A. Tag 1 – M, Solo



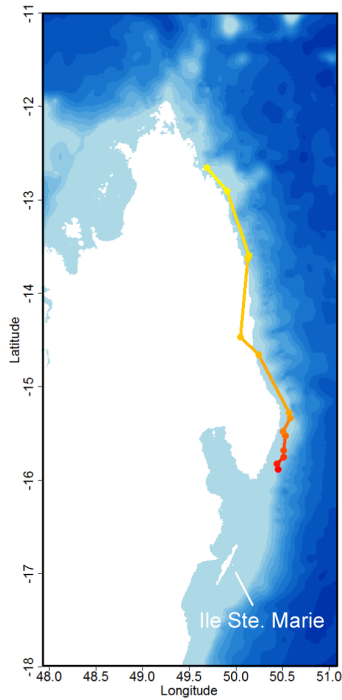
B. Tag 2 – M, in CG



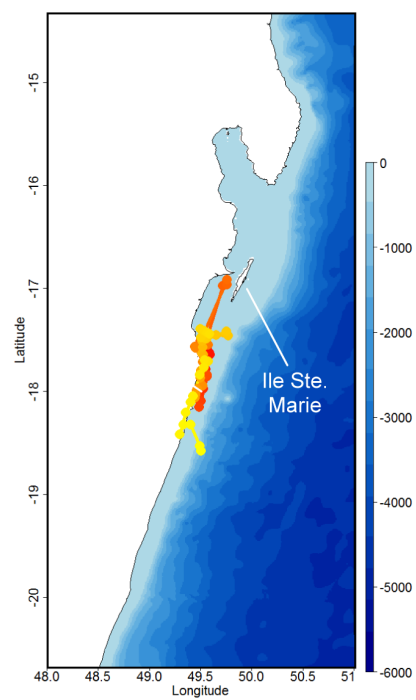
C. Tag 3 – M, in Pair



D. Tag 4 – F, Mother

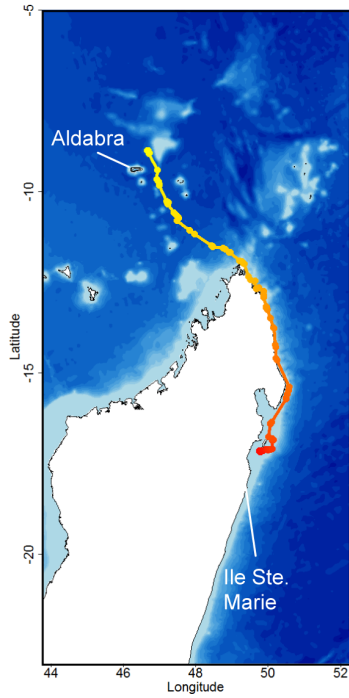


E. Tag 5 – M, Esc

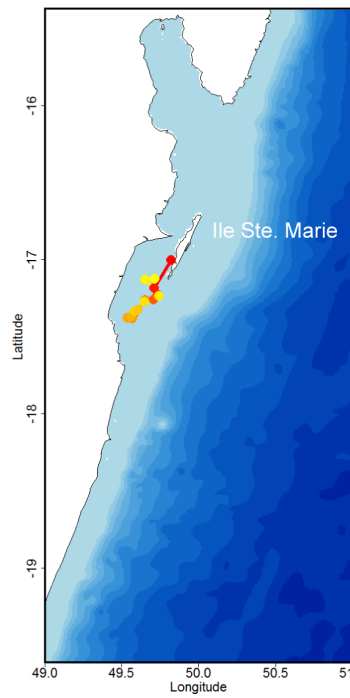


F. Tag 6 – M, in Pair

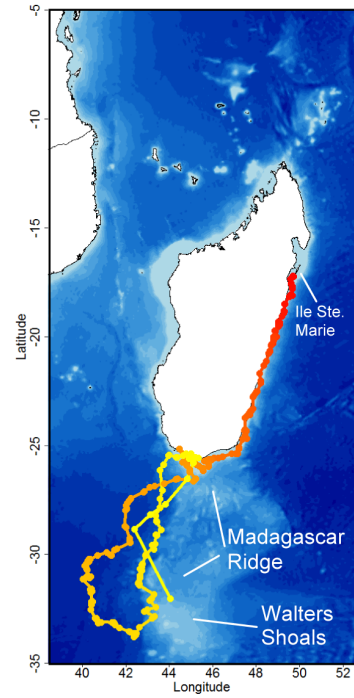
Fig. S1. Tracks for each humpback whale satellite tagged off Madagascar: Tags 1–12 from Ile Ste. Marie in the northeast, and Tags 13–23 from Anakao in the southwest. Each location is represented by a dot with a line connecting temporally consecutive locations (legs); locations on land due to location error have not been removed. Temporal progression is represented with a continuous color gradient, from the first initial location in red to the final location with last tag transmission in yellow



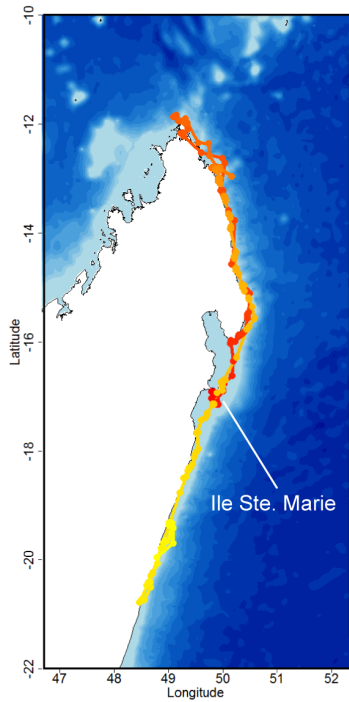
G. Tag 7 – F, Mother



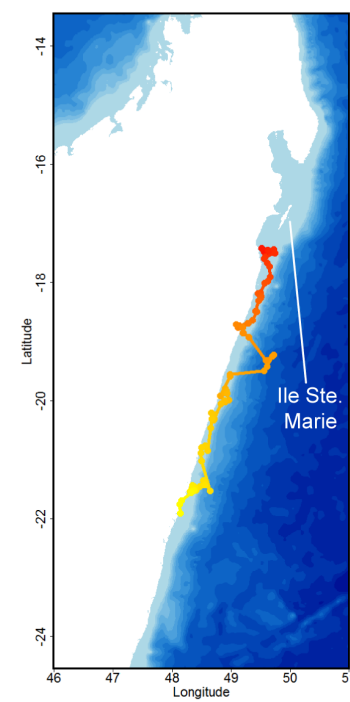
H. Tag 8 – M, CH/PE



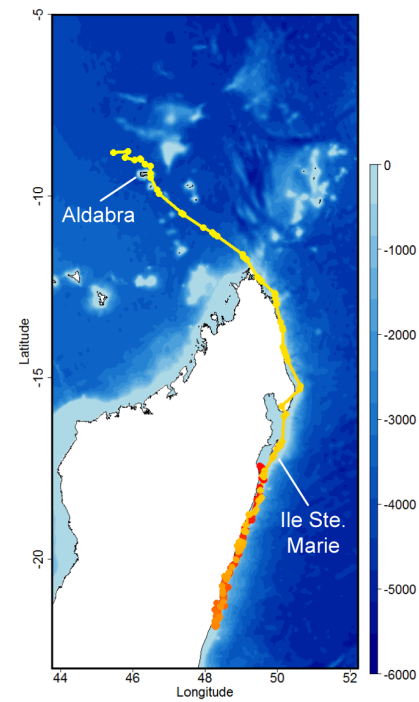
I. Tag 9 – F, NA



J. Tag 10 – F, Mother

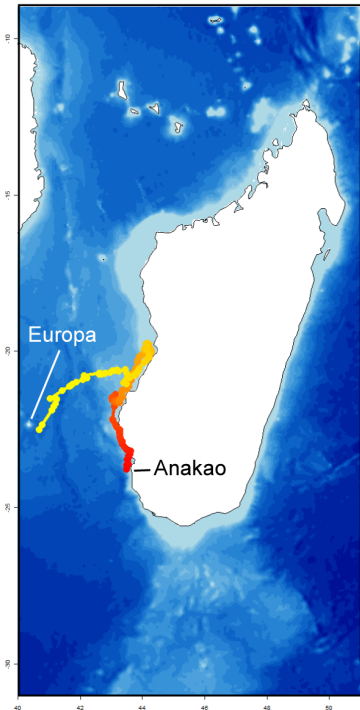


K. Tag 11 – M, PE

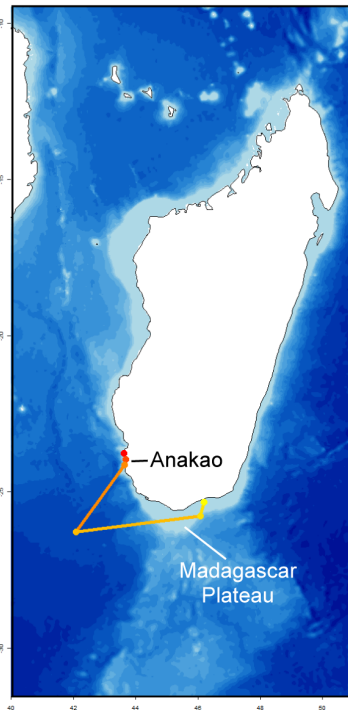


L. Tag 12 – F, NA

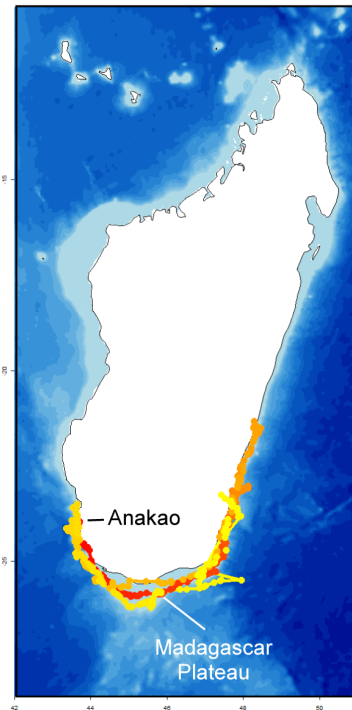
Fig. S1 (continued). Tracks for each humpback whale satellite tagged off Madagascar: Tags 1–12 from Ile Ste. Marie in the northeast, and Tags 13–23 from Anakao in the southwest. Each location is represented by a dot with a line connecting temporally consecutive locations (legs); locations on land due to location error have not been removed. Temporal progression is represented with a continuous color gradient, from the first initial location in red to the final location with last tag transmission in yellow



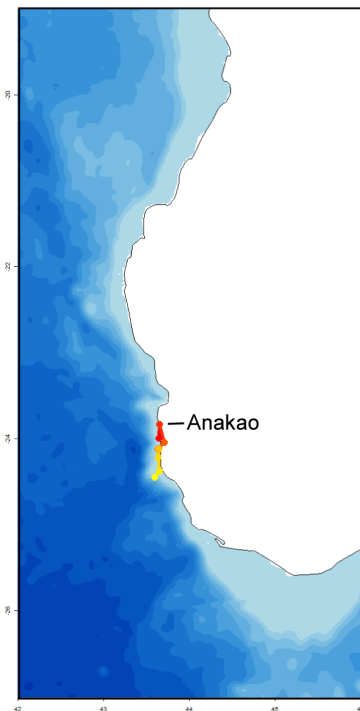
M. Tag 13 - Unk sex, in Pair



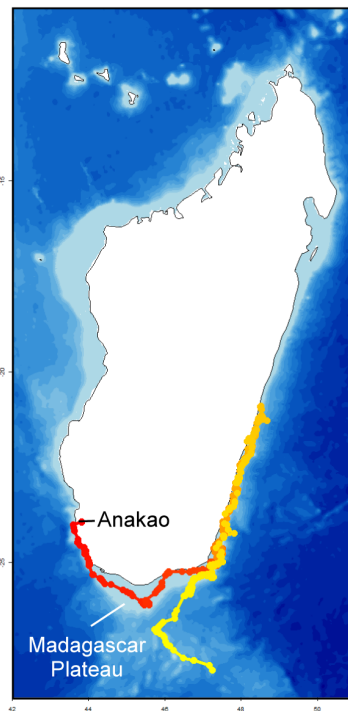
N. Tag 14 - F, in Pair



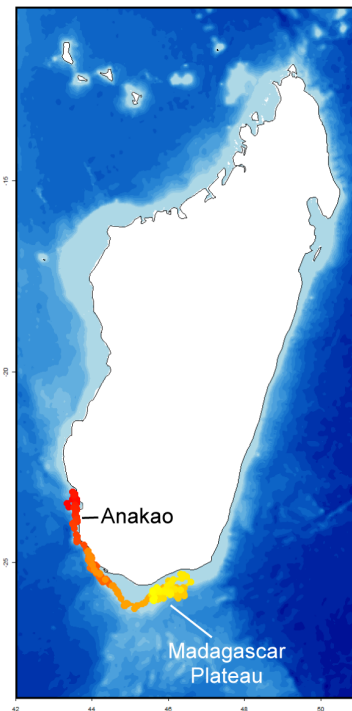
O. Tag 15 - F, in Pair



P. Tag 16 - F, in Pair



Q. Tag 17 - M, in Pair



R. Tag 18 - M, PE

Fig. S1 (continued). Tracks for each humpback whale satellite tagged off Madagascar: Tags 1–12 from Ile Ste. Marie in the northeast, and Tags 13–23 from Anakao in the southwest. Each location is represented by a dot with a line connecting temporally consecutive locations (legs); locations on land due to location error have not been removed. Temporal progression is represented with a continuous color gradient, from the first initial location in red to the final location with last tag transmission in yellow

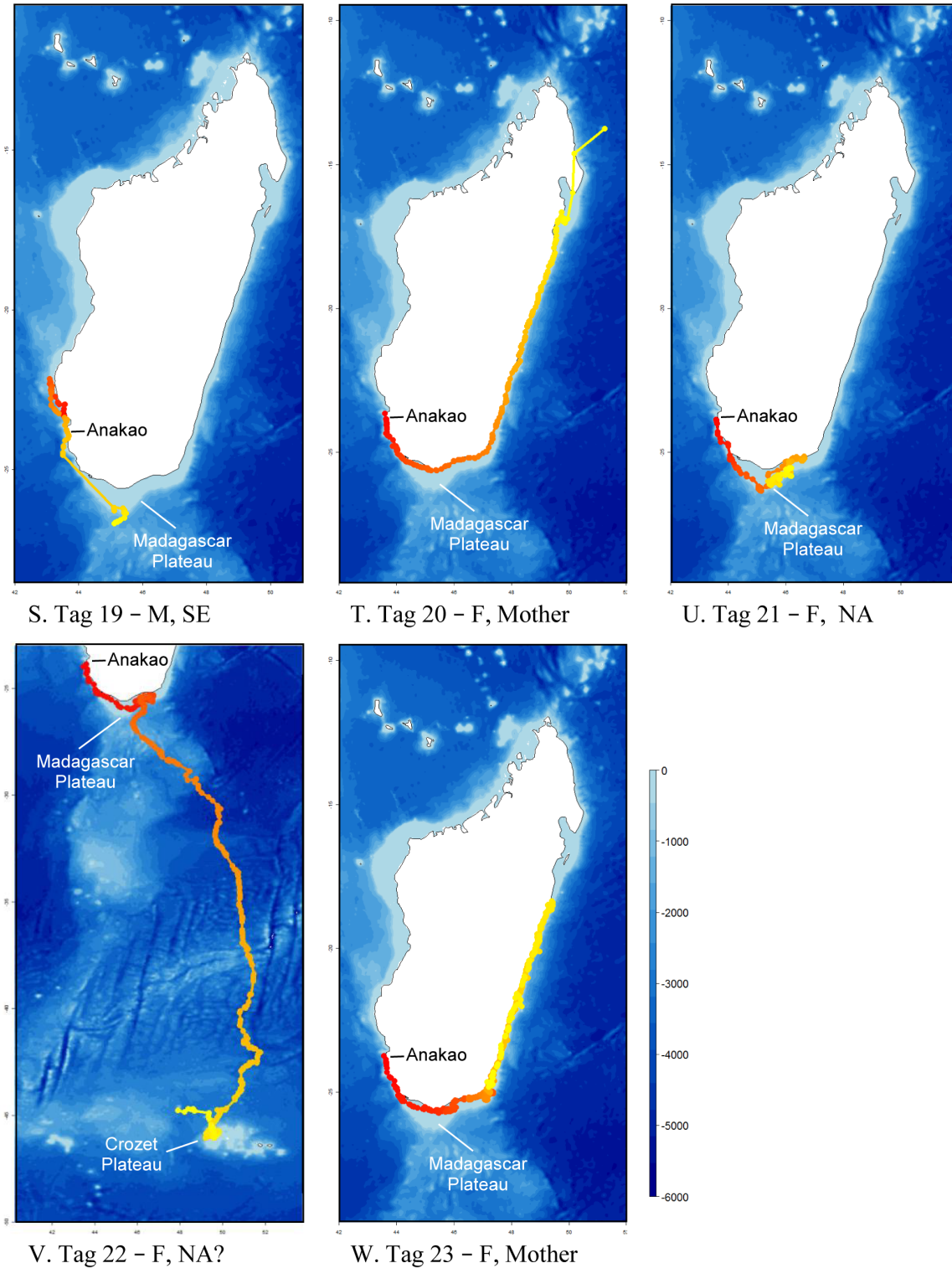


Fig. S1 (continued). Tracks for each humpback whale satellite tagged off Madagascar: Tags 1–12 from Ile Ste. Marie in the northeast, and Tags 13–23 from Anakao in the southwest. Each location is represented by a dot with a line connecting temporally consecutive locations (legs); locations on land due to location error have not been removed. Temporal progression is represented with a continuous color gradient, from the first initial location in red to the final location with last tag transmission in yellow