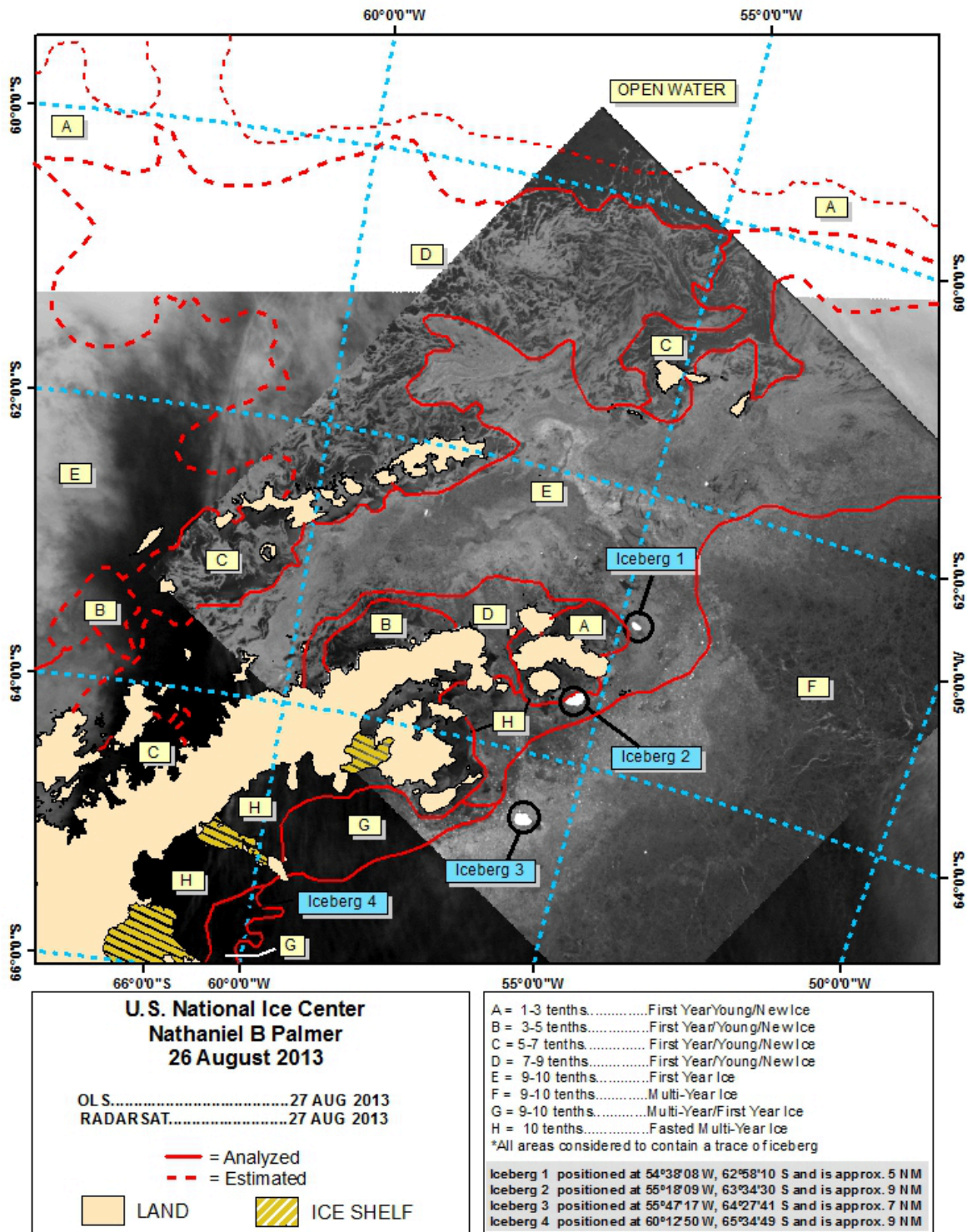
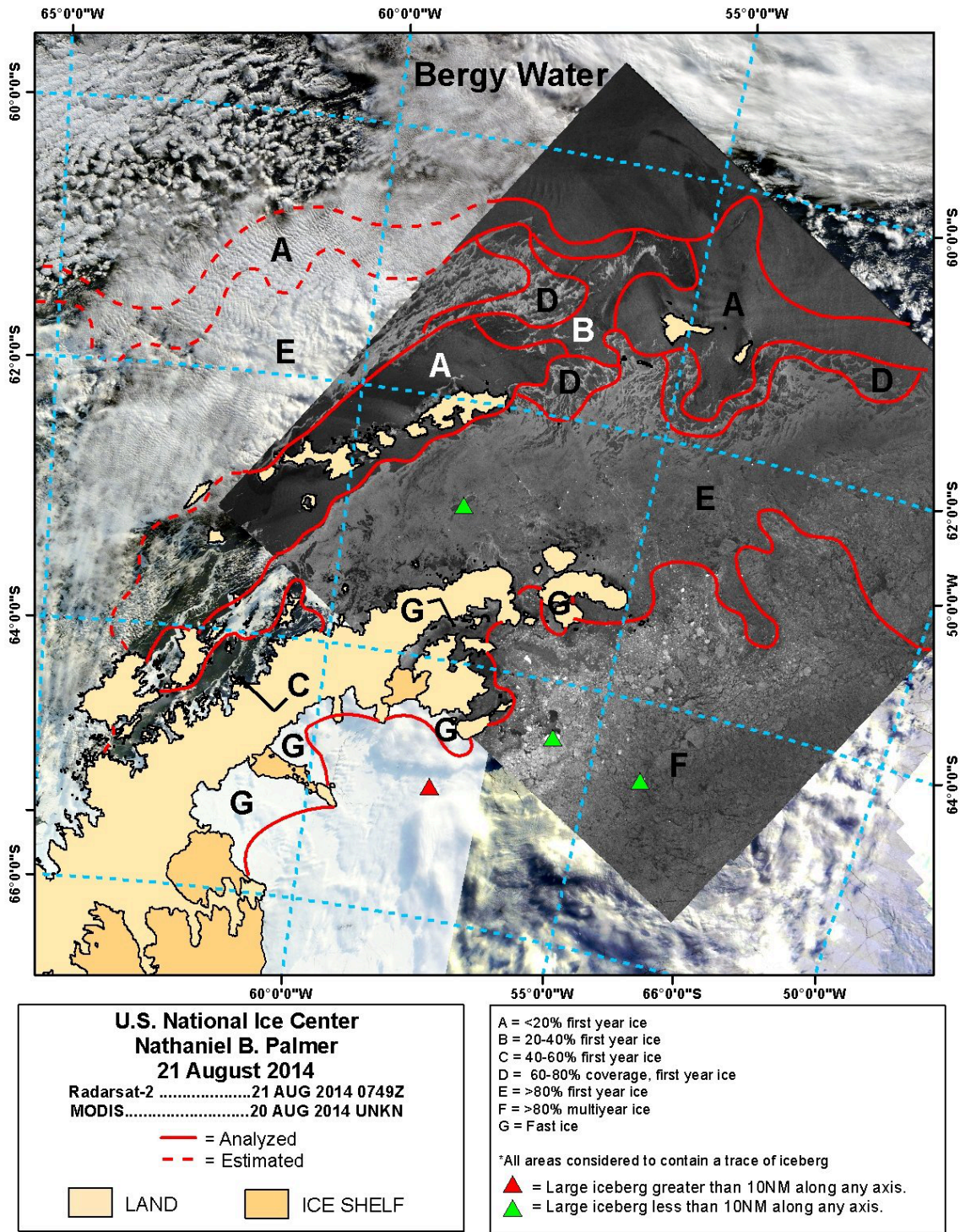


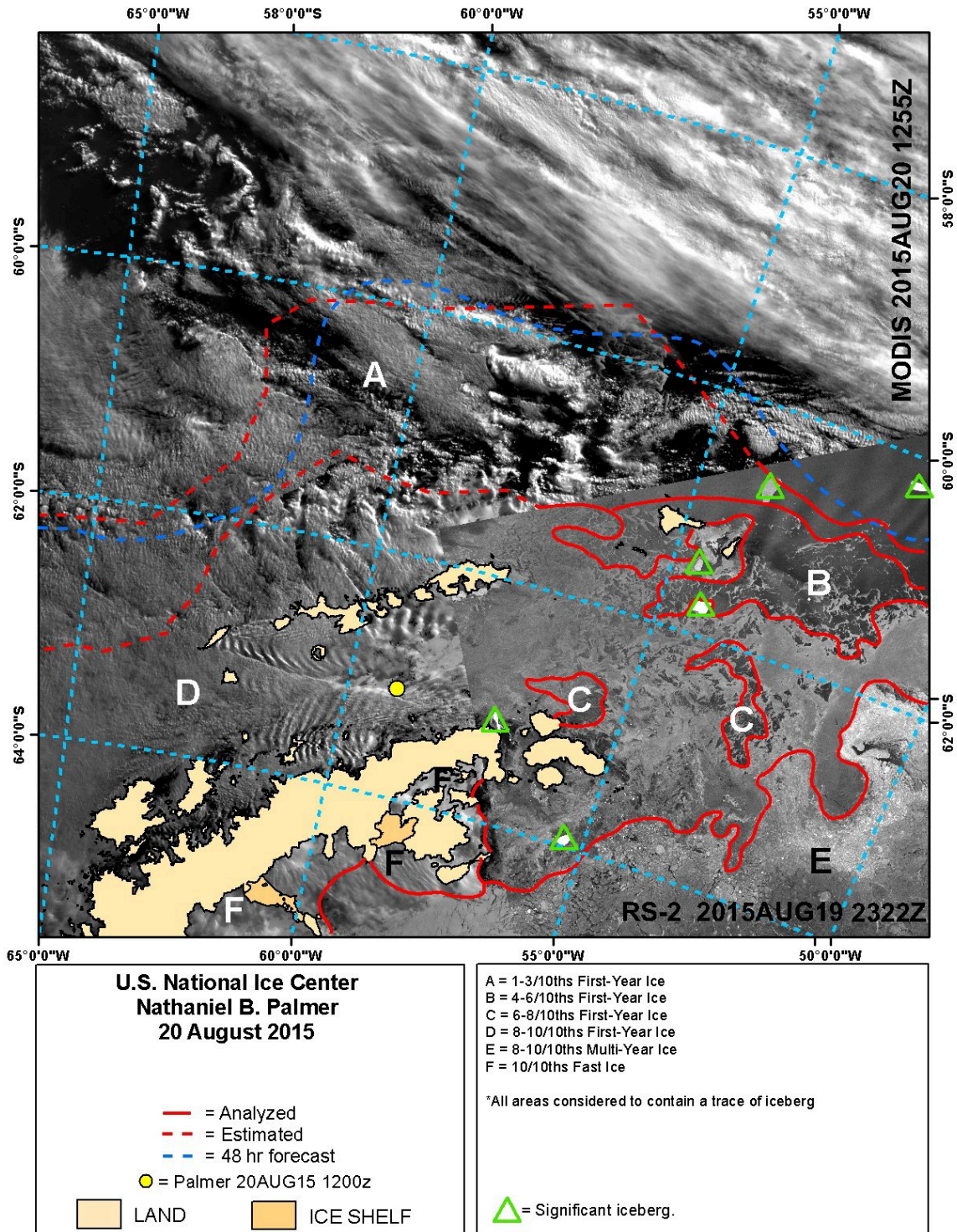
Supplement 2

Figs. S1, S2, S3, S4. Satellite images from the U.S. National Ice Center showing ice concentration around the northern Antarctic Peninsula in August 2013 – 2016. Images are from as close to the same date as possible each year and show ice concentration around the survey area. Images are courtesy of the U.S. National Ice Center (2013 – 2016).

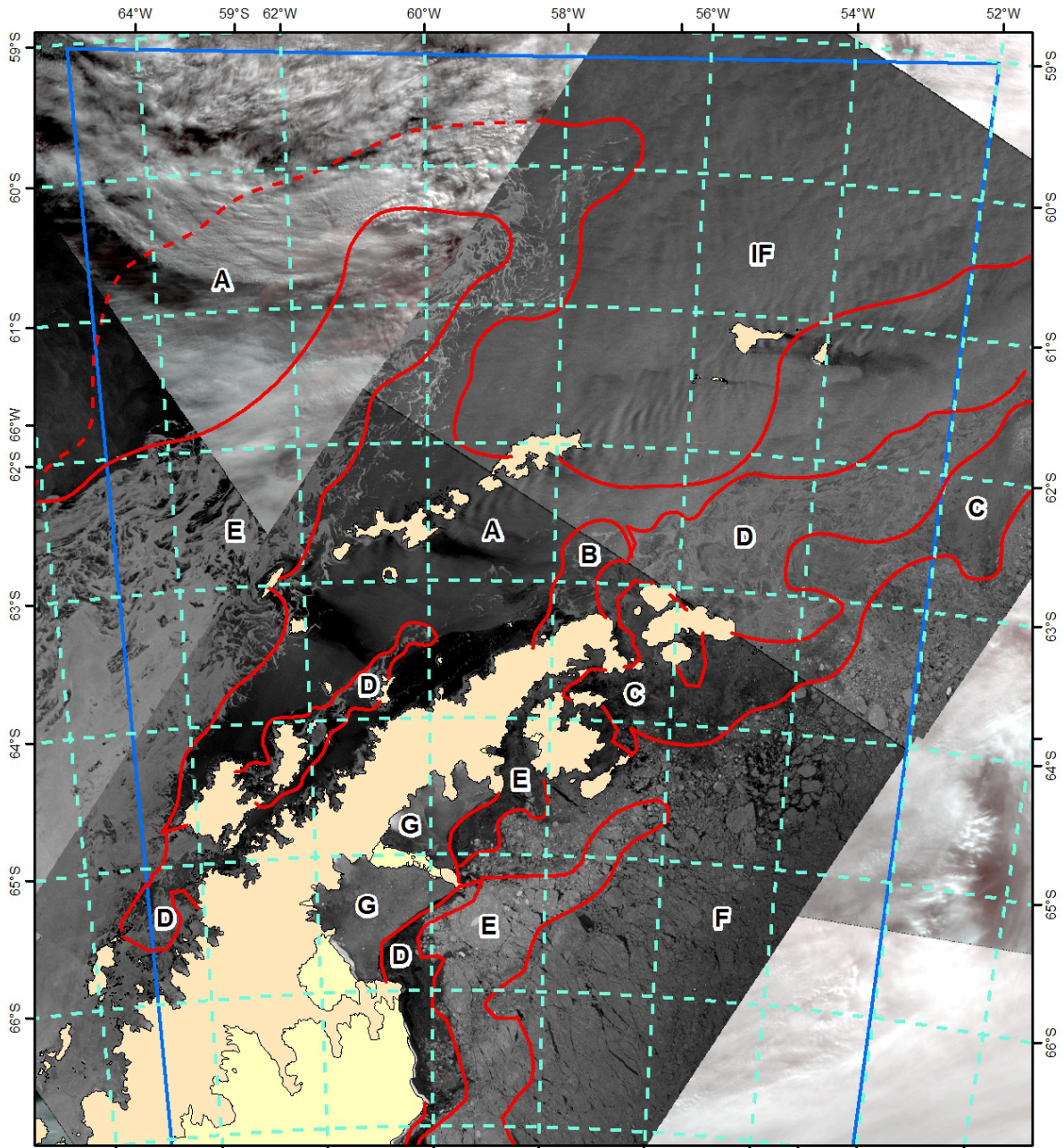




Radarsat Imagery Copyright © 2013 MacDonald, Dettwiler and Associates Ltd. All rights reserved.



Radarsat Imagery Copyright © 2015 MacDonald, Dettwiler and Associates Ltd. All rights reserved.



**U.S. National Ice Center
03 August 2016**

— Analyzed
- - - Estimated

IF Sea Ice Free
N New ice
Y Young ice
MY Multi-year ice

Sea Ice Concentration
IF = Ice Free
A 1-3/10ths N and Y
B 4-6/10ths N and Y
C 6-8/10ths N, Y, and FY
D 8-10/10ths N, Y, and FY
E 8-10/10ths FY
F 8-10/10ths MY
G Fast Ice

RADARSAT-2
03 Aug 2016 0754Z
03 Aug 2016 0752Z
SENTINEL
03 Aug 2016 0009Z
03 Aug 2016 0007Z
MODIS
03 Aug 2016 1405
03 Aug 2016 1400

All areas considered to contain icebergs.

Radarsat Imagery Copyright © 2016 MacDonald, Dettwiler and Associates Ltd. All rights reserved.

Sentinel-1 Imagery Copyright © 2016 ESA. All rights reserved.