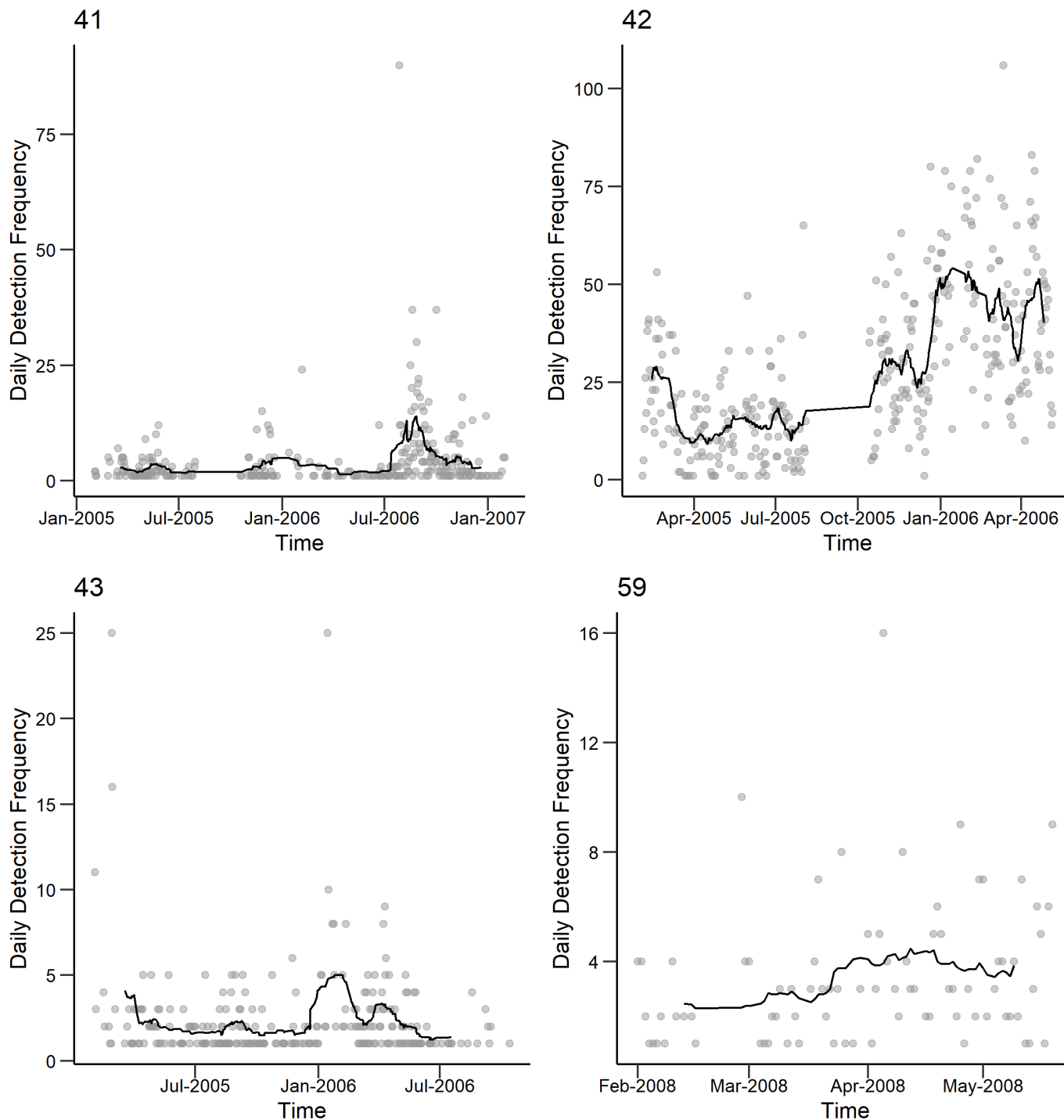
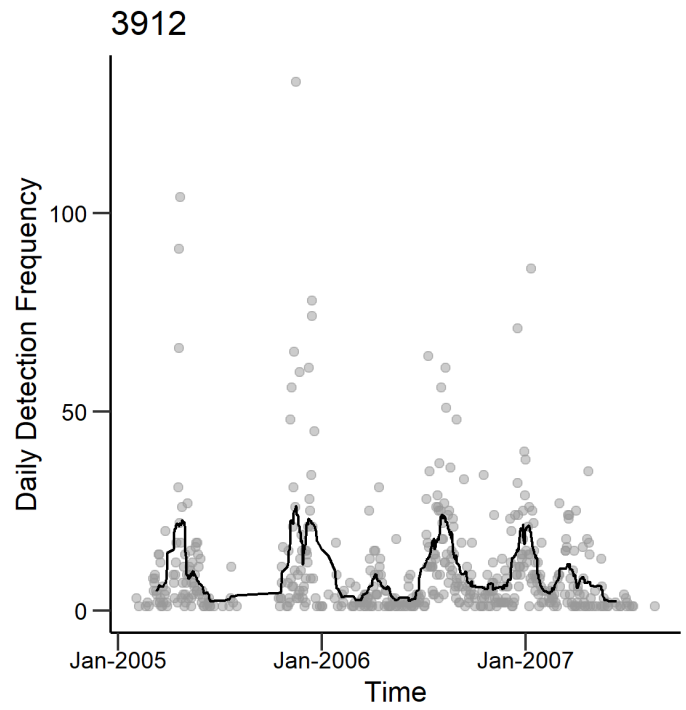
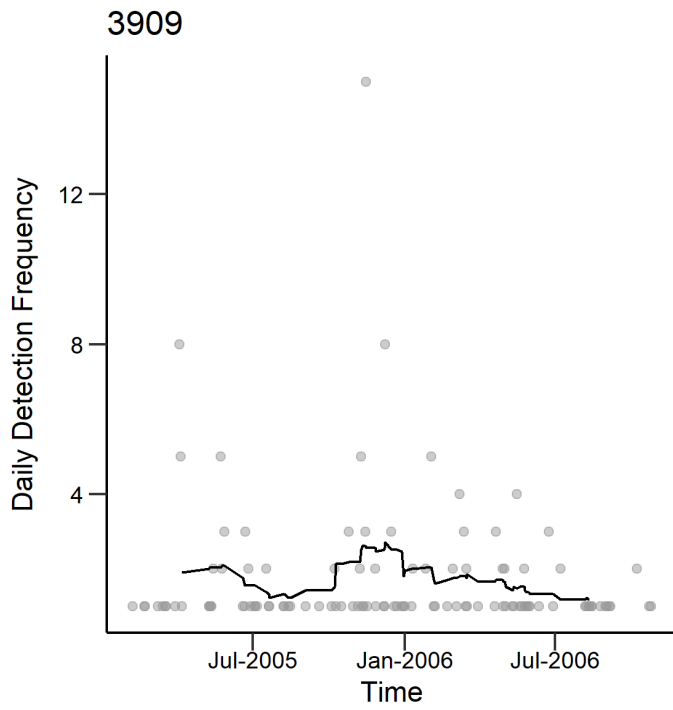
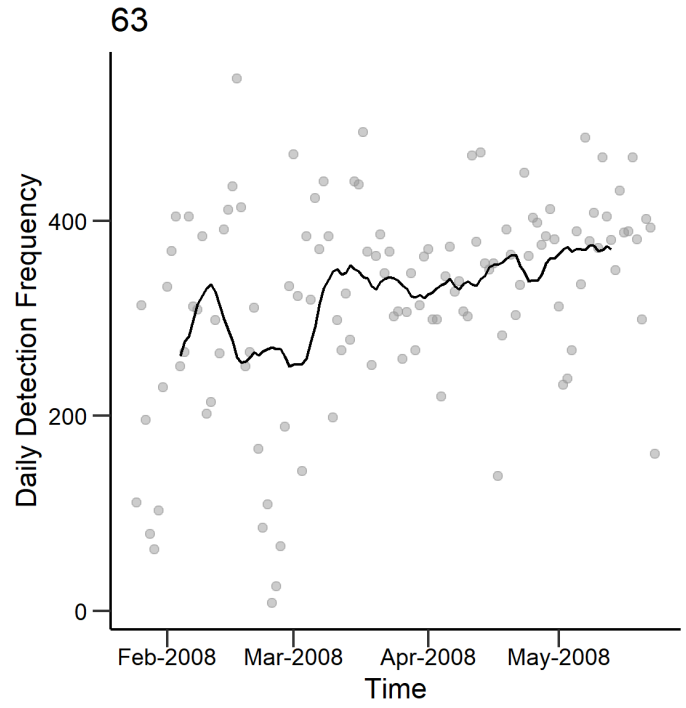
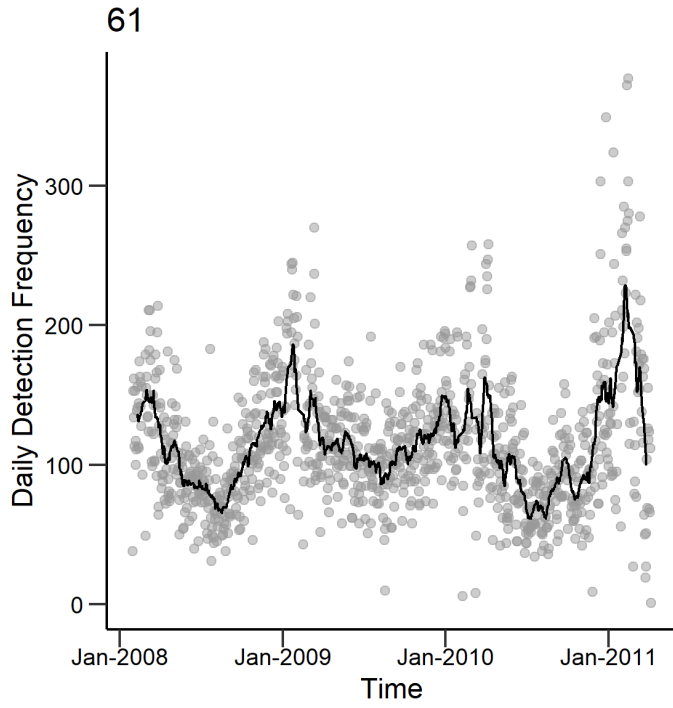
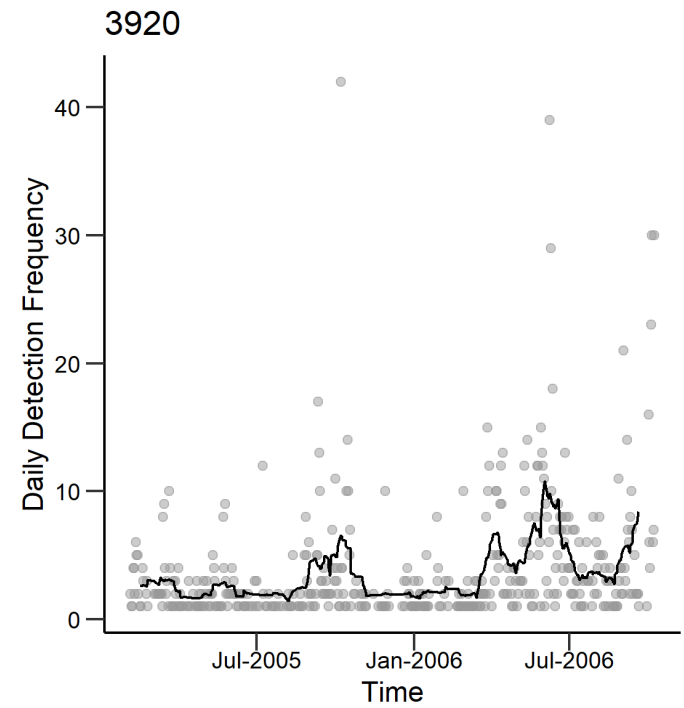
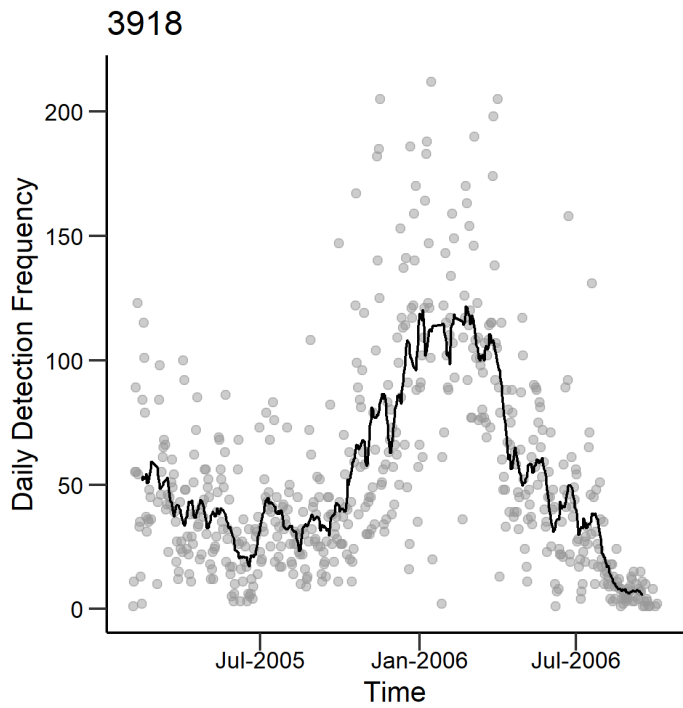
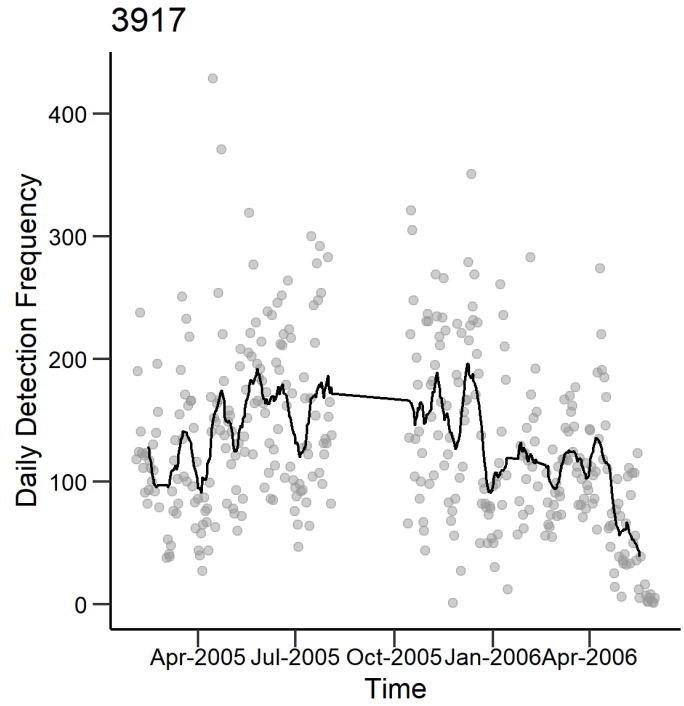
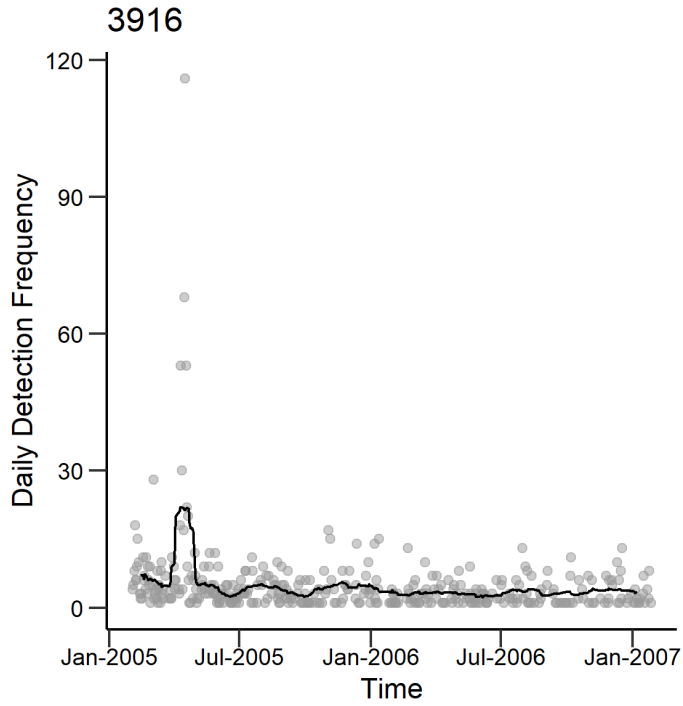
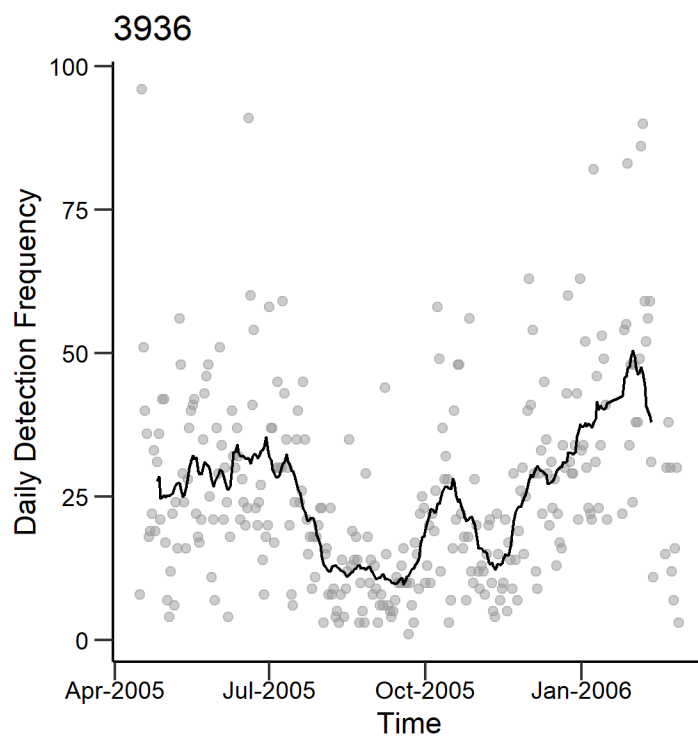
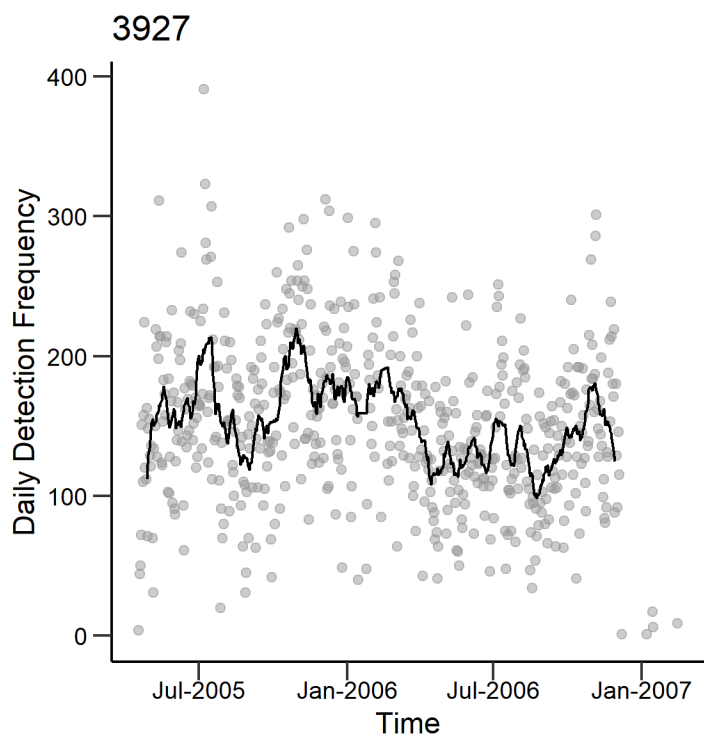
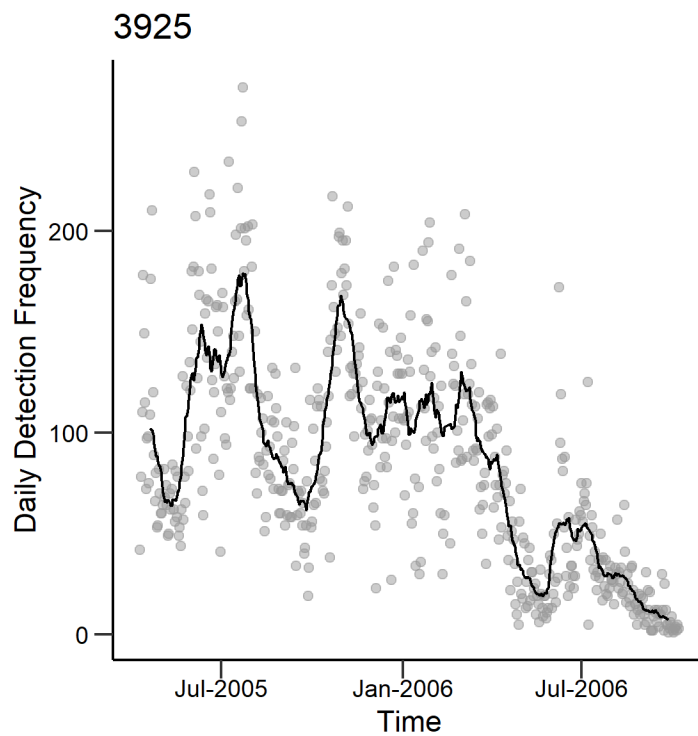
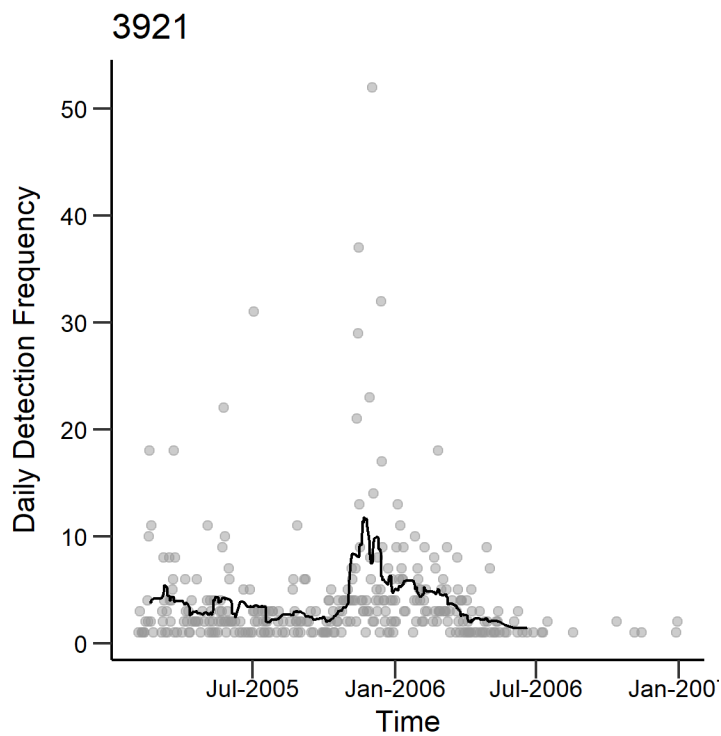


Fig. S1. Daily detection frequencies at the home receiver for each fish that met the home receiver requirement of consistent detections at a single receiver for at least three months outside of the spawning season. Each point represents detections per day, while the black line indicates a 20-day moving average of the daily detection frequency. The tag number for each fish is shown in the top left corner of the plot.









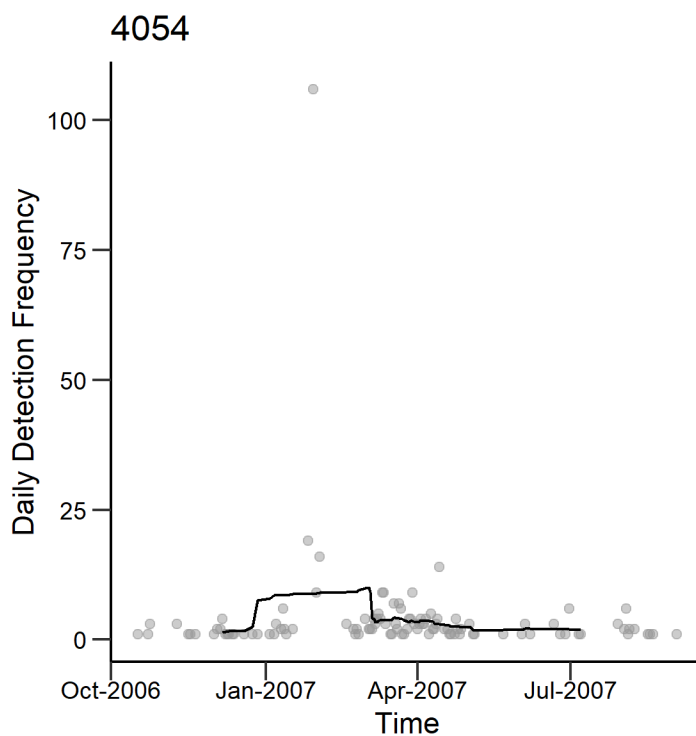
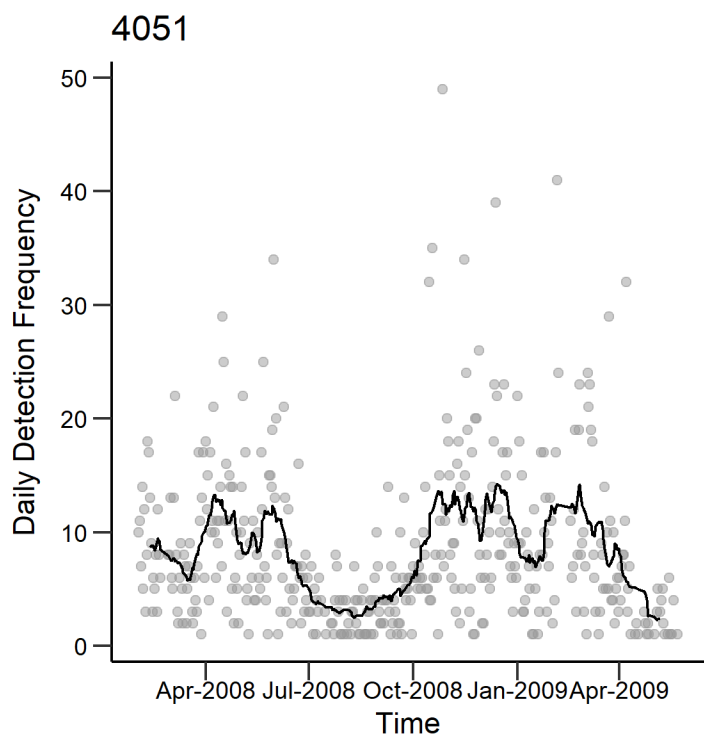
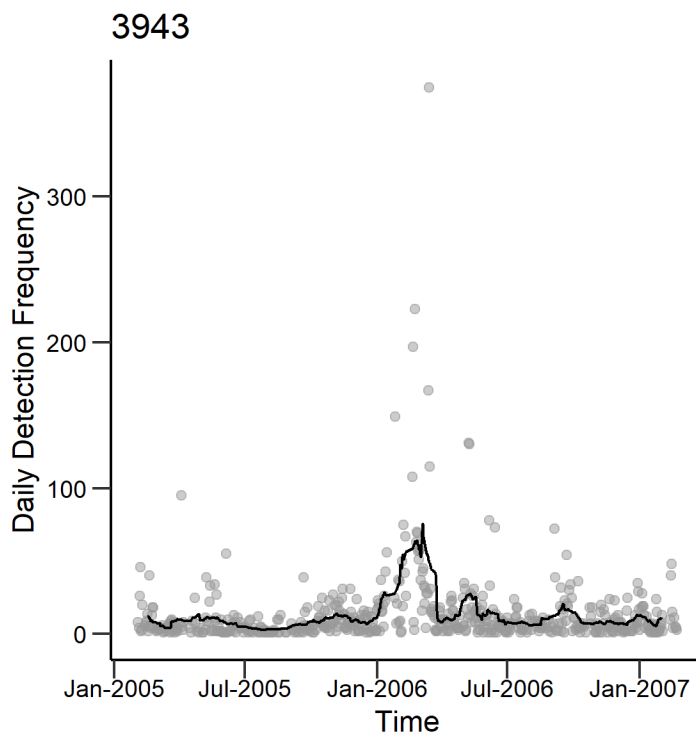
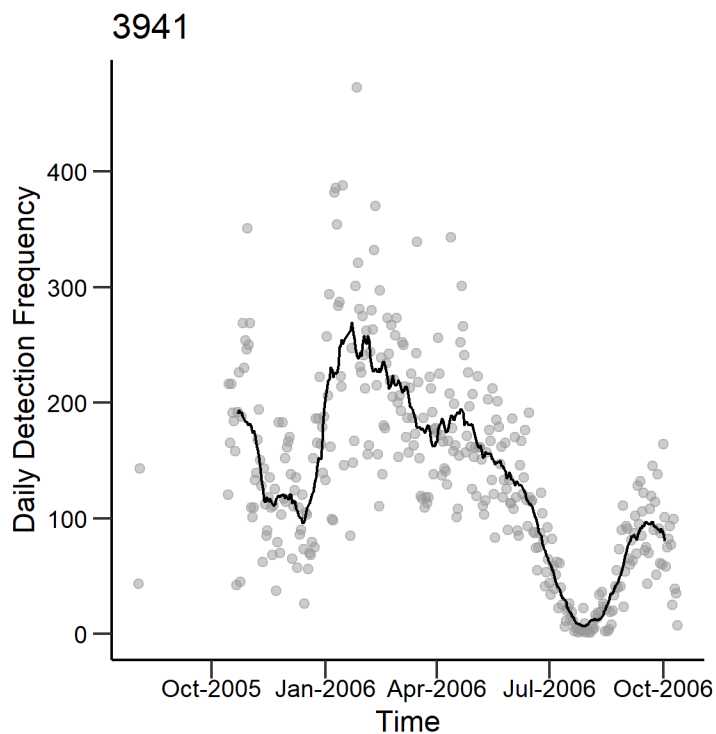


Table S1. Morphometric and tag data for the 20 Nassau Grouper with home receivers. \*Length and weight for Fish ID 3925 were not accurately measured.

Fish ID	Tag Type	Detection Period	Home Receiver	Total Length (cm)	Weight (kg)	Condition Factor
41	Depth-Coded	Jan 2005 – Jan 2007	LC3	70	6.1	1.78
42	Depth-Coded	Jan 2005 – May 2006	LC3	83	12.5	2.19
43	Depth-Coded	Jan 2005 – Oct 2006	LC13	62	5	2.10
59	Depth-Coded	Feb 2008 – May 2008	CB8	60	4	1.85
61	Depth-Coded	Jan 2008 – Apr 2011	CB3	68	6.25	1.99
63	Depth-Coded	Jan 2008 – May 2008	CB5	72	7.5	2.01
3909	Non-Depth-Coded	Jan 2005 – Oct 2006	LC7	83	12.36	2.16
3912	Non-Depth-Coded	Jan 2005 – Aug 2007	LC3	63.5	4.6	1.80
3916	Non-Depth-Coded	Jan 2005 – Feb 2007	LC6	72	7.4	1.98
3917	Non-Depth-Coded	Jan 2005 – Jun 2006	LC3	84	11.4	1.92
3918	Non-Depth-Coded	Jan 2005 – Oct 2006	LC8	77	9.8	2.15
3920	Non-Depth-Coded	Jan 2005 – Oct 2006	LC1	67	5.6	1.86
3921	Non-Depth-Coded	Jan 2005 – Dec 2006	LC10	81	11.75	2.21
3925*	Non-Depth-Coded	Apr 2005 – Oct 2006	LC10	NA	NA	NA
3927	Non-Depth-Coded	Feb 2005 – Feb 2007	LC12	67.5	6.1	1.98
3936	Non-Depth-Coded	Apr 2005 – Feb 2006	LC12	75	9.5	2.25
3941	Non-Depth-Coded	Aug 2005 – Feb 2007	LC3	59	3.5	1.70
3943	Non-Depth-Coded	Jan 2005 – Feb 2007	LC2	64	4.6	1.75
4051	Non-Depth-Coded	Jan 2008 – May 2009	CB1	56	3.5	1.99
4054	Non-Depth-Coded	Oct 2006 – Aug 2007	CB1	60	4.5	2.08