

Figure S1. Field sites in southern Sweden for collection of mussels (*Mytilus edulis*) from the west coast (circle) and from the east coast (square) and green crabs (*Carcinus maenas*; triangle).

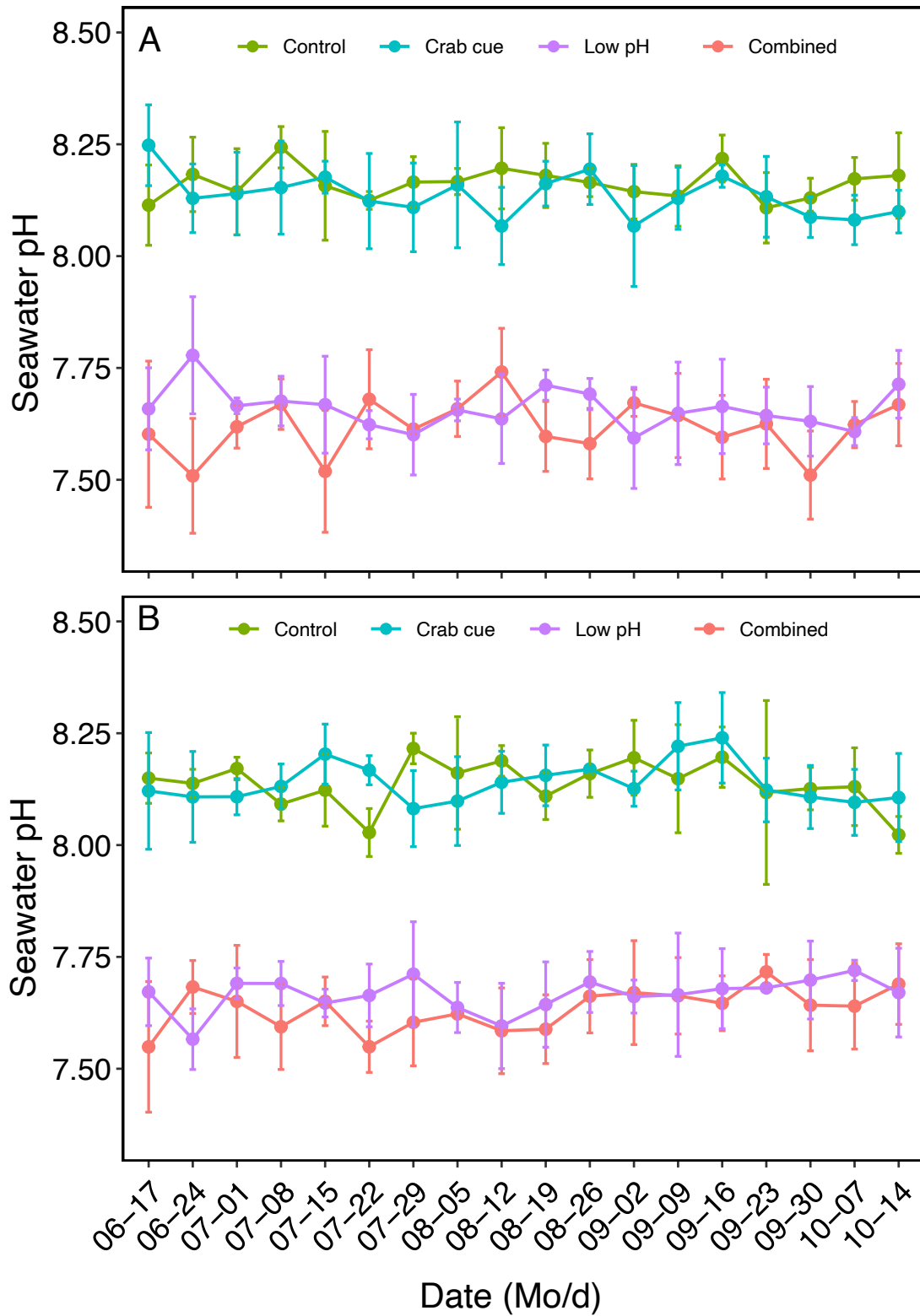


Figure S2. Weekly pH values (mean \pm SD) of experimental treatments over the duration of the experiments for east (A) and west (B) coast mussels. Mean and SD of each week are calculated from three seawater samples ($n = 3$).