

Fig. S1. Types of gear used in nekton sampling, 2016–2019: (a) 21.3-m seine, (b) 183-m seine, and (c) baited remote underwater video (BRUV) system.

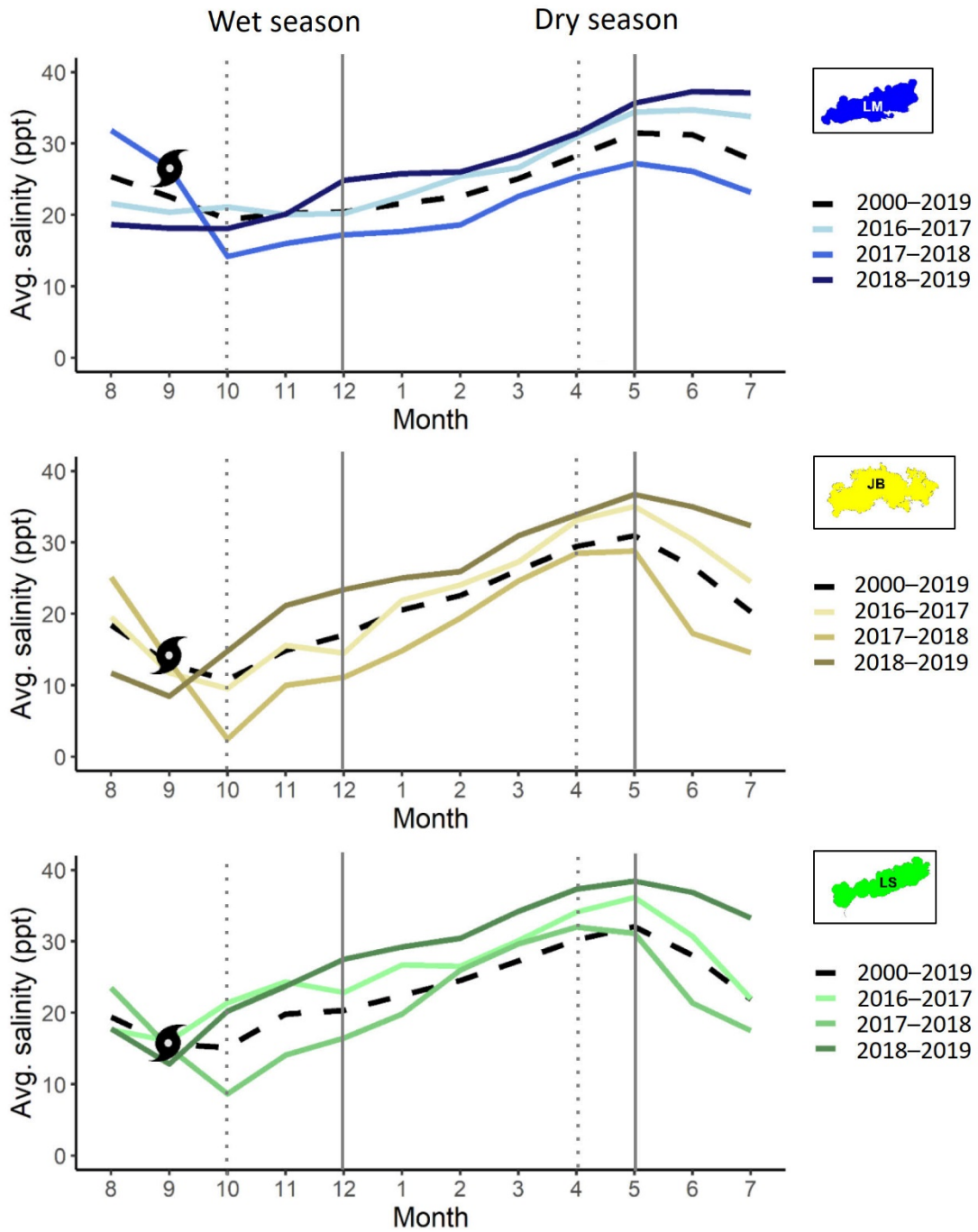


Fig. S2. Monthly mean salinity from hydrology stations in each embayment (LM: Little Madeira; JB: Joe Bay; LS: Long Sound) for the 3 water-years of the study, 2016–2019. Vertical lines denote the timing of sampling for seines (dotted lines: October and April) and BRUVs (solid lines: December and May) each year. Black dashed lines show the 20-year average salinity (2000–2019) for each station for comparison. The hurricane symbol indicates the timing of Hurricane Irma’s passage over the study area in year 2 (September 10, 2017).

Table S1. Pairwise results for spatial (basin) and temporal factors (season, water-year) tested in the PERMANOVA analysis of (a) small-bodied and (b) large-bodied nekton assemblages sampled with seines and BRUVs in northeastern Florida Bay, 2016–2019. **Bold** text indicates significant pairwise differences among factors.

**(a) Small-bodied nekton**

Temporal factors	Seines						BRUVs						
	Little Madeira		Joe Bay		Long Sound		Little Madeira		Joe Bay		Long Sound		
	t	p	t	p	t	p	t	p	t	p	t	p	
Wet season													
2016, 2017	<b>1.67</b>	<b>0.006</b>	1.33	0.111	0.95	0.554	<b>2.11</b>	<b>0.008</b>	<b>3.50</b>	<b>&lt;0.001</b>	<b>2.45</b>	<b>0.001</b>	
2016, 2018	<b>1.84</b>	<b>0.003</b>	<b>1.76</b>	<b>0.014</b>	1.04	0.379	1.14	0.287	1.24	0.175	1.25	0.212	
2017, 2018	0.81	0.726	<b>1.51</b>	<b>0.044</b>	1.24	0.138	<b>2.26</b>	<b>0.002</b>	<b>1.93</b>	<b>0.011</b>	<b>2.18</b>	<b>0.004</b>	
Dry Season													
2016, 2017	1.79	0.112	1.09	0.284	1.39	0.083	<b>2.48</b>	<b>0.002</b>	0.88	0.520	<b>2.30</b>	<b>0.003</b>	
2016, 2018	1.25	0.165	1.13	0.229	<b>1.91</b>	<b>0.002</b>	<b>2.05</b>	<b>0.004</b>	<b>1.65</b>	<b>0.043</b>	<b>2.77</b>	<b>&lt;0.001</b>	
2017, 2018	1.16	0.216	1.05	0.360	1.29	0.131	<b>2.99</b>	<b>&lt;0.001</b>	1.36	0.148	<b>2.71</b>	<b>&lt;0.001</b>	
2016	Wet, Dry	1.42	0.063	1.32	0.080	1.22	0.185	0.54	0.778	1.32	0.152	<b>1.83</b>	<b>0.026</b>
2017	Wet, Dry	<b>1.71</b>	<b>0.003</b>	<b>1.55</b>	<b>0.008</b>	<b>1.58</b>	<b>0.013</b>	<b>1.75</b>	<b>0.012</b>	<b>2.35</b>	<b>0.004</b>	<b>2.84</b>	<b>&lt;0.001</b>
2018	Wet, Dry	<b>1.90</b>	<b>0.016</b>	<b>2.19</b>	<b>0.001</b>	<b>1.74</b>	<b>0.002</b>	<b>2.36</b>	<b>&lt;0.001</b>	1.33	0.148	<b>2.07</b>	<b>0.006</b>

**(b) Large-bodied nekton**

Temporal factors	Seines						BRUVs						
	Little Madeira		Joe Bay		Long Sound		Little Madeira		Joe Bay		Long Sound		
	t	p	t	p	t	p	t	p	t	p	t	p	
Wet season													
2016, 2017	1.61	0.051			0.92	0.535	<b>1.65</b>	<b>0.025</b>	<b>1.84</b>	<b>0.015</b>	<b>1.66</b>	<b>0.030</b>	
2016, 2018	0.92	0.403			0.93	0.481	<b>2.82</b>	<b>&lt;0.001</b>	0.98	0.421	<b>2.22</b>	<b>0.001</b>	
2017, 2018	1.06	0.373			1.05	0.404	<b>2.41</b>	<b>&lt;0.001</b>	<b>2.14</b>	<b>0.005</b>	<b>3.28</b>	<b>&lt;0.001</b>	
Dry Season													
2016, 2017	1.41	0.058			<b>1.90</b>	<b>0.030</b>	<b>1.69</b>	<b>0.010</b>	1.08	0.325	<b>2.85</b>	<b>&lt;0.001</b>	
2016, 2018	1.30	0.172			1.24	0.111	<b>1.78</b>	<b>0.008</b>	0.37	0.939	<b>3.31</b>	<b>&lt;0.001</b>	
2017, 2018	1.58	0.055			<b>1.35</b>	<b>0.028</b>	<b>2.19</b>	<b>&lt;0.001</b>	1.19	0.235	<b>1.34</b>	<b>0.119</b>	
2016	Wet, Dry	0.58	0.914			1.02	0.480	<b>2.35</b>	<b>&lt;0.001</b>	<b>1.57</b>	<b>0.040</b>	1.09	0.329
2017	Wet, Dry	1.75	0.062			<b>1.89</b>	<b>0.030</b>	<b>2.04</b>	<b>&lt;0.001</b>	<b>2.15</b>	<b>0.007</b>	<b>3.07</b>	<b>&lt;0.001</b>
2018	Wet, Dry	1.03	0.306			0.95	0.492	<b>1.66</b>	<b>0.013</b>	<b>1.93</b>	<b>0.006</b>	1.35	0.109