

## SUPPLEMENT

Shy albatross (*Thalassarche cauta*) chick mortality and heat stress in a temperate climate.

### Supplement 1: CRAGS further information

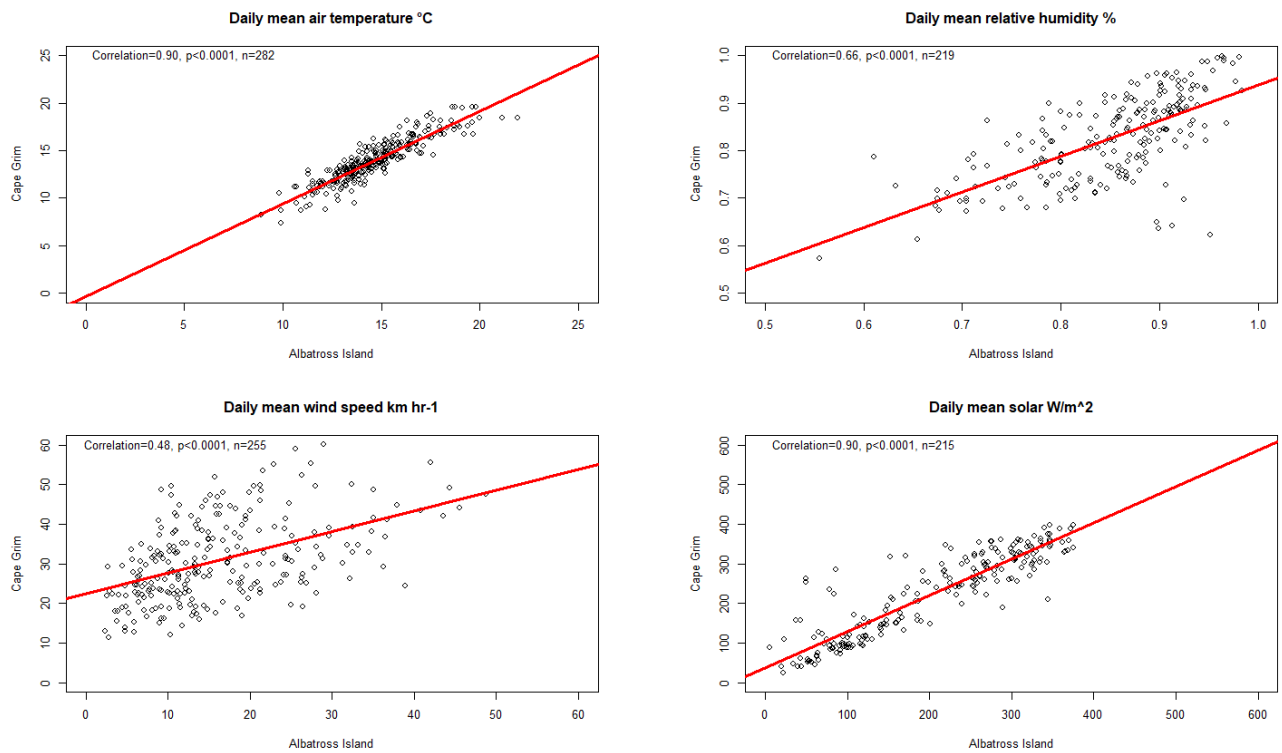
Video showing chick death captured with CRAGS camera: [https://github.com/clairemas0n/hot-chicks/blob/main/gigapan\\_chickdies\\_parentabsence%20.wmv](https://github.com/clairemas0n/hot-chicks/blob/main/gigapan_chickdies_parentabsence%20.wmv)

The only known predators of shy albatross on Albatross Island are native, white-bellied sea eagles (*Haliaeetus leucogaster*) which on rare occasions have been observed scavenging deceased chicks (Figure S1.1). However, no live predation has been observed and it is not considered a likely significant cause of mortality for shy albatross on Albatross Island.



**Figure S1.** Scavenging of dead shy albatross chick by suspected juvenile white-bellied sea eagle captured by CRAGS remote camera.

**Supplement 2:** Further analysis of data collected from weather stations.



**Figure S2.** Correlation matrix between the daily means of four meteorological variables relevant to heat stress recorded from remote Cape Grim station and local Albatross Island station.