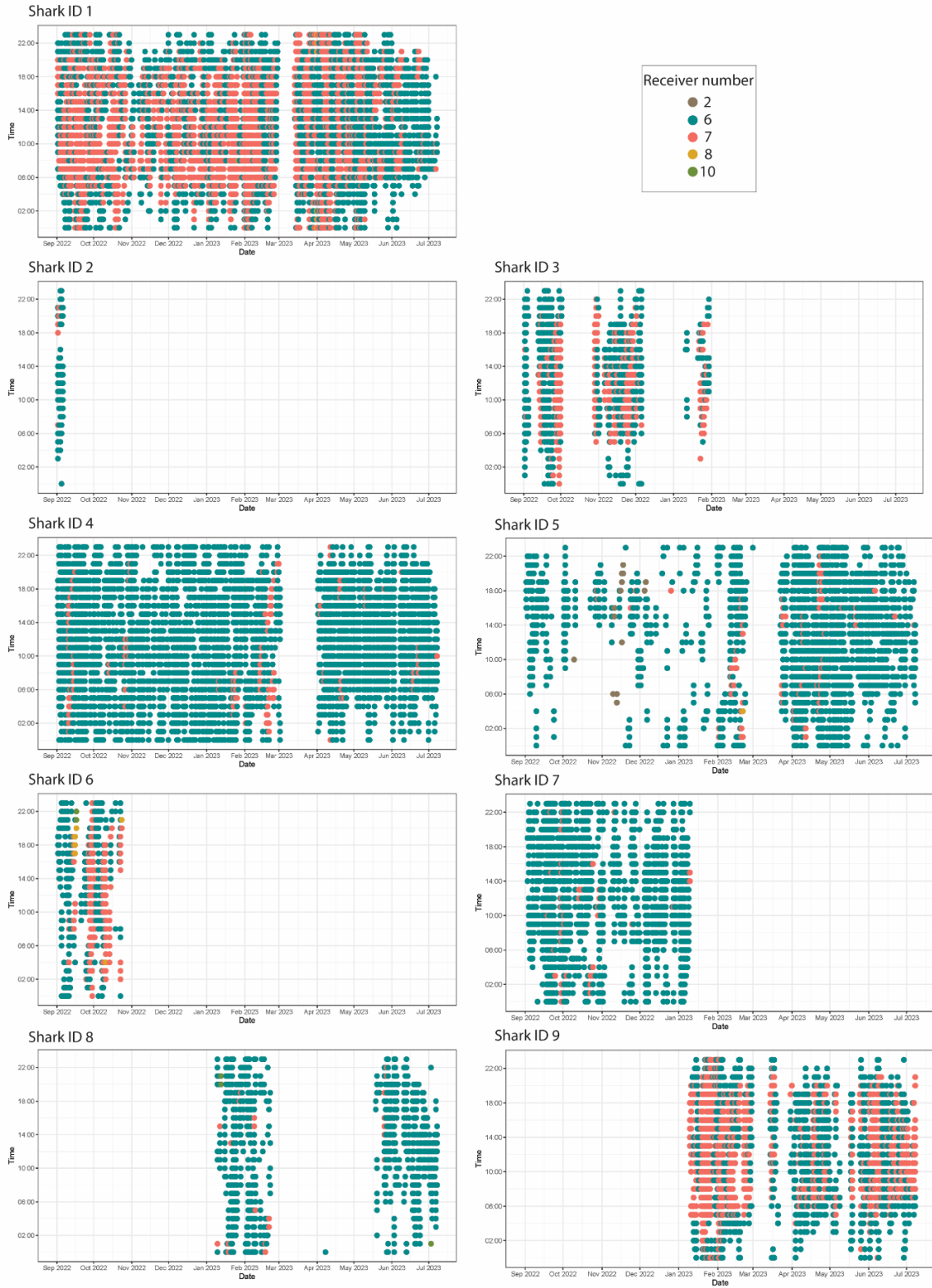
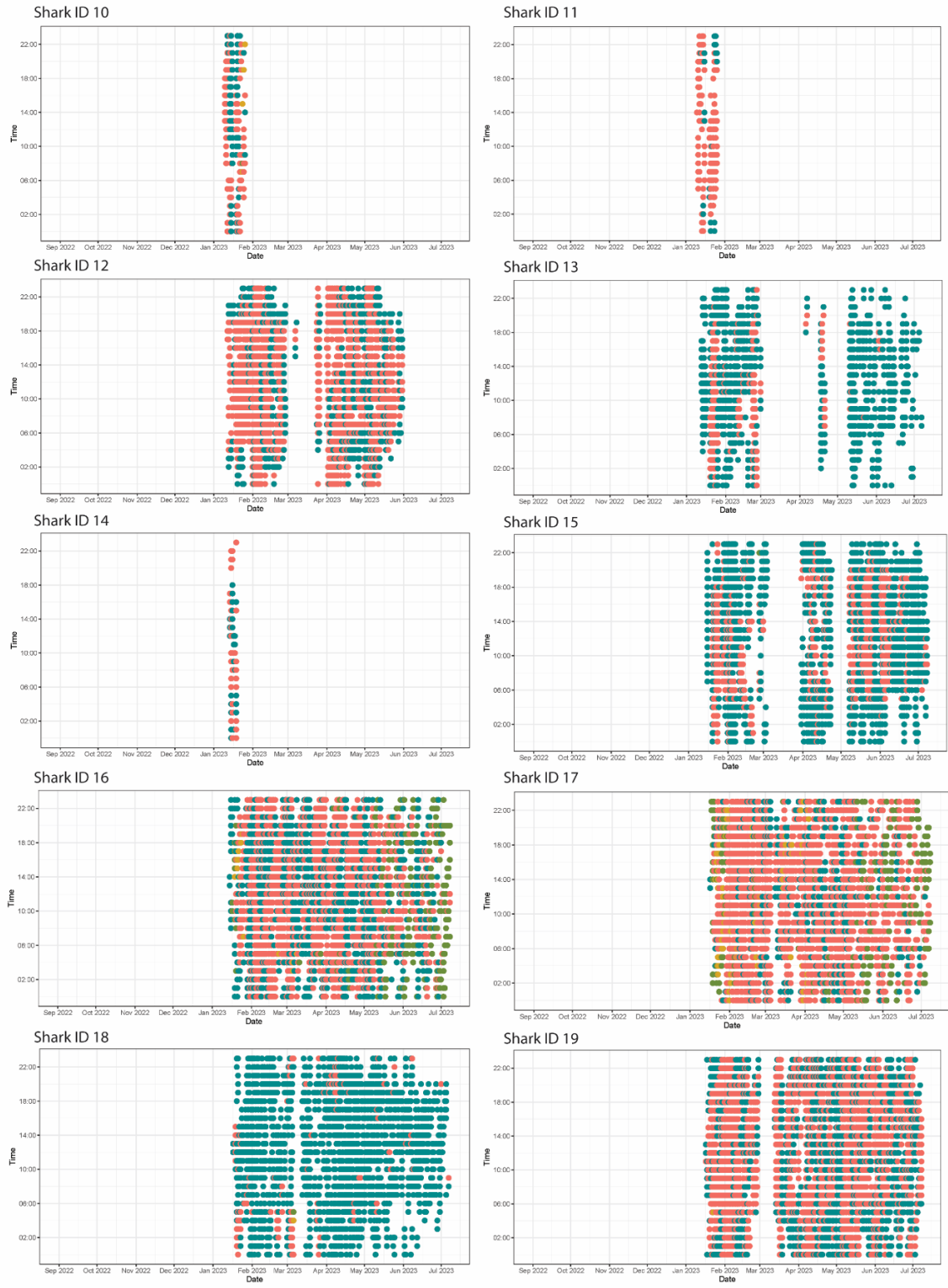


Table S1. Model selection output using backward and forward stepwise selection. The table shows the final results of the stepwise elimination process carried out by the *StepGAIC* function in the *GAMLSS* package. Each row represents the elimination of a factor.

Step	Df	Deviance	Resid. Df	Resid. Dev	AIC
			117786	170122.2	170314.1
- Size	1.032476	4.35E-02	117787.1	170122.2	170312
- Lunar illumination	1.0034892	3.78E-04	117788.1	170122.2	170310
- Tidal height	1.0012717	6.10E-05	117789.1	170122.2	170308
- Sex	0.8977441	5.67E-02	117790	170122.1	170306.2
- Tidal coefficient by receiver number	7.2821708	1.37E+01	117797.2	170135.6	170305.1





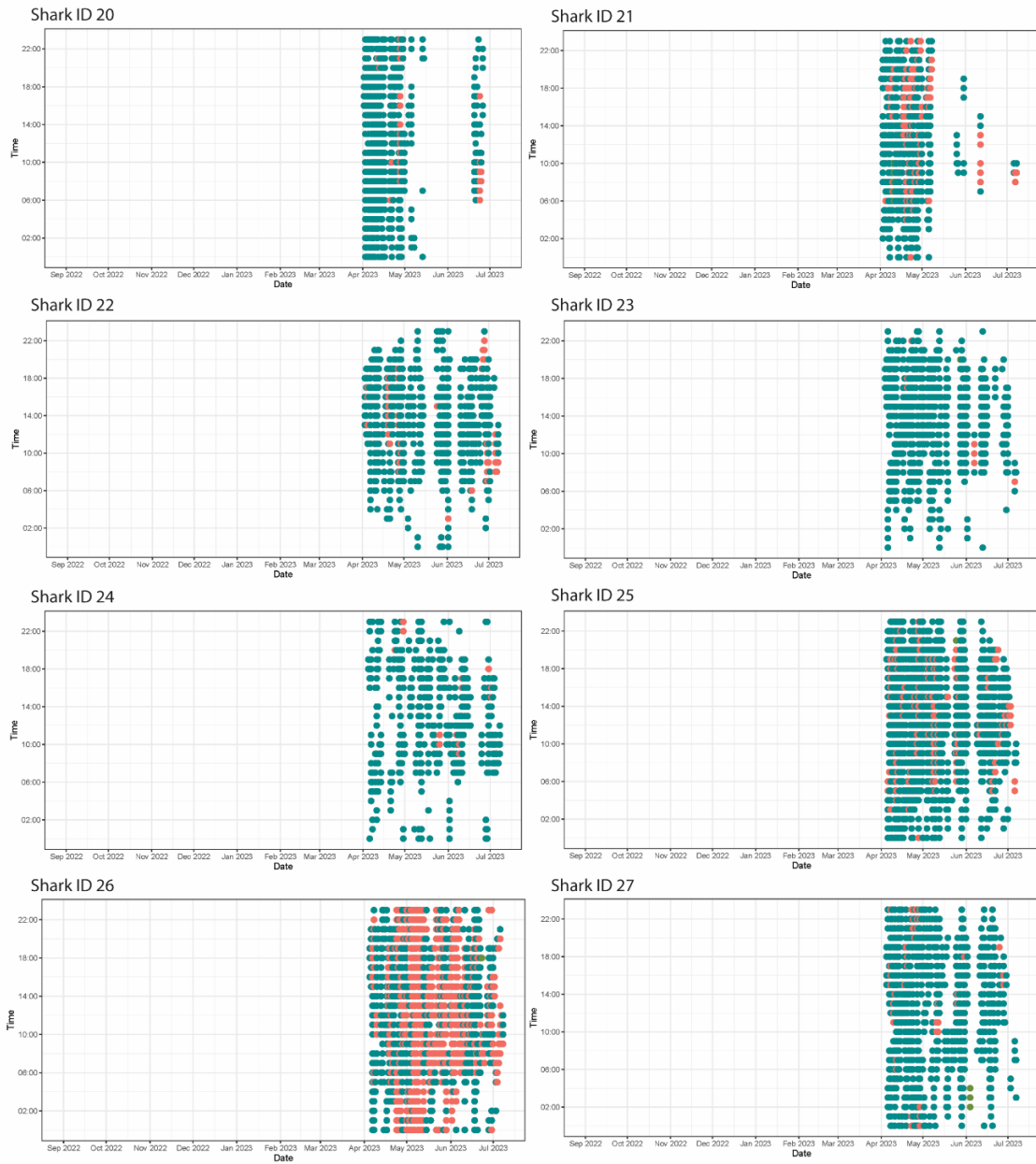


Figure S1. Diel Scatterplots for each tagged shark. Colored points show different receivers. Each point represents a detection.