

Fig. S1. Length Frequency Distribution (LFD) of *Parapeneus longirostris* between the seasons. 100 specimens in winter, 81 in spring, 111 in summer, and 108 in autumn.

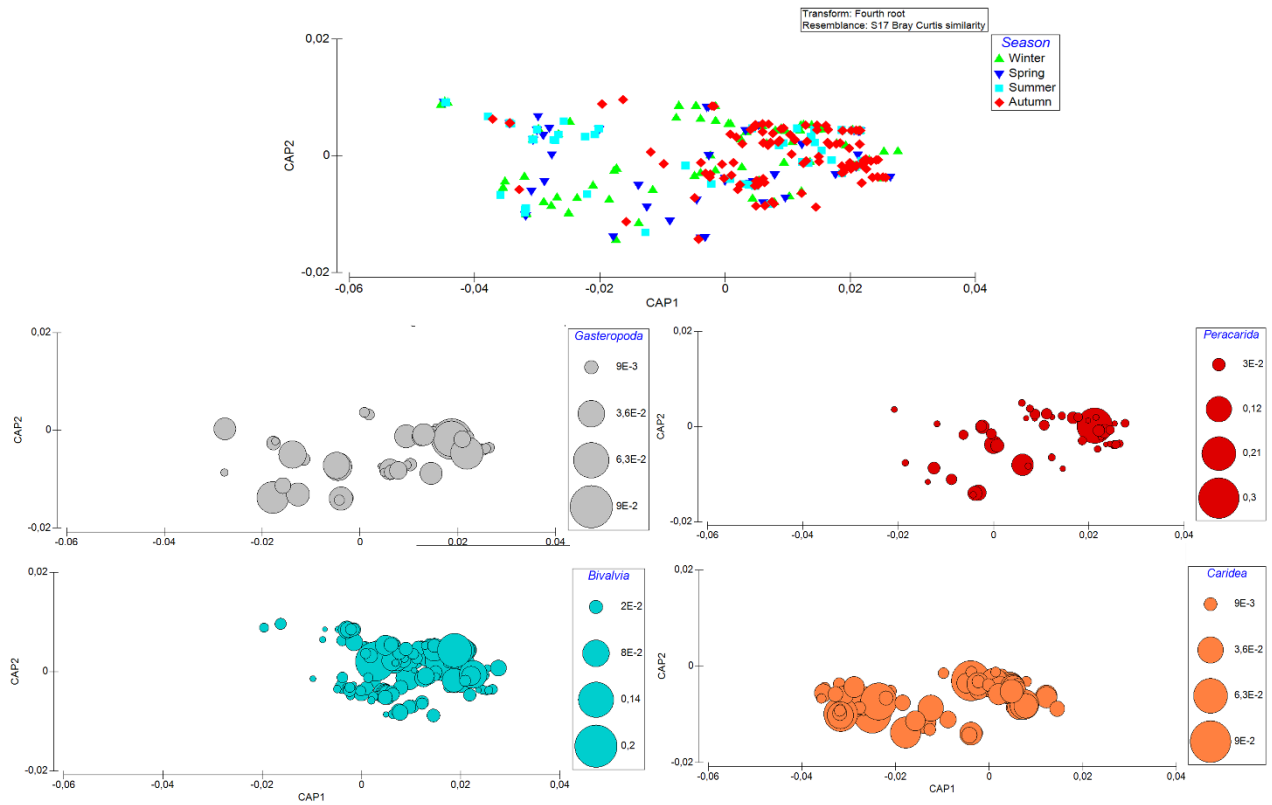


Fig. S2. Cap plot based on factor season and plots based on prey groups with the highest contribution.

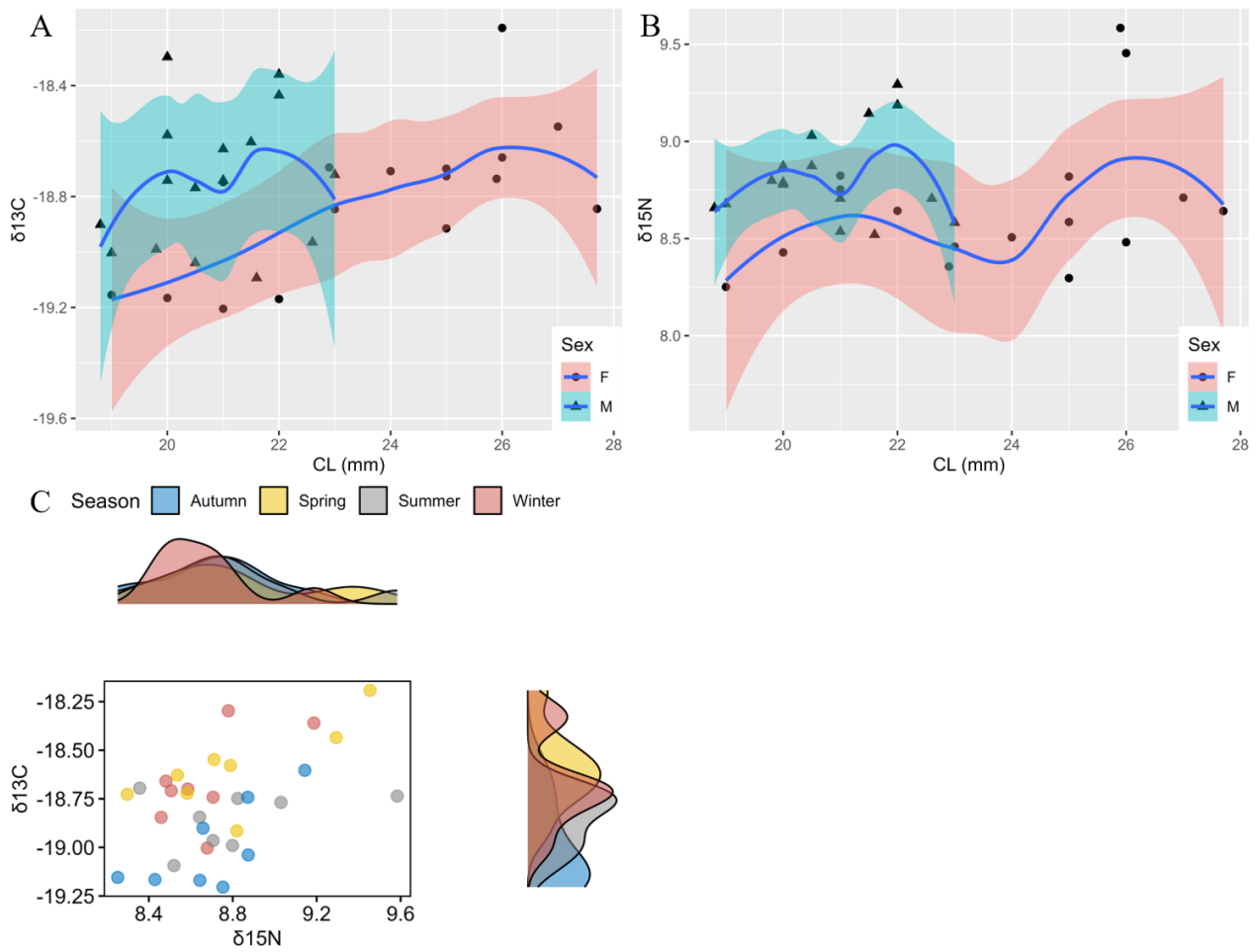


Fig. S3. Trend of $\delta^{13}\text{C}$ (A) and $\delta^{15}\text{N}$ (B) values in relation to size (CL, in mm) by sex and scatterplot of stable isotope values per season with representation of the isotopes contribution (C).

Table S1. Similarity percentage a) and dissimilarity percentage b) of different prey by season, cut off for low contributions: 70%. Av. Abund: Average Abundance; Av. Sim: Average Similarity; Contrib: Contribution; Cum: Cumulative; Av. Diss: Average Dissimilarity.

a) Group Winter		Average Similarity: 25.31		
Species	Av. Abund	Av. Sim	Contrib %	Cum %
Bivalvia	0.23	15.71	62.96	62.06
Caridea	0.12	3.21	12.68	74.74
Gasteropoda	0.06	1.27	5.01	79.75
Foraminifera	0.06	1.22	4.81	84.56
Group Spring		Average Similarity: 19.23		
Bivalvia	0.17	9.19	47.76	47.76
Caridea	0.14	5.13	26.70	74.46
Gasteropoda	0.08	1.40	7.20	81.75
Group Summer		Average Similarity: 19.21		
Bivalvia	0.18	13.1	68.16	68.16
Caridea	0.06	1.53	7.98	76.15
Gasteropoda	0.05	1.04	5.41	81.56
Group Autumn		Average Similarity: 39.98		
Bivalvia	0.34	28.99	72.52	72.52
Gasteropoda	0.1	2.78	6.96	79.48
Foraminifera	0.08	2.27	5.68	85.16

b) Group: Winter and Spring		Average dissimilarity: 77.81			
Species	Av. Abund Winter	Av. Abund Spring	Av. Diss	Contrib %	Cum. %
Bivalvia	0.23	0.17	14.11	18.14	18.14
Caridea	0.12	0.14	11.61	14.92	33.06
Gasteropoda	0.06	0.08	7.15	9.19	42.25
Peracarida	0.05	0.08	6.74	8.66	50.92
Penaeidae	0.06	0.05	6.52	8.38	59.30
Polychaete	0.05	0.05	5.57	7.15	66.45
Cephalopoda	0.05	0.03	5.12	6.58	73.03
Foraminifera	0.06	0.03	4.61	5.93	78.95
Plant debris	0.04	0.04	3.88	4.99	83.94
Group: Spring and Summer		Average dissimilarity: 81.01			
Bivalvia	0.17	0.18	16.13	19.91	19.91
Caridea	0.14	0.06	11.88	14.67	34.57
Gasteropoda	0.08	0.05	7.74	9.55	44.12
Peracarida	0.08	0.04	7.12	8.79	52.91
Penaeidae	0.05	0.02	5.50	6.79	59.70
Polychaete	0.05	0.04	5.33	6.58	66.27
Osteichthyes	0.02	0.03	4.88	6.03	72.30
Foraminifera	0.03	0.05	4.49	5.55	77.85

Cephalopoda	0.03	0.03	4.43	5.47	83.32
Group: Summer and Autumn		Average dissimilarity: 72.32			
Bivalvia	0.18	0.34	15.38	22.27	21.27
Gasteropoda	0.05	0.10	8.18	11.31	32.57
Caridea	0.06	0.09	8.00	11.06	43.64
Peracarida	0.04	0.09	6.76	9.35	52.98
Foraminifera	0.05	0.08	6.52	9.02	62.00
Osteichthyes	0.03	0.05	5.26	7.28	69.28
Polychaete	0.04	0.05	4.76	6.58	75.87
Plant debris	0.03	0.03	3.13	4.33	80.19
Group: Winter and Autumn		Average dissimilarity: 68.78			
Bivalvia	0.23	0.34	11.26	16.38	16.38
Caridea	0.12	0.09	8.85	12.86	29.24
Gasteropoda	0.06	0.10	7.33	10.65	39.89
Peracarida	0.05	0.09	6.27	9.11	49.00
Foraminifera	0.06	0.08	6.09	8.85	57.86
Polychaete	0.05	0.05	5.04	7.32	65.18
Penaeidae	0.06	0.03	4.62	6.71	71.89
Cephaloda	0.05	0.02	3.90	5.68	77.57
Brachyura	0.05	0.02	3.35	4.87	82.43