

Supplementary materials

Table S1: Deployment information for retrieved loggers

Bird ID	Deployment location	Logger type	Date deployment	Date last loc
208324	Crozet	Argos tag	2021-04-13	2021-09-08
208325	Crozet	Argos tag	2021-04-13	2021-09-08
208326	Crozet	Argos tag	2021-04-13	2021-09-08
208327	Crozet	Argos tag	2021-04-13	2021-09-08
208328	Crozet	Argos tag	2021-04-13	2021-09-08
208329	Crozet	Argos tag	2021-04-13	2021-09-08
208330	Crozet	Argos tag	2021-04-13	2021-09-08
229166	Kerguelen	Argos tag	2022-04-27	2022-09-12
229168	Kerguelen	Argos tag	2022-04-21	2022-08-16
BZ378	Kerguelen	GLS	2022-04-30	2022-08-07
BZ380	Kerguelen	GLS	2022-04-29	2022-09-14
BZ383	Kerguelen	GLS	2022-04-27	2022-11-19
BZ384	Kerguelen	GLS	2022-04-30	2022-10-06

Table S2: Results of models comparing latitude and SST between colonies

Model name	Response variable	Colony effect (Kerguelen over Crozet)	Random effect (Individuals)
LMM 1	Latitude	0.41± 0.001° lat P < 0.001	SD = 1.25 Residual = 0.63
LMM 2	SST	2.84±1.01 °C p = 0.02	SD = 1.81 Residual = 1.44

Figure S1: Surface chlorophyll concentration, averaged from 01/11/20 to 31/01/21, from Copernicus GlobColour L4 multisatellite product

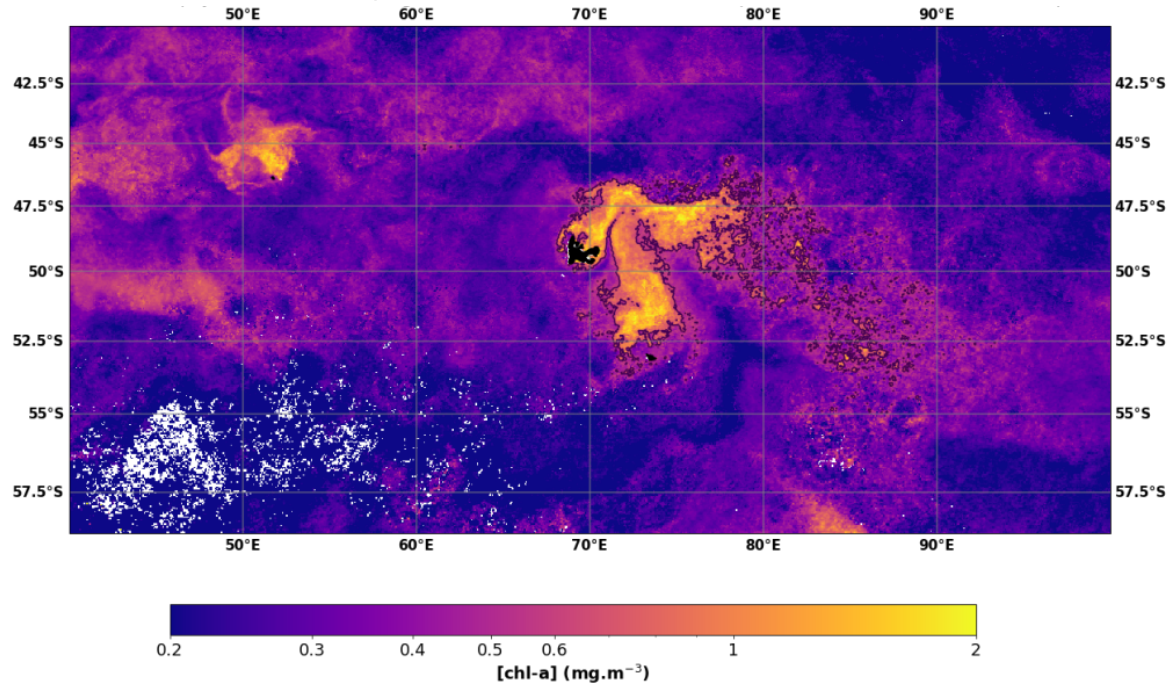


Figure S2: Surface chlorophyll concentration, averaged from 01/11/21 to 31/01/22, from Copernicus GlobColour L4 multisatellite product

