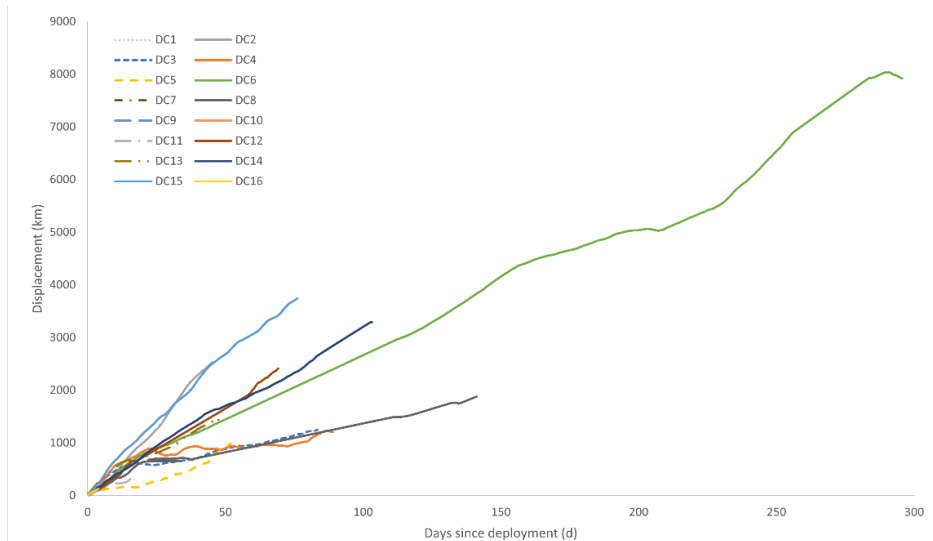


**Table S1:** Number of days and percent of days leatherbacks spent in different maritime zones and within the gillnet fishery minimum convex polygon (MCP). Pe = Peru, Ec = Ecuador, Co = Colombia, FrP = French Polynesia.

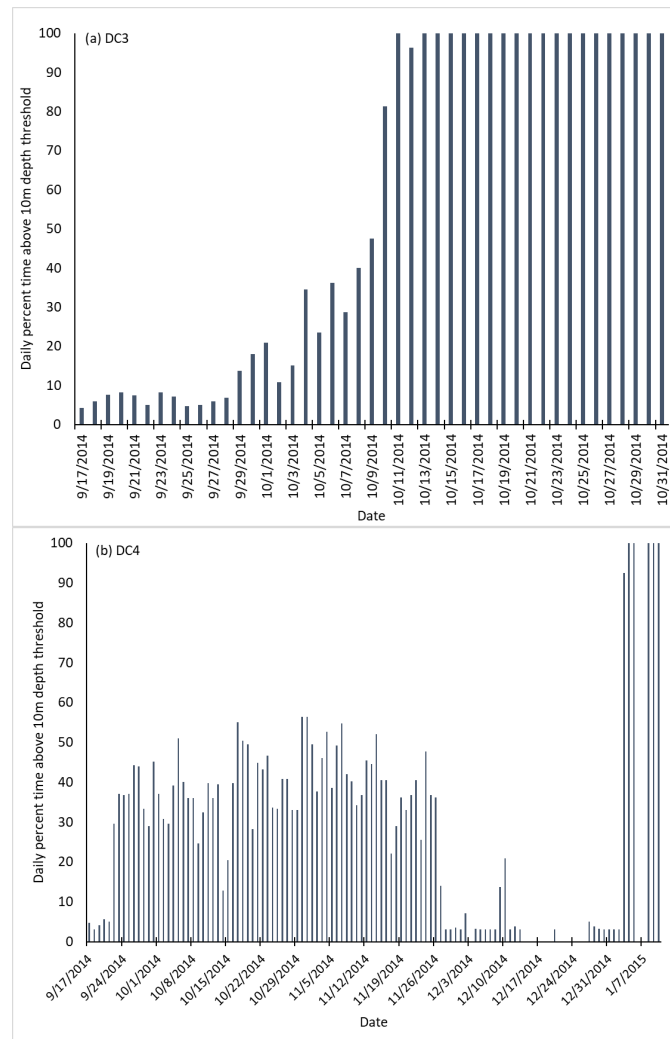
Animal ID	Days (n)						Fishing MCP	Days (%)					
	Pe	Ec	Co	FrP	High seas	Sum		Pe	Ec	Co	FrP	High seas	Fishing MCP
DC1	6	0	0	0	0	6	6	100	0	0	0	0	100
DC2	12	13	0	0	22	47	7	26	28	0	0	47	14.9
DC3	10	0	0	0	75	85	4	12	0	0	0	88	4.7
DC4	12	37	26	0	13	88	4	14	42	30	0	15	3.7
DC5	39	4	0	0	9	52	7	75	8	0	0	17	13.0
DC6	11	0	0	8	253	272	7	4	0	0	3	93	2.4
DC7	4	0	0	0	0	4	3	100	0	0	0	0	75.0
DC8	16	0	0	0	130	146	11	11	0	0	0	89	7.5
DC9	5	0	0	0	0	5	5	100	0	0	0	0	100
DC10	3	0	0	0	0	3	3	100	0	0	0	0	100
DC11	19	0	0	0	0	19	3	100	0	0	0	0	16.7
DC12	15	0	0	0	19	34	7	44	0	0	0	56	9.9
DC13	9	0	0	0	42	51	4	18	0	0	0	82	7.8
DC14	11	0	0	0	93	104	7	11	0	0	0	89	6.7
DC15	8	11	0	0	59	78	2	10	14	0	0	76	2.6
DC16	5	0	0	0	0	5	5	100	0	0	0	0	100

**Table S2.** Summary statistics of battery voltage levels of all platform transmitter terminals deployed, showing no evidence of battery exhaustion as a cause of end of transmissions.

Animal ID	Avg	Min	Max	Start	Final	n
DC1	3.365	3.312	3.376	3.376	3.312	6
DC2	3.261	3.248	3.312	3.248	3.312	20
DC3	3.310	2.864	3.952	3.312	3.248	62
DC4	3.343	2.928	3.568	3.376	3.120	50
DC5	3.339	2.896	3.760	3.392	3.440	1571
DC6	3.376	2.544	3.744	3.520	3.456	7283
DC7	3.312	3.312	3.312	3.312	3.312	1
DC8	3.248	2.992	3.312	3.312	3.248	8
DC9	3.248	3.248	3.248	3.248	3.248	4
DC10	3.269	3.248	3.312	3.248	3.312	3
DC11	3.333	3.104	3.504	3.504	3.456	392
DC12	3.290	2.912	3.792	3.520	3.376	719
DC13	3.319	2.608	3.744	3.440	3.424	1100
DC14	3.292	3.184	3.632	3.504	3.248	25
DC15	3.243	3.184	3.376	3.376	3.184	25
DC16	3.248	3.248	3.248	3.248	3.248	1



**Figure S1.** Daily displacements in kilometers of tracked leatherbacks over the course of their transmission.



**Figure S2.** Daily time percentage above the programmed 10 m threshold for turtles (a) DC3 and (b) DC4. The change to 100% time above 10m at the end of each track suggests turtle injury or mortality (DC4 was possibly fishery bycatch).