

Figure S1. Major injuries found on Oceanic manta rays in Bahía de Banderas and Revillagigedo archipelago. A) Cephalic amputation. B) Pectoral amputation. C) Cephalic dysfunction. D) Severe lacerations. E) Large bites. F) Other major injuries (i.e. Individuals dragging or entangled in objects, such as nets, buoys, or fishing lines, may pose a serious risk to their future health and survival).

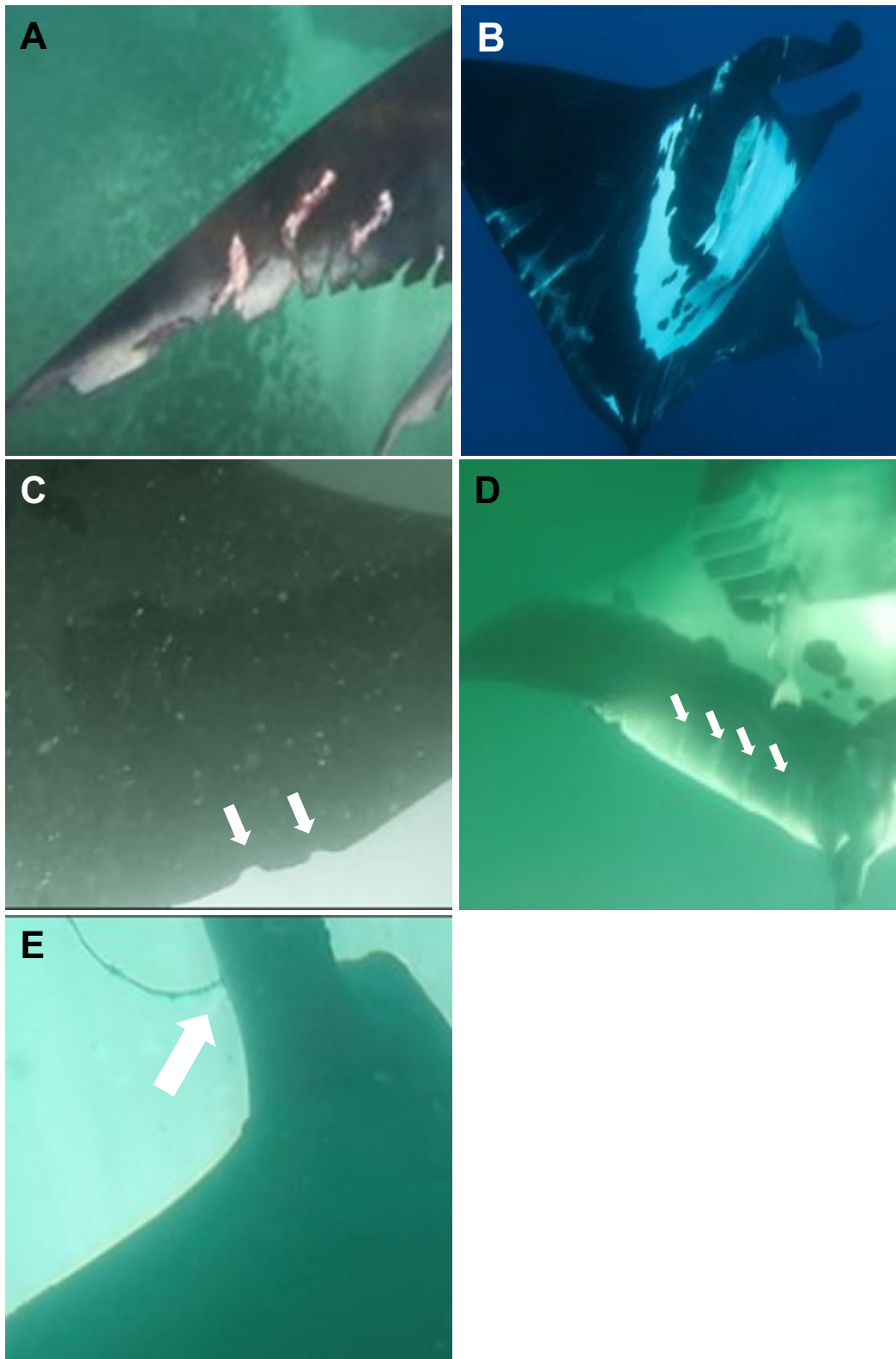


Figure S2. Minor injuries found on Oceanic manta rays in Bahía de Banderas and Revillagigedo archipelago. A) Small lacerations. B) Abrasions. C) Notches. D) Healed major injury (i.e. Severe wounds that have healed, leaving significant scarring without deformity or limitations in movement or function). E) Other minor injuries (i.e. Individuals dragging fishing gear without posing a danger to themselves or their body, such as hooks with short fishing lines that do not risk amputation or lacerations)